

ACCESSORIES 2019

GIVI®

EXPLORE. ENJOY.



HARD BAGS

MONOLOCK® SYSTEM

Monolock®, a patented fitting system, designed for top cases with smaller capacity and usually used on scooter and small motorcycle. Even with limitations of maximum load, this system guarantees ease of use together with a high reliability and durability with components boasting lighter and far smaller dimensional restrictions. Because of its natural compatibility with different kind of motorcycles, it is appreciated by the most important brands of motorcycles producers.

MONOKEY® SYSTEM

Patented by GIVI, Monokey® Side represents an interesting evolution of the classic system constituted by the "fitment Kit plus the side-bag". The new solution introduces new advanced technical features and some other points of interest: the cases that adapt Monokey® Side can be recognized by the shaped profile of the bottom and by the addition of two new fixing points, composed by "sleds". The latter receive the disengagement movement from the case release button and determine a significant and further increase in overall stability. Monokey® Side allows greater adhesion of the case to the side of the motorcycle, improving the aerodynamic aspect. The motorcyclist's habits won't change, since it will continue to open/close and attach/detach the case equipped with Monokey® Side with one key and push button.

FIXED® SYSTEM

Underbone street bike is the most common motorcycle type widely used in many Asian cities. Basic, yet slim rack system mounted on the motorcycle - great for everyday ride in heavy traffic congestion. Its compact locking and racking system combination - better fit the size and weight of the underbone street bike.

MONOLOCK® TOP CASES

GIVI

EXPLORE. ENJOY.

E450 SIMPLY II



45ltr. top case, black.

E43 MULEBOX



43ltr. top case, black.

B360



36ltr. top case, black.

E350R FLOW II



35ltr. top case, black.

E350 FLOW



35ltr. top case, black.

E340 VISION



34ltr. top case, black.

B34



34ltr. top case, black.

E33 POINT



33ltr. top case, black.

B32 BOLD



32ltr. top case, black.



E30R TOUR II



30ltr. top case, black.

E30T TOUR



30ltr. top case, black.

B27 CLACK



27ltr. top case, black.

B270



27ltr. top case, black.



MONOLOCK® TOP CASES

E250 WILDCAT



25ltr. top case, black.

MONOKEY® SIDE CASES

E22



Pair of black panniers, 22ltr.

E23



Pair of black & colour panniers, 23ltr.



FIXED SYSTEM

G10N



10ltr. Centre Case, black.

G12N



12ltr. Centre Case, black.



E450 SIMPLY II

E450N



E450NT



INFO



OPTIONAL



S450

Conversion kit
E450N-S



E95M

Universal Backrest



DESCRIPTION

E450N | 45ltr. Monolock® Topcase Black

E450NT | 45ltr. Monolock® Topcase Black with Clear Reflector

E43NTL-ADV



* ACCESSORIES

ELASTIC CARRYING NET



SPECIFIC BACKREST



INNER PADDING



**Inclusive of all accessories for Advance Series.*

INFO



DESCRIPTION

E43NTL-ADV | 43ltr. Monolock® Topcase Black Advance (Tech)



Accessories are also available as optional. For more information, please refer to page 8.

E43NTL



INFO



OPTIONAL



NE43N

Elastic Carrying Net for E43N



PE43N

FLEXISHELL Inner Padding for E43N



BE43N

Specific Backrest E43N

DESCRIPTION

E43NTL | 43ltr. Monolock® Topcase Black

B360N



B360NT



INFO



OPTIONAL



C360

Paintable cover

DESCRIPTION

B360N | 36ltr. Monolock® Topcase Black with Red Reflector**B360NT** | 36ltr. Monolock® Topcase Black with Clear Reflector

E350RN



INFO



OPTIONAL



S30R

Conversion kit
E350RN-S3 &
E30RN-S3



E95M

Universal Backrest

DESCRIPTION

E350RN | 35ltr. Monolock® Topcase Black



E350N



E350NT



INFO



OPTIONAL



S350

Conversion kit
E30TN-S, E33N-S,
E350N-S & E370N-S



E95M

Universal Backrest

DESCRIPTION

E350N | 35ltr. Monolock® Topcase Black with Red Reflector

E350NT | 35ltr. Monolock® Topcase Black with Clear Reflector



E340N



INFO



DESCRIPTION

E340N | 34ltr. Monolock® Topcase Black



B34N



B34NT



INFO



DESCRIPTION

- B34N** | 34ltr. Monolock® Topcase Black
- B34NT** | 34ltr. Monolock® Topcase Tech Black



E33N



INFO

MAX LOAD
3kg
MINUS
5kg
HRAHROX

VOLUME
33lt

SIZES
298
405
468

CAPACITY
[Icon of a helmet]

TECHNOLOGY
[Icon of a lock mechanism]
MONOLOCK SYSTEM™

OPTIONAL



S350

Conversion kit
E30TN-S, E33N-S,
E350N-S & E370N-S



E95M

Universal Backrest

DESCRIPTION

E33N | 33ltr. Monolock® Topcase Black



MONOLOCK®

B32 BOLD

ADVANCE SERIES

GIVI®

EXPLORE. ENJOY.

+ NEW

B32N-ADV



* ACCESSORIES

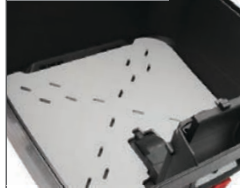
ELASTIC CARRYING NET



SPECIFIC BACKREST



INNER PADDING



**Inclusive of all accessories for Advance Series.*

INFO



DESCRIPTION

B32N-ADV | 32ltr. Monolock® Topcase Black Advance



B32N



INFO



OPTIONAL



NB32N

Elastic Carrying Net
for B32N



PB32N

Inner Padding
for B32N



BB32N

Specific Backrest
B32N

DESCRIPTION

B32N | 32ltr. Monolock® Topcase Black



E30RN



INFO



OPTIONAL



S30R

Conversion kit
E350RN-S3 &
E30RN-S3

E88M

Universal Backrest

DESCRIPTION

E30RN | 30ltr. Monolock® Topcase Black



E30TN



INFO



OPTIONAL



S30R

Conversion kit
E350RN-S3 &
E30RN-S3



E88M

Universal Backrest

DESCRIPTION

E30TN | 30ltr. Monolock® Topcase Black



B27N



B27NT



INFO



OPTIONAL



S27
Conversion kit B27
with reflector for
B27N-S

DESCRIPTION

B27N | 27ltr. Monolock® Topcase Black

B27NT | 27ltr. Monolock® Topcase Tech without Light



MONOLOCK®

B270



B270N



INFO

MAX LOAD
3kg
MINUS
5kg
HRAHROZ

VOLUME
27 lt

SIZES
289
1008
393

CAPACITY

TECHNOLOGY
MONOLOCK SYSTEM

DESCRIPTION

B270N | 27ltr. Monolock® Topcase Black



E250N



E250N2



INFO



OPTIONAL



S250

Conversion kit E250

DESCRIPTION

- E250N** | 25ltr. Monolock® Topcase Black with Red Reflector
- E250N2** | 25ltr. Monolock® Topcase Black with Smoke Reflector



E22N



E22N-S_OR



INFO

MAX LOAD
5 kg

VOLUME
22lt

SIZES
370
125
470

TECHNOLOGY
MONOKEY SYSTEM

DESCRIPTION

- E22N** | 22ltr. Monokey® LH & RH Panniers Black
- E22N-S_OR** | 22ltr. Monokey® LH & RH Panniers Black with LED Light and Orange Reflector





E23N-S_OR



E23G730-S_OR



INFO

| | | | |
|-------------------------|-----------------------|--|---|
| MAX LOAD 5 kg | VOLUME 23lt | SIZES  | TECHNOLOGY  |
|-------------------------|-----------------------|--|---|

*STANDARD PRODUCT HAS COME WITH SIGNAL LIGHTS

DESCRIPTION

| | |
|---------------------|---|
| E23N-S_OR | 23ltr. Monokey® LH & RH Side Case Black With Light and Orange Reflector |
| E23G730-S_OR | 23ltr. Monokey® LH & RH Side Case Metallic Silver with Light and Orange Reflector |



G10N



INFO

| | | | | |
|-------------------------|-----------------------|--|---|---|
| MAX LOAD 2 kg | VOLUME 10lt | SIZES  | CAPACITY  RAINSUIT | TECHNOLOGY  |
|-------------------------|-----------------------|--|---|---|

DESCRIPTION

G10N | 10 ltr. Fixed System® Centre Case Black



FIXED SYSTEM®

G12N

GIVI

EXPLORE. ENJOY.



G12N



INFO

MAX LOAD

2 kg

VOLUME

12 lt

SIZES



CAPACITY



RAINSUIT

TECHNOLOGY



DESCRIPTION

G12N | 12ltr. Fixed System® Center Case Black



TANKLOCK



XSTREAM RANGE

Sporty look from the express line for those who are not willing to compromise in terms of reliability and comfort. All materials will be developed in accordance with the new Reach regulations except the main fabric of the new Xstream products which will be treated anti-UV.



SPORT-T RANGE

A line of semi-rigid bags designed for "quick-tourism". Developed to obtain compact volumes and shapes with sports lines. The Sport-T range is particularly suitable for road and sport-touring bikes, with medium to medium/small volumes and technical fabrics laminated and with a reinforced structure (water-resistant, with UV protection). Tanklock and Easylock systems patented by GIVI adds further practicality of use, making the fitting/release system fast and secure.



TANKLOCK

XS307_XSTREAM RANGE

WATCH THE VIDEO!



GIVI

EXPLORE. ENJOY.



DAMPNESS
PROTECTION



CABLE PORT

*Tanklock expandable tank bag with
removable tablet-holder, 15ltr;
To match with motorcycle specific
mounting ring (BF_ _)*

INFO





"Mini" Tanklock bag, 3ltr;
To match with motorcycle specific
mounting ring (BF_ _)

INFO





rain cover



inner pocket



protection



Smartphone holder protection, removable,
with a small pocket for cards

TANKLOCK tank bag, 4ltr;
To match with motorcycle specific
mounting ring (BF_ _)

INFO



VOLUME

4lt

TANKLOCK



MAX LOAD

2 kg

READY TO



POWER HUB

RAIN COVER



ANATOMIC GRIP



REFLECTIVE



READY TO PADLOCK



INNER POCKET



SHOULDER STRAP



SMARTPHONE HOLDER



SOFT BAGS

Over the years GIVI has improved and increased enormously in motorcycle field, more and more appreciated by the biker, by creating bags of new shapes and sizes, sometimes detachable bag; that can be mounted on the bike or directly worn by the biker.

They are divided according to several aspects:

Prime Range - Bringing the riding experience further and beyond. Simply the best solution for accomplished riders.

Comfort Range - Smart and technical gears; the most comprehensive range in terms of quality and passion.

Rider Tech Range - Practical, user friendly. A wide range that suits the daily needs of riders

PRIME RANGE

PCB01



PRIME Cargo Bag 40ltr.

PBP01



PRIME Backpack 30ltr.

PTB01



PRIME Tank Bag 15ltr.

PWB01



PRIME Waist Bag 2ltr.

GIVI

EXPLORE. ENJOY.

PWB02



PRIME Waist Bag 4ltr.

COMFORT RANGE

CTB01



COMFORT Tank Bag 18ltr.

CBP02



COMFORT Backpack 17ltr.

EASY-T RANGE

EA101B



EASY-T Saddle Bag 40ltr.

EA124



EASY-T Rucksack 15ltr.

RTB01



RIDER TECH Tank bag 20ltr.

RSB01



RIDER TECH Saddle Bag 15ltr.

RBP01



RIDER TECH Backpack 15ltr.

RBP02



RIDER TECH Backpack 15ltr.

RBP03



RIDER TECH CAMO Backpack 15ltr.

RWB01



RIDER TECH Waist Bag 2ltr.

RWB02



RIDER TECH Waist Bag 4ltr.

RWB04



RIDER TECH Waist Bag 3ltr.

RWB05



RIDER TECH CAMO Waist Bag 3ltr.

RLP01



RIDER TECH Leg Pouch 1ltr.

EXTRA CARGO RANGE

T516



Universal Handlebar Bag



PRIME Cargo Bag 40ltr;
100% Waterproof, Tarpaulin

INFO





REAR VIEW



*PRIME Backpack 30Ltr;
100% Waterproof, Tarpaulin*

INFO





PRIME Tank Bag 15ltr;
100% Waterproof, Tarpaulin

INFO





PRIME Waist bag 2ltr;
100% Waterproof, Tarpaulin

INFO



KEY HOOK



PRIME Waist bag 4ltr;
100% Waterproof, Tarpaulin

INFO





DETACHABLE



RAIN COVER



COMFORT Tank Bag 18ltr;
100% Polyester

RUCKSACK



INFO





DETAILS



FLAT OPENING COMPARTMENT



RAINCOVER



COMFORT Backpack 17ltr;
100% Polyester

INFO





Pair of small expandable saddle bags, 30 lt

RAIN COVER



SHOULDER STRAP



POCKET

INFO



VOLUME
30lt



DETAILS





SUNGLASSES POCKET



RAIN COVER

RUCKSACK 15ltr;
100% Polyester

INFO



VOLUMES
15lt





RIDER TECH Tank Bag 20ltr;
100% Polyester



INFO

| | | | | | | | | |
|--------------|----------------------------|-----------------------|-------------------|------------------|-------------------|-------------------|---------------------|-------------------|
| <p>SIZES</p> | <p>VOLUMES</p> <p>20lt</p> | <p>SHOULDER STRAP</p> | <p>REFLECTIVE</p> | <p>4 MAGNETS</p> | <p>RAIN COVER</p> | <p>EXPANDABLE</p> | <p>INNER POCKET</p> | <p>MAP HOLDER</p> |
|--------------|----------------------------|-----------------------|-------------------|------------------|-------------------|-------------------|---------------------|-------------------|





EXPANDABLE COMPARTMENT



SHOULDER STRAP



RIDER TECH Saddle Bag 15ltr;
100% Polyester

INFO



VOLUMES
15lt





RAIN COVER



RIDER TECH Backpack 15ltr;
100% Polyester

INFO





DRAINAGE SYSTEM



WET COMPARTMENT



RIDER TECH Backpack 15ltr;
100% Polyester

INFO



VOLUMES
15lt





RIDER TECH CAMO Backpack 15ltr;
100% Polyester

MULTI POCKET



INFO





RAINCOVER



RIDER TECH Waist Bag 2ltr;
100% Polyester

INFO



VOLUMES
2 lt



RAINCOVER



RIDER TECH Waist Bag 4ltr;
100% Polyester

INFO



VOLUMES
4 lt





RIDER TECH Leg Pouch 3ltr;
100% Polyester

INFO



RIDER TECH CAMO Waist Bag 3ltr;
100% Polyester

INFO





RAIN COVER



RIDER TECH Leg Pouch 1ltr;
100% Polyester

INFO



EXTRA CARGO RANGE

T516



INNER POCKET



MOUNTED



Universal handlebar pouch with
internal mobile phone compartment.

INFO



SAFETY AND COMFORT

During these years, GIVI Safety and Comfort Range prepared motorcyclists a range of products that most needed in tropical Asian countries, from waterproof garments to security accessories. The range keeps you dry and safe when riding in any weather conditions, sunny or dark and stormy weather, as well as to protect your motorcycle from thieves and bad weather when not riding - for your added peace of mind!





WATERPROOF GARMENT

PRS01.AX



PRIME Rain Suit

PRS04.AX



PRIME Rain Suit

CRS01.AX



COMFORT Rain Suit

CRS02.AX



COMFORT Rain Suit

RRS04.AX



RIDER TECH Rain Suit

RRS07.AX



RIDER TECH Rain Suit

CAM 01.AH



RIDER TECH Rain Suit

CRT01.AX-N



Rain Trousers

SC02



Shoe Cover

RIDING MASK

PLM01



Protective Layer Mask

BIKE COVER

S202



Bike Cover

BASE PLATE STOP LIGHT KIT

SLMP70NS



MP70N Stoplight Kit

SLMP60NS



MP60N Stoplight Kit

SLM5MNS



M5M Stoplight Kit

GIVI

EXPLORE. ENJOY.

SECURITY LOCK

TL8X



U-lock

TL9



Disc Lock

TL11



Brake Lever Lock

TL12



Brake Lever Lock

TL13



Armour Cup

TL14



Cable Lock

TL15



Mini U-Lock

RACKING SYSTEM

MX



Monorack Extreme Rack

MV



Monorack Advance Rack

SRV



Special Advance Rack

HRX



Heavyduty Extreme Rack

HRV



Heavyduty Advance Rack

SBL



Side Bag Holder

SBX



Side Bag Holder

CR



Center Case Fitting Kits

WATERPROOF GARMENT

PRS01.AX_PRIME



COLOUR RANGE



PRS01.AX-Y
PRIME Rain Suit;
Neon Yellow

FEATURES



INFO



SIZE

| S | M | L | XL | 2XL | 3XL | 4XL | 5XL | 6XL |

| | |
|----------------------|--|
| MATERIAL | : Ripstop Nylon 210T PU Black & Nylon 190T PU |
| WATERPROOFNESS | : 8000mm water column |
| POCKET | : Three (3) |
| FOLDAWAY HOOD | : Yes |
| AIR VENT AT THE BACK | : Yes |
| OTHERS | : - High visibility; neon yellow fabrics - Fit adjustment straps (velcro) on waist, sleeves and legs. |

WATERPROOF GARMENT

PRS04.AX_PRIME



COLOUR RANGE



PR04.AX-NY
PRIME Rain Suit;
Black Yellow



PR04.AX-NN
PRIME Rain Suit;
Black

FEATURES



INFO



SIZE

| S | M | L | XL | 2XL | 3XL | 4XL | 5XL | 6XL |

| | |
|----------------------|--|
| MATERIAL | : Poly 150D PU. |
| WATERPROOFNESS | : 8000mm water column |
| POCKET | : Three (3) |
| FOLDAWAY HOOD | : Yes |
| AIR VENT AT THE BACK | : No |
| OTHERS | : - High visibility; neon yellow fabrics - Uniform black trousers for both colours - Elastic band on waist at the back - Fit adjustment straps (velcro) on waist, sleeves and legs. |

WATERPROOF GARMENT

CRS01.AX_COMFORT



COLOUR RANGE



CR501.AX-GY
COMFORT Rain Suit;
Grey Yellow



CR501.AX-NY
COMFORT Rain Suit;
Black Yellow

FEATURES



INFO



SIZE

| S | M | L | XL | 2XL | 3XL | 4XL | 5XL | 6XL |

| | |
|----------------------|---|
| MATERIAL | : Nylon 190T PVC |
| WATERPROOFNESS | : 5000mm water column |
| POCKET | : Two (2) |
| FOLDAWAY HOOD | : No |
| AIR VENT AT THE BACK | : Yes |
| OTHERS | : - Small high visibility (neon yellow) inserts - Uniform black trousers for both colours - Elastic band on waist at the back - Fit adjustment straps (Velcro) on legs |

WATERPROOF GARMENT

CRS02.AX_COMFORT



COLOUR RANGE



CRS02.AX-Y
COMFORT Rain Suit;
Hi-Vis Yellow

FEATURES



INFO



SIZE

| S | M | L | XL | 2XL | 3XL | 4XL | 5XL | 6XL |

| | |
|----------------------|--|
| MATERIAL | : Ripstop Nylon 210T PU Black & Nylon 190T PU |
| WATERPROOFNESS | : 8000mm water column |
| POCKET | : One (1) |
| FOLDAWAY HOOD | : No |
| AIR VENT AT THE BACK | : Yes |
| OTHERS | : Fit adjustment straps (Velcro) on waist, sleeves and legs; and elastic cord on hips |

WATERPROOF GARMENT

RRS04.AX_RIDER TECH



COLOUR RANGE



RRS04.AX-B
RIDER TECH Rain Suit;
Blue



RRS04.AX-N
RIDER TECH Rain Suit;
Black



RRS04.AX-R
RIDER TECH Rain Suit;
Red

FEATURES



INFO



SIZE

| S | M | L | XL | 2XL | 3XL |

| | |
|----------------------|--|
| MATERIAL | : Poly 190T PVC |
| WATERPROOFNESS | : 3000mm water column |
| POCKET | : One |
| FOLDAWAY HOOD | : No |
| AIR VENT AT THE BACK | : Yes |
| OTHERS | : - Fit adjustment straps (Velcro) on waist, sleeves and legs; and elastic cord on hips |

WATERPROOF GARMENT

RRS07.AX_RIDER TECH



COLOUR RANGE



RRS07.AX-NG
RIDER TECH Rain Suit;
Black Grey

FEATURES



INFO



SIZE

| S | M | L | XL | 2XL | 3XL |

| | |
|----------------------|---|
| MATERIAL | : Nylon 190T PVC |
| WATERPROOFNESS | : 5000mm water column |
| POCKET | : No |
| FOLDAWAY HOOD | : No |
| AIR VENT AT THE BACK | : Yes |
| OTHERS | : - Fit adjustment straps (Velcro) on waist and cuffs |

WATERPROOF GARMENT



CAM 01.AH_RIDER TECH



COLOUR RANGE



CAM01.AH-G
 RIDER TECH Rain Suit;
 Camouflage Grey

FEATURES



INFO



SIZE

| S | M | L | XL | 2XL | 3XL | 4XL | 5XL | 6XL |

- MATERIAL : Poly 190T PVC
- WATERPROOFNESS : 3000mm water column
- POCKET : One (1)
- FOLDAWAY HOOD : Yes
- AIR VENT AT THE BACK : Yes
- OTHERS : - Fit adjustment straps (Velcro) on waist, arms and legs and elastic cord on hips

COMFORT RANGE

CRT01.AX-N



COMFORT RANGE
Trousers Black

INFO



VELCRO ON LEGS



REFLECTIVE STRIPES



WATERPROOF GARMENT

SC02

SC02-N



Shoe cover;
100% Polyester

INFO



INFO

| L | XL | 2XL | 3XL |

ANTI SLIP SOLE



REFLECTIVE INSERTS





*Protective Layer Mask Black,
Neoprene*

INFO



VELCRO STRAP



STRETCHABLE

ADDITIONAL
FILTER

REMOVABLE FILTER



ANTI-LEAK FLAP



S202L

Motorcycle water resistant rain-covering for sport and scooter models. Recommended for lower cc scooters, naked, sport, classic. h. 125>100 x l. 205 x w. 70>95

S202XL

Motorcycle water resistant rain-covering for big motorcycles and scooters. Recommended for maxiscooter, spor-tourer, tourer, enduro, custom. h. 125>110 x l. 238 x w. 70>95

SLMP70NS



SLMP60NS



SLM5MNS



Stop light will be on static mode when the bike is moving and there is no usage of brake. It will blink if there is a usage of brake.

SECURITY LOCK

TL8X



U-lock
U-hook size
dia. 12 mm x 108 mm width x
196 mm long

SECURITY LOCK

TL9



Disc Lock
80 mm x 12 mm

SECURITY LOCK

TL11



Brake Lever Lock
Throttle dia. 34 mm x 35 mm width
144 mm long x 52 mm height

SECURITY LOCK

TL12



Brake Lever Lock
Throttle dia. 34 mm x 42 mm width
147 mm long x 56 mm height

GIVI

EXPLORE. ENJOY.

SECURITY LOCK

TL13



*Armour Cups
20 mm dia. x 1000 mm long.
Steel flexible joint links.*

SECURITY LOCK

TL14



*Cable Lock
15 mm dia. x 900 mm long
Thicker twisted wire resist
destruction.*

SECURITY LOCK

TL15



*Mini U-Lock
U-hook size
dia. 16 mm x 50 mm width x
48mm long*

RACKING SYSTEM

GIVI

EXPLORE. ENJOY.

RACKING SYSTEM



MX-_____ MONORACK EXTREME RACK



*Monorack Extreme Rack (Monolock)
for specific models*

RACKING SYSTEM

MV-_____ MONORACK ADVANCE RACK



*Monorack Advance Rack (Monolock)
for specific models*

SRV-_____ SPECIAL ADVANCE RACK



*Special Advance Rack (Monolock)
for specific models*

HRX-_____ HEAVYDUTY EXTREME RACK



*Heavyduty Extreme Rack (Monolock)
for specific models*

HRV-_____ HEAVYDUTY RACK



*Heavyduty Advance Rack (Monolock)
for specific models*

SBL-_____ SIDE BAG HOLDER

Side Bag Holder (Monokey) for specific models

PLX-_____ SIDE BAG HOLDER

Side Bag Holder (V35) for specific models

CR-_____ CENTER CASE FITTING KITS

Center Case Fitting Kits for specific models



HELMETS



OFF ROAD

Off-road helmet has clearly elongated chin and visor portions, a chin bar, and partially open face to give the rider extra protection while wearing goggles and to allow the unhindered flow of air during the physical exertion typical of this type of riding. The visor allows the rider to dip his or her head and provide further protection from flying debris during off road riding. It also serves the obvious purpose of shielding the wearer's eyes from the sun.



MODULAR

The latest generation of helmets by GIVI, often with double homologation and configured to convert from a Full-Face to a Jet helmet courtesy of the removable chin-guard.

Incorporated within the Modular range is the classic opening style of helmet which nowadays is the preferred choice for many motorcycles, due to the chin-guard which can be lifted, providing an easier and faster fit. GIVI was the pioneer of this articulated category of helmet, being the first company to introduce models with truly unique features. The prominence of the GIVI brand within this particular product range is reflected by the extensive range featured in the catalogue.



FULL FACE

The top of GIVI helmets range, produced with understanding of advanced plastic technology and the use of high level materials, is the ideal choice for motorcycle sport and motor-touring.



JET

The interchangeable cheek pads for protection and comfort will soon change the mind of those who think that helmets has no more to offer from the conceptual point of view. With this GIVI adds a fresh and important turn to the current panorama offered by the mondial market - the Jet - unique of its kind!

OFF-ROAD

M60.0 SKID

M60.0 SKID



GRAPHIC LINE ICE
WHITE BLACK

M600FIWBK/_



GRAPHIC LINE
NEON YELLOW BLACK

M600FNGBK/_

MODULAR

X.01 TOURER

X.01 TOURER



BLACK FLUO

HX01DBKNY/_



YELLOW FLUO

HX01DNYLL/_

X.16 VOYAGER

X.16 VOYAGER



MATT BLACK

HX16FN900/_



MATT TITANIUM

HX16FG768/_

FULL FACE

40.5 X-CARBON

40.5 X-CARBON



GREY/RED MATT

H405FXCRD/_



NEON YELLOW

H405FXCFY/_

M50.1 VENTO

M50.1 VENTO



GRAPHIC DART
GREY

M501FDTGR/_



GRAPHIC DART
BLACK

M501FDTBK/_



GRAPHIC DART ICE
BLUE

M501FDTBL/_



GRAPHIC TECHNO
ITALY

M501FTCIT/_

FULL FACE

GIVI

EXPLORE. ENJOY.

M50.2 TURISMO

M50.2 TURISMO



GRAPHIC TOURING
TITANIUM

M502FTRTM/_



GRAPHIC TOURING
BLACK

M502FTRBK/_



GRAPHIC TOURING
WHITE

M502FTRWS/_



SOLID WHITE
SMOKE

M502BB912/_

JET

M30.1 CIELO

M30.1 CIELO



GRAPHIC MOD
ICE WHITE



M301FMDIW/_



GRAPHIC MOD
BLACK



M301FMDBK/_



GRAPHIC SLIDE
TITANIUM



M301FSDTM/_



GRAPHIC SPORT
GRAPHITE GREY

M301FSPGG/_



MATT BLACK

M301BN900/_

M30.2 PRESTO

M30.2 PRESTO



GRAPHIC RACING
BLACK

M302FRCBK/_



GRAPHIC RACING
WHITE

M302FRCWH/_



SOLID WHITE

M302BB910/_



MATT BLACK

M302BN900/_

M30.3 D-VISOR

M30.3 D-VISOR



GRAPHIC SPEED
WHITE

M303FSEWH/_



GRAPHIC SPEED
BLACK

M303FSEBK/_



GUN METAL

M303BG801/_



SOLID WHITE

M303BB910/_

M60.0 SKID



M60.0 SKID

COLOR RANGE



EXPLORE. ENJOY.



GRAPHIC LINE
ICE WHITE BLACK
M600FIWBK/



GRAPHIC LINE
NEON YELLOW BLACK
M600FNYBK/

| SIZE | CM |
|------|----|
| S | 56 |
| M | 58 |
| L | 60 |
| XL | 62 |
| XXL | 64 |

WEIGHT
gr.1450±50

SIZE
S > XXL

STC

REMOVABLE

ANALLERGIC

REMOVABLE
GOGGLE

MICROMETRIC

BREATHGUARD

INFO

- WEIGHT : gr.1450±50
- SHELL : 1 size
- MATERIAL : Technopolymer
- INNER LINING : - Removable inner lining
- Removable cheek pads
- Anallergic fabric
- BUCKLE : - Micrometric system
- HOMOLOGATION : ECE-R22-05; Off Road
- VISOR : None
- PEAK : Adjustable
- VENTILATION : - Frontal air ventilation: 3 x upper and 1 x chin guard and 2 x cheek
- 2x rear extractors
- GOGGLE : - Deatchable goggle - CE Certified
- Shock resistance, shatterproff clear lens
- OTHER : - Removable breathguard



OPTIONAL

X.01 TOURER



URBANKIT
Z2246R



X.01 TOURER + URBANKIT

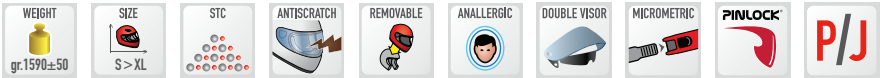
X.01 TOURER
COLOR RANGE

GIVI®

EXPLORE. ENJOY.



| SIZE | CM |
|------|----|
| S | 56 |
| M | 58 |
| L | 60 |
| XL | 61 |



INFO

- WEIGHT : gr.1590±50
- SHELL : 1 size
- MATERIAL : Technopolymer
- INNER LINING : - Removable inner lining
- Removable cheek pads
- Anallergic fabric
- BUCKLE : - Micrometric system
- HOMOLOGATION : ECE-R22-05; Double Homologation P/J
- VISOR : - Anti scratch clear visor
- Small smoked sun visor
- Pinlock® ready (Pinlock® 70 lens not included)
- VENTILATION : - Frontal air ventilation, 2 x upper and 2 x chin guard
- 2 x rear extractors
- OTHER : - Removable chin guard
- Caps for jet version



OPTIONAL

X.16 VOYAGER



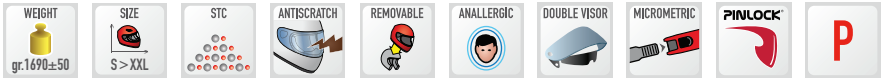
X.16 VOYAGER
COLOR RANGE

GIVI®

EXPLORE. ENJOY.



| SIZE | CM |
|------|----|
| S | 56 |
| M | 58 |
| L | 60 |
| XL | 61 |
| XXL | 63 |



INFO

- WEIGHT : gr.1690±50
- SHELL : 1 size
- MATERIAL : Technopolymer
- INNER LINING : - Removable inner lining
- Removable cheek pads
- Anallergic fabric
- BUCKLE : - Micrometric system
- HOMOLOGATION : ECE-R22-05; Full face
- VISOR : - Anti scratch clear visor
- Quick release
- Small smoked sun visor
- Pinlock® ready (Pinlock® 70 lens not included)
- VENTILATION : - Frontal air ventilation 2 x upper and 1 x chin guard
- 1 x rear extractor
- OTHER : - Openable chin guard - Removable breathguard
- Wind deflector



OPTIONAL

40.5 X-CARBON



40.5 X-CARBON
COLOR RANGE

GIVI®

EXPLORE. ENJOY.



| SIZE | CM |
|------|----|
| M | 58 |
| L | 60 |
| XL | 61 |
| XXL | 63 |



INFO

- WEIGHT : gr.1230±50
- SHELL : 1 size
- MATERIAL : Carbon
- INNER LINING : - Removable inner lining
- Anallergic fabric
- BUCKLE : - Micrometric double “D-ring”
- HOMOLOGATION : ECE-R22-05; Fullface
- VISOR : - Pinlock® ready (Pinlock® 70 lens included)
- Small smoked sun visor
- VENTILATION : - Frontal air ventilation: 2 x upper and 1 x chin guard
- 1 x rear extractor
- OTHER : - Removable breathguard
- Wind deflector



OPTIONAL

M50.1 VENTO



M50.1 VENTO
COLOR RANGE

GIVI®

EXPLORE. ENJOY.



| SIZE | CM |
|------|----|
| S | 56 |
| M | 58 |
| L | 60 |
| XL | 62 |



INFO

- WEIGHT : gr.1450±50
- SHELL : 1 size
- MATERIAL : Technopolymer
- INNER LINING : - Removable inner lining
- Removable cheek pads
- Anallergic fabric
- BUCKLE : - Micrometric system
- HOMOLOGATION : ECE-R22-05; Full Face
- VISOR : - Anti scratch clear visor
- VENTILATION : - Frontal air Ventilation: 2 x upper and 1 x chin guard
- 3 x rear extractors
- OTHER : - Removable Breathguard
- Wind deflector



OPTIONAL

OFF ROAD

MODULAR

FULL FACE

JET

M50.2 TURISMO





| SIZE | CM |
|------|----|
| S | 56 |
| M | 58 |
| L | 60 |
| XL | 62 |
| XXL | 64 |



INFO

- WEIGHT** : gr.1500±50
- SHELL** : 1 size
- MATERIAL** : Technopolymer
- INNER LINING** : - Removable inner lining
- Removable cheek pads
- Anallergic fabric
- BUCKLE** : - Micrometric system
- HOMOLOGATION** : ECE-R22-05; Full Face
- VISOR** : - Anti scratch clear visor
- Small smoked sun visor
- VENTILATION** : - Frontal air Ventilation: 2 x upper front, 1 x chin guard and 2 x cheek
- 2 x rear extractors
- OTHER** : - Removable Breathguard
- Wind deflector



OPTIONAL

M30.1 CIELO



M30.1 CIELO
COLOR RANGE

GIVI®

EXPLORE. ENJOY.



| SIZE | CM |
|------|----|
| S | 56 |
| M | 58 |
| L | 60 |
| XL | 61 |



INFO

- WEIGHT : gr.1200±50
- SHELL : 1 size
- MATERIAL : Technopolymer
- INNER LINING : - Removable inner lining
- Removable cheek pads
- Anallergic fabric
- BUCKLE : - Micrometric system
- HOMOLOGATION : ECE-R22-05; Jet
- VISOR : - Anti scratch clear visor
- VENTILATION : - 2 x upper front
- 1 x rear extractor



OPTIONAL

OFF ROAD

MODULAR

FULL FACE

JET

M30.2 PRESTO



M30.2 PRESTO

COLOR RANGE



EXPLORE. ENJOY.



GRAPHIC
RACING BLACK
M302FRCBK/_



GRAPHIC
RACING WHITE
M302FRCWH/_



SOLID WHITE
M302BB910/_



MATT BLACK
M302BN900/_

| SIZE | CM |
|------|----|
| S | 56 |
| M | 58 |
| L | 60 |
| XL | 61 |
| XXL | 63 |



INFO

- WEIGHT : gr.1350±50
- SHELL : 1 size
- MATERIAL : Technopolymer
- INNER LINING : - Removable inner lining
- Removable cheek pads
- Anallergic fabric
- BUCKLE : - Micrometric system
- HOMOLOGATION : ECE-R22-05; Jet
- VISOR : - Anti scratch clear visor
- Small smoked sun visor
- VENTILATION : - 2 x upper front
- 2 x rear extractors



OPTIONAL

M30.3 D-VISOR



M30.3 D-VISOR
COLOR RANGE

GIVI®

EXPLORE. ENJOY.



GRAPHIC
SPEED WHITE
M303FSEWH/_



GRAPHIC
SPEED BLACK
M303FSEBK/_



GUN METAL
M303BG801/_



SOLID WHITE
M303BB910/_

| SIZE | CM |
|------|----|
| S | 55 |
| M | 57 |
| L | 59 |
| XL | 61 |



INFO

- WEIGHT : gr.1380±50
- SHELL : 1 size
- MATERIAL : Technopolymer
- INNER LINING : - Removable inner lining
- Removable cheek pads
- Anallergic fabric
- BUCKLE : - Micrometric system
- HOMOLOGATION : ECE-R22-05; Jet
- VISOR : - Anti scratch clear visor
- Small smoked sun visor
- VENTILATION : - 2 x upper front
- 3 x rear extractors



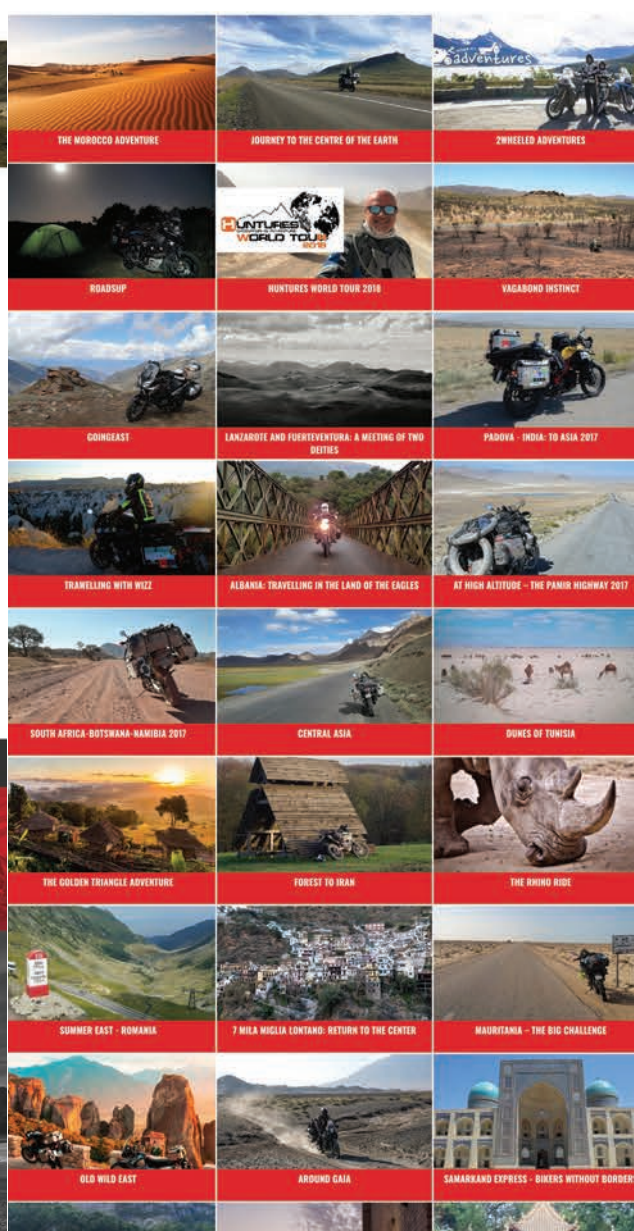
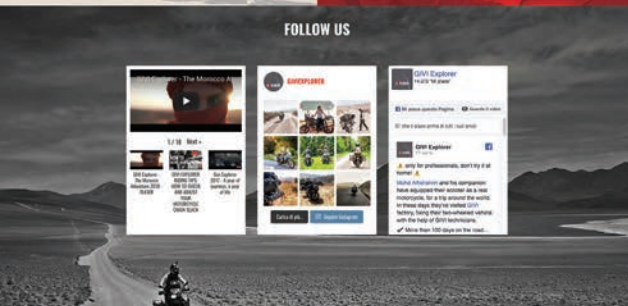
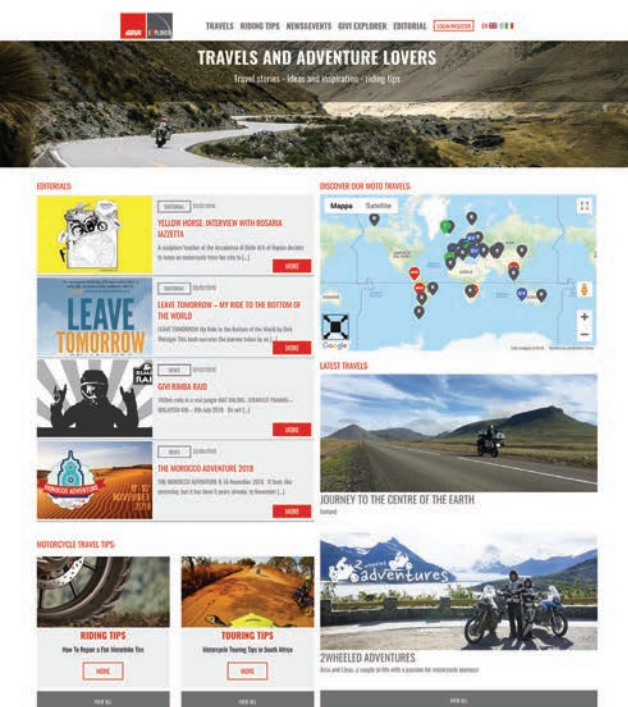
OPTIONAL

NOTE

This image shows a single sheet of white paper with horizontal ruling lines. The lines are evenly spaced and run across the width of the page. There are no margins, text, or other markings on the paper.

GIVI EXPLORER

The will to unite all passionate bike travellers under one sky, driven by the enthusiasm of sharing the excitement lived during our trips all over the world. This is what brought us to launch WWW.GIVIEXPLOER.COM, the web portal for those who never stop exploring the planet and experiencing different cultures and people...





HEADQUARTERS:

GIVI S.P.A. _ Flero (BS) Italy
Fax +39 030 35 80 518
info@givi.it _ www.givi.it

BRASIL:

GIVI DO BRASIL LTDA
Ph. +55 12 3644 8025 _ Fax +55 12 3644 8029
info@givi.com.br _ www.givi.com.br

FRANCE:

GIVI CONCESSIONNAIRES FRANCE
Ph. (04) 72 25 79 41 _ Fax (04) 72 25 03 73
givi.france@givi.fr _ www.givi.fr

GERMANY:

GIVI DEUTSCHLAND GmbH
Ph. (0) 911 955100 _ Fax (0) 911 9551022
office@givi-deutschland.de _ www.givi.de

MALAYSIA:

GIVI ASIA SDN BHD
Ph. (603) 6028 3800 _ Fax (603) 6028 1300
enquiry@givi.com.my _ www.givi.com.my

SPAIN:

GIVI CONCESSIONAIRES IBERICA S.L.U.
Ph. (93) 8906820 _ Fax (93) 8906202
givi@givi.es _ www.givi.es

UK:

GIVI UK LTD
Ph. (01327) 706220 _ Fax (01327) 706239
info@givi.co.uk _ www.givi.co.uk

USA:

GIVI USA INC
East Coast _ Ph. (704) 679 4123
West Coast _ Ph. (775) 359 0900
info@giviusa.com _ www.giviusa.com

VIETNAM:

GIVI VIETNAM CO. LTD.
Ph. +84 72 3769137 _ Fax +84 72 3769120
info@givi.com.vn _ www.givi.com.vn

INDONESIA:

PT GIVI INDONESIA
Ph. +6221 7588 2582 _ Fax +6221 7588 2431
info@givi.co.id _ www.givi.co.id

CHINA:

DONGGUAN GIVI TRADING CO. LTD.
Ph. + 86 769 22992660 _ Fax +86 769 22992680
office@givicn.com _ www.givimoto.com