

YOUR FUTURE IS IN YOUR HANDS

FIVE ADVANCED GLOVES
COLLECTION // 2022





On cover - Jean-Michel BAYLE. Undoubtedly the most eclectic rider in the history of motorcycle racing, brilliant both off-road and on-road. He accomplished what no other rider had accomplished before him, setting himself extraordinary goals that he rushed to achieve one after the other, creating an extraordinary track record, both on dirt and on asphalt: Motocross World Champion in the 125 (1988) and 250cc (1989) categories, Three-time U.S. champion in the same year (1991) in Supercross, 250cc motocross and 500cc motocross (which no American had ever done before). He left the off-road world at the top of his game to devote himself to road racing. He would become factory rider and pole man for the 500cc Grand Prix, the premier racing category, before devoting himself to endurance racing and winning the 24 Hours of Le Mans and the Bol d'Or the same year (2002). He now rides his Honda bikes for fun and regularly participates in Trail-Adventure raids worldwide organized by the world's leading manufacturer. Whether he's riding his Africa Twin, a road machine, an Enduro bike, or his bicycle, JMB takes the controls in FIVE gloves! It's an honor for us, given the high standards of this exceptional rider, who throughout his immense career has always paid special attention to every little detail. He knows that gloves are more than just accessories ...

En couverture - Jean-Michel BAYLE. Sans doute le pilote le plus éclectique de l'histoire du sport moto, brillant à la fois en tout-terrain et en vitesse. Il a accompli ce qu'aucun autre n'avait accompli avant lui, se fixant des objectifs hors du commun qu'il s'est empressé d'atteindre les uns après les autres, pour s'offrir un palmarès hors norme, tant sur terre que sur bitume. Champion du Monde de motocross 125 (1988) et 250cc (1989), Triple-champion des USA la même année (1991) en Supercross, motocross 250cc et motocross 500cc (ce qu'aucun américain n'avait réussi jusque-là). Il quitte le tout-terrain au sommet de son art pour se consacrer à la vitesse. Il deviendra pilote d'usine et pole man en Grand Prix 500cc, la catégorie reine, avant de se consacrer à l'endurance et remporter les 24 heures du Mans et le Bol d'Or la même année (2002). Il roule désormais pour le plaisir au guidon de ses Honda et participe régulièrement aux raids Trail-Adventure qu'organise le premier constructeur mondial aux quatre coins du monde. Qu'il pilote son Africa Twin, une machine de route, une enduro ou son vélo, JMB prend le guidon en gants FIVE ! C'est un honneur pour nous, compte tenu du niveau d'exigence de ce pilote d'exception, qui tout au long de son immense carrière, a toujours prêté une attention particulière au moindre détail. Il sait que les gants ne sont pas accessoires...

**YOUR FUTURE
IS IN YOUR HANDS**

TRUST THE GLOVE SPECIALIST.

PROTECTION / FITTING / DESIGN

YOUR GLOVES ARE NOT A MERE PIECE OF EQUIPMENT, THEY ARE **THE LINK** BETWEEN YOU AND YOUR MOTORCYCLE.

Vos gants ne sont pas qu'un simple accessoire,
ils sont le lien entre vous et votre moto.

Jean Michel BAYLE "JMB 111" - TFX1 GTX
Supercross, motocross & road racing Legend.
Honda ambassador, traveling the world on Honda Africa Twin.



CONTENT

FIVE GLOVES **08**

RACING **16**

STREET **48**

CUSTOM **104**

TRAIL / ADVENTURE **130**

WINTER **152**

HEAT TECHNOLOGY **176**

WOMAN **186**

OFF ROAD **226**

TECHNICAL GLOSSARY **256**

FULL COLLECTION **258**





WELCOME TO THE WORLD OF FIVE GLOVES

FIVE: Our name rings out loud and clear, since our mission is to protect hands (and the FIVE fingers that come with it...) during activities that require high-performance technical gloves, such as riding a two-wheeled vehicle. For over fifteen years now, we've been helping riders enhance their enjoyment at the handlebar, while protecting hands from injury in case of a fall, by equipping millions of motorcycle enthusiasts around the world. Gloves are an item designed for safety, but also for comfort.

OUR COMMITMENT CAN BE STATED IN THREE WORDS: **PROTECTION FITTING DESIGN.**

PROTECTION – because your hands are essential. Imagine having to spend even a single day without using one of your hands due to an injury, even one that's not serious. The smallest activity would be truly difficult, and the discomfort would be highly distressing. Protecting your hands is crucial. We don't always think about it, but as a reflex, we tend to put our hands out in front of us if we fall. They are, therefore, particularly exposed. Our goal is to reduce the risk of specific injuries related to motorcycle riding.

FITTING – because gloves form the link between you and your motorcycle. To truly savor piloting your motorcycle, this connection should be seamless, allowing for perfect responsiveness each time you touch the controls, whether you're accelerating, braking, or changing direction. Feeling every move at the controls (and, by extension, every movement of your motorcycle) is essential. It's even further proof of safety. And this should happen with a certain amount of comfort. Our desire is clearly to enhance the enjoyment you feel when riding your motorcycle.

DESIGN – because we consider a functional aesthetic to be especially important. In our view, the shape of each piece that makes up a glove stems from the role it plays in its use (protection, comfort, ventilation, abrasion resistance, etc.). This is why we design and craft each element independently, without using any standard pieces, so that a FIVE glove is exclusive and distinctive. Our designs are often imitated, but never equaled! So, you might as well choose the original, FIVE.

OUR CRAFT, **WE ARE GLOVE SPECIALISTS.**

Hands have the particular complexity of being extremely sensitive parts of the body (sensitive to cold, heat, and collisions), highly exposed in case of a fall, and replete with a number of small, fully articulated elements (bones, tendons, muscles, blood vessels). More than anything, it's through our hands that we experience one of our five senses, the sense of touch. In other words, the very least element of a glove that's badly designed or wrongly placed is immediately uncomfortable. A badly fitting glove or one that's not right for your body type or riding style can considerably diminish your riding pleasure, or even ruin what promised to be a great ride, because your attention would be focused on the discomfort rather than the beauty of the landscapes you're experiencing. A glove should therefore perfectly mold to the curves of your hand as it grips the handle bars and controls and allow for total freedom of movement of each and every joint. This is why our gloves are pre-shaped and why we take care to perfectly position protective elements, just as we do those that enable joint movement.

As you can see, you can't just design a pair of gloves like you do a piece of clothing. The glove is not just a simple extension of your jacket, contrary to what non-specialist brands may lead you to believe. In terms of gloves, the approach has to be even more technical, due to the small size of the pieces assembled, their number, and the freedom of movement of the hand that is hard to obtain, yet indispensable. Because, by definition, layering levels of fabric and protective elements can swiftly end up hindering the mobility of the hand, if real expertise isn't used. This is why we've made the choice to become THE Glove Specialist, because we believe in the virtues of specialization and expertise. It's hard to imagine how complex designing an effective, high-performance glove can be. Designing an "aesthetically pleasing" glove, like many brands do, is relatively easy. Creating a glove that's functional and both elegant, comfortable, and protective, no matter the size, and for mass production, presents a whole other challenge. This is our vocation. We're no cleverer, nor more intelligent, than general gear providers. We want to offer gloves that are far better than average, because that's all we make. We dedicate all our efforts and endless hours, day after day, with each passing month and every year, to just one product: gloves! And this is how we can keep developing our expertise and constantly improving the quality of our products.

A **FIVE GLOVE** FREQUENTLY OFFERS JUST THAT MUCH MORE.

Beyond the idea of comfort and perfect fit, a FIVE glove often offers so much more than competitors' gloves, if you truly look at the details. It's not necessarily obvious when you purchase them, but this makes a huge difference when you wear and use them, in terms of comfort, the level of protection, and durability. When you compare the materials that make up FIVE gloves from the rest of what's out there on the market, you'll see that, compared to products that are "supposedly comparable" (in terms of price, for example), FIVE frequently offers so much more. From authentic, full-grain leather, when competitors are offering synthetic leather...to real Carbon, when others only offer basic plastic with a carbon look...to Kevlar® lining, when other manufacturers offer no reinforced lining. And then, there's the external stitching, which offers greater comfort but is harder to make, as opposed to standard seams, etc. Our motto: offering the best possible product at the best possible price. The qualities of a FIVE glove can truly be appreciated once it's worn, even more than in-shop.

Using the finest components and materials: this is the FIVE hallmark.

We utilize optimal technology in our products, which leads us to select renowned technical partners, such as GORE-TEX® (weather-proof membrane), Primaloft®, 3M® Thinsulate™ (thermal lining), and Dupont de Nemours® (Kevlar®) Gütermann® (for threads that are durable, yet don't cut into the skin), and adopt their innovations for our most advanced products. For example, we were the first to use Nanofront®, an absorbent, non-slip material from Japan, on the palm of our high-end motocross glove, for peerless grip.



We're not content to simply design our products, we make them in our own factories.

Our technicians and colleagues are on site to make sure that each glove that emerges from our production lines is consistent with the initial guidelines set forth by our R&D department in France and our technical lab in Italy, which has developed expertise in gloves over several generations and ensures that our patterns (and our gloves) are in perfect working order...from the smallest to the very largest sizes!

Our gloves are designed to cover the hand, but they are also "hand" made, by expert workers and seamstresses. Making a glove requires a considerable number of manual steps, whether it's making pieces of the protective elements, cutting, embellishing, assembling, or sewing the elements that compose it. These workers handle the fabrics and rigid pieces and assemble them using a "plain old" sewing machine, with almost unbelievable dexterity. One of the essential aspects of the comfort and proper fit of a glove is the attention given to its assembly. At FIVE, our precision standard in terms of the stitches assembling the fingers, for example, is two times more precise than standard practices in the industry. This lower tolerance for gaps in the alignment of stitches creates an extra constraint for our workers and requires them to be particularly attentive. Nevertheless, it is absolutely essential for a perfect fit, and this is one of the keys to FIVE's expertise.

Producing in our own factories allows us to maintain perfect control over our output, including in quality management. It is precisely because our gloves are assembled by human beings, and not by robots (which would be unable to copy the movements of a seamstress), that sometimes a slight gap identified at the moment of assembly creates the need for stitching that may loosen over time. This remains an exception and affects less than 1% of our total output (0.6%, to be exact), a level well below industry averages. We are proud of this low rate (zero errors simply does not exist) and take responsibility for it, to the advantage of our clients, with Premium product support through our international sales network, in order to provide total satisfaction to users of FIVE gloves. Such is the case, for example, with the RFX Race, for which we provide customer support and even the option to have your gloves refurbished at our factory... for life*!

* Check details with our After-Sale Service Department.



THE DEVELOPMENT OF FIVE GLOVES IS **BASED ON REAL FEEDBACK.**

It's in collaborating with top-level riders and listening to the needs of and feedback from thousands of users throughout the world that we are able to develop ever more comfortable and protective gloves. We test our gloves under the extreme conditions offered by top-level competition, before we bring them to market. And the innovations we decide to use for racing benefits the amateur products in our range. Our official riders take part in MotoGP, Moto3, Superbike, Supersport, Endurance, Supermoto, Motocross, and Enduro world championships... They wear FIVE gloves on racetracks throughout the world and actively contribute to the evolution of our products. And so, when Michele PIRRO took a spill at over 300 kms/h at Mugello in 2018, and got up without a scratch on his hands, we were truly happy and proud to be his equipment partner. Unwittingly, he helped us study how our gloves perform in a real-life situation, well beyond any tests we carry out in

a lab. In the same way, when Peter HICKMAN (in 2018) or Dean HARRISON (in 2019) won the Isle of Man Tourist Trophy (the fastest and undoubtedly most dangerous road race in the world), when Jeremy GUARNONI triumphed at the 24 Hours of Le Mans in 2019, and when Thomas CHAREYRE was crowned 8-time Supermoto World Champion, or Steve HOLCOMBE took the Enduro 3 and Enduro GP World Championship titles for several years, all of them wearing FIVE gloves, we can't help thinking that our products do, in fact, deliver the goods for the most demanding riders and athletes. Though riders are at the very heart of our product development strategy, it's also a matter of passion. Because all of us at FIVE share a love affair with motor sports. In fact, we have several former professional riders now working for us at the office, and we feel blessed to share great friendships with a number of champions, who have worn or still wear our gloves. We're always proud to see our official riders raising up their trophies and breaking out the champagne on the podium, wearing FIVE gloves, a sign that these gloves have truly done their job during the race. ;) But, above all, we design and make our gloves for our clients. For you, who ride every day or simply for pleasure. Thus, we always listen to you and want to have your feedback on our products, so we can learn from experience and ensure that future generations of our gloves include all these evolutions.

Thanks to all of you, who choose to ride in FIVE gloves ;)

MAKE THE RIGHT CHOICE IN GLOVES.

To choose the right glove for you, several factors come into play. The type of motorcycle you're riding. The season you'll be using it in (Should it be ventilated? Does it need to be heated?). The average distance you'll be covering. How often you'll be using it. The level of protection and comfort required. Your budget. Though, in theory, the more a glove protects, the less comfortable it is, our entire job at FIVE is about flipping this equation and making an ultra-protective glove truly comfortable...and vice-versa. Obviously, no glove can totally protect you in case of an accident. That being said, FIVE gloves are designed to limit the risks of injury and meet CE Moto standards (with the corresponding label sewn inside, which features the Moto icon required in certain countries) on 3 different levels: CE (gloves without protective shells), CE KP1 (gloves with protective shells, providing an adequate level of protection), and CE KP2 (gloves with protective

shells, providing a superior level of protection). We think that each type of motorcycle and rider deserves a specifically adapted glove. But this hasn't stopped us from offering certain multipurpose, cross-category products. Our ambition is to offer you the widest possible selection, so you can determine the perfect type of glove for...YOU.

This is the purpose of this catalogue, where you can discover our products, down to every last detail. They are categorized according to different product groups: Racing, Street, Custom, Adventure, Winter, Heating Technology, Woman, and Off-Road, from the top-level product to the most affordable one. And you'll find the summary of our collection at the end of the catalogue, to provide you with a full overview in a flash. Choosing a FIVE glove shows a certain pragmatic spirit: You want the best possible glove for riding your motorcycle, and you know that you'll find it among the 90 styles that make up our 2021 collection! THE perfect glove for you does, in fact, exist in the pages of this catalogue. Now we'll let you sit back and discover which one is yours, and, especially, encourage you to try it on at one of our many FIVE OFFICIAL DEALERS all over the planet (with whom we share our experience and real solutions to make the most of their glove selection), before you undoubtedly slip it on and enjoy a ride with it.

FIVE ADVANCED GLOVES
You can feel the difference.

Dominique AEGERTER - RFX1
Moto E and World Supersport championship
testing our gloves in real crash situation

Peter Hickman - RFX Race
Tourist Trophy / Isle of Man
2019 Superstock TT / Supersport TT race 2 / Suberbike TT winner
2018 Senior TT winner
All-time lap recordman / Average speed : 135 mph - 218km/h

FIVE ADVANCED RIDERS TEAM*

Tribute to
Jason DUPASQUIER...

// MOTO GP

Michele PIRRO - RFX Race

// MOTO 2

Tom LUTHI - RFX Race / RFX1

// MOTO 3

Team BOE Owlride - RFX1
Riccardo ROSSI - RFX1
Stefano NEPA - RFX1
Ryusei YAMANAKA - RFX1
Maximilian KOFLER - RFX Race

// MOTO E

Dominique AEGERTER - RFX1
Matteo FERRARI - RFX Race

// WORLD SUPERBIKE

Jonas FOLGER - RFX1

// WORLD SUPERSPORT 600

Jules CLUZEL - RFX Race
Dominique AEGERTER - RFX1
Steven ODENDAAL - RFX Race
Phillip ÖTTL - RFX Race

// WORLD SUPERSPORT 300

Johan GIMBERT - RFX Race

// EWC ENDURANCE

Niccolo CANEPA - RFX Race
Kevin MANFREDI - RFX Race
Florian MARINO - RFX Race
Robin MULHAUSER - RFX Race

// TOURIST TROPHY BRITISH SUPERBIKE

Peter HICKMAN - RFX Race
Dean HARRISON - RFX Race
Julien TONIUTTI - RFX Race

// JAPAN SUPERBIKE

Kuysuke OKUDA - RFX1
Sodo AMAHARA - RFX Race
Tomoya OSHINO - RFX Race

// HANDE SUPERBIKE

Stéphane PAULUS - RFX Race

// RUSSIAN SUPERBIKE

Makar YURCHENKO - RFX1

// SPANISH SUPERBIKE

Aleix VIU - RFX1

// SUPERMOTO S1

Thomas CHAREYRE - SF1

// US DIRT TRACK

Jake JOHNSON - SF1
Ryan VARNES - SF1

// RALLY-RAID

Xavier DE SOULTRAIT - E2 « XDS »

// ENDURO GP

Steve HOLCOMBE - E1 / MXF PRORIDER S
Loïc LARRIEU - E1 / E2
Will RUPRECHT - E1 / MXF PRORIDER S
Matteo PAVONI - E1 / E2
Lorenzo MACORITTO - E1 / E2

// US SUPERCROSS

Thomas DO - MXF PRORIDER S / MXF4

// MXGP

Nathan WATSON - MXF PRORIDER S / MXF3

// MX2

Stephen RUBINI - MXF PRORIDER S
Gianluca FACCHETTI - MXF PRORIDER S

// EMX2

Tom GUYON - MXF PRORIDER S
Emil WECKMAN - MXF PRORIDER S

// EMX 125

Team YAMAHA MJC - MXF PRORIDER S
Team VHR KTM - MXF PRORIDER S
Team TECH 32 - MXF PRORIDER S

// EMX 2 / EMX OPEN

Team HONDA SR MOTOBLOUZ -
MXF PRORIDER S

// EMX 85

Félix CARDINEAU - MXF PRORIDER S

// SAND RACE

Jérémy HAUQUIER - MXF PRORIDER S
Daymond MARTENS - MXF PRORIDER S
Alexis COLIGNON - MXF PRORIDER S
Joey NUQUES - MXF PRORIDER S

// WOMAN MX

Mathilde MARTINEZ - MXF PRORIDER S
Francesca NOCERA - MXF PRORIDER S

// STARS & FRIENDS WEARING FIVE GLOVES

Jean-Michel BAYLE
Sébastien CHARPENTIER
Alexis MASBOU
Stéphane PETERHANSEL
Yves DEMARIA
Fred BOLLEY
Christophe POURCEL
Mickael MASCHIO
Serge NUQUES
Arnaud DEMEESTER
Bernard & Marc GARCIA
Stéphane & Boris CHAMBON

*FIVE Riders 2021
(Subject to change in 2022. Non-exhaustive list)



Dominique AEGERTER - RFX1
Leading the pack and fighting
for 2021 World Super Sport championship title
at Estoril race track

RACING

FROM MOTOGP RACING
TO EVERYDAY SPORT RIDING

This range is the product of FIVE's experience at the very highest level of international competition. Across all disciplines, MotoGP, Superbike, Supersport, and Endurance, gloves from the Racing range are designed for precision steering, both on the track and on the road*. They offer riders guaranteed efficiency, high performance, and protection. Maybe you'll never ride on a track, but what does it matter? Though some of our Racing gloves are clearly made for competition, others are more multi purpose in nature and will be perfect at the helm of your own machine for everyday riding... as long as you have that sport bike spirit. Many famous riders have chosen FIVE gloves during their careers, and each of them has contributed to the development of the styles you'll discover today. Some of the big names include: Andrea DOVISIOSO, Stéphane CHAMBON, Fabio QUARATARARO, Karel ABRAHAM, Jules CLUZEL, Peter HICKMAN, Sébastien CHARPENTIER and many others. With their help, we're proud to present the most advanced Racing range that has ever been made for mass production.

* Only some styles (RFX Race, RFX1, RFX2, CE-certified KP2) are recommended for competitive use on a track; others (RFX2 Airflow, RFX3, and RFX4 EVO) are designed for road sport use. Piloting a sport bike involves risk. FIVE gloves that are CE-certified, CE KP1 or CE KP2, are designed to reduce the effects of a fall; nevertheless, no glove can completely prevent the risk of injury. Ride safely!



Michele PIRRO - RFX Race
Moto GP PRAMAC DUCATI team



RFX RACE
PIRRO RED / BLUE



Jules CLUZEL - RFX Race
World Super Sport championship

RFX RACE
CLUZEL BLUE



— RACING / Collection 2022

Tom LUTHI - RFX Race
Moto 2 World Championship



RFX RACE
LUTHI WHITE / BLACK

- RACING
- STREET
- CUSTOM
- TRAIL _ ADVENTURE
- WINTER
- HEAT TECHNOLOGY
- WOMAN
- OFF-ROAD

RFX RACE



OFF-ROAD

WOMAN

HEAT TECHNOLOGY

WINTER

TRAIL _ ADVENTURE

CUSTOM

STREET

RACING



RFX RACE

THE MOST PROTECTIVE GLOVE ON EARTH.

The most advanced FIVE ADVANCED GLOVES™. Designed for high performance, the RFX RACE offers the highest level of safety currently available, thanks to its triple protective shell made of Thermoset Carbon Composite. This material, generally found in aerospace or Formula 1, provides exceptional abrasion resistance. This makes the glove more effective than an ordinary glove in the extreme situation of a long skid where the rider's hand may be trapped between the road surface and the bike. Protection is maximized by the use of full grain leather, multiple reinforcements with traditional carbon and a Kevlar® lining. The palm features digital pittards leather reinforcement for optimal grip in wet conditions. The Velcro® adjusting strap is concealed beneath a protective leather flap to reduce the risk of the glove being torn off in the event of a fall. The greatest attention has been paid to steering precision and comfort. RFX RACE: This is the glove designed and used by official FIVE riders in MotoGP, SBK and Endurance World Championships.

TECHNICAL FEATURES

01. 160 assembled elements per pair / 159g of technology per glove (size M)
02. Full-grain cowhide construction (topside) for durability / Full-grain goatskin (palm) for suppleness
03. Ventilated TPU metacarpal-knuckle and metacarpal protective shells reinforced with Carbon Thermoset for high abrasion resistance
04. Protective Carbon palm slider shell
05. Palm reinforcement in digital pittards leather
06. Thenar muscle (palm) reinforcement with a SuperFabric® patch
07. Internal Kevlar® lining
08. Outer stitching on the fingers (Gütermann thread)
09. TPU protective shell on the forearm
10. Stretch Kevlar® comfort panel (topside)
11. Dual closure system, with adjustment tab underneath a protective flap
12. Anti-twist accordion band between the ring and little fingers in order to limit the risk of fingers being pulled apart if you fall (a FIVE innovation)



Sebastien CHARPENTIER - RFX RACE
World Super Sport champion (2005, 2006)
24 hours of Le Mans winner (2000)
Honda ambassador



WHITE / BLACK
01210140
XS-07 / S-08 / M-09 / L-10
XL-11 / 2XL-12 / 3XL-13



BLACK
01210101

BLACK / RED
01170118



WHITE / FLUO YELLOW
01210159

WHITE / RED
01210158

RACING

STREET

CUSTOM

TRAIL - ADVENTURE

WINTER

HEAT TECHNOLOGY

WOMAN

OFF-ROAD



RFX1 // RFX1 REPLICA



STRAIGHT OUT OF TOP-LEVEL COMPETITIVE RACING.

Racing glove designed for the racetrack and sports. The RFX1 includes ventilated PU knuckle shells and a large carbon shell to protect the forearm. It offers all the features of a top-of-the-line glove geared towards performance. Kevlar® lining, carbon reinforcements and full grain leather for protection, Stretch Kevlar® for comfort, a protective barrier for both the palm and the top of the hand, while providing an exceptionally lightweight fit. It also features new Stretch Kevlar® and leather construction (instead of all-leather) on the thumb, for improved comfort. The palm features reinforcement in digital pittards leather for optimal grip in wet conditions. The Velcro® adjusting strap is concealed beneath a protective leather flap to reduce the risk of the glove being torn off in the event of a fall. This top-of-the-range Racing glove will delight demanding riders of sports bikes, who favor control sensitivity and fit, without overlooking safety. Available in standard and replica versions.

TECHNICAL FEATURES

01.

Full-grain cowhide construction (topside) for durability / Full-grain goatskin (palm) for suppleness
02.

Ventilated TPU metacarpal-knuckle protective shells
03.

Protective Carbon palm slider shell
04.

Palm reinforcement in digital pittards leather
05.

Thenar muscle (palm) reinforcement with a SuperFabric® patch
06.

Internal Kevlar® lining
07.

Outer stitching on the fingers (Gütermann thread)
08.

Carbon protective shell on the forearm
09.

Stretch Kevlar® comfort panel (topside)
10.

Dual closure system, with adjustment tab underneath a protective flap
11.

Anti-twist accordion band between the ring and little fingers in order to limit the risk of fingers being pulled apart if you fall (a FIVE innovation)



Florian MARINO
Endurance racer
FIVE road racing rider support



WHITE / FLUO YELLOW
01210259
XS-07 / S-08 / M-09 / L-10
XL-11 / 2XL-12 / 3XL-13



BLACK
01170201

BLACK / WHITE
01170219



- REPLICA - CAMO FLUO YELLOW
01201470

- REPLICA - CAMO RED
01201471

RACING

STREET

CUSTOM

TRAIL _ ADVENTURE

WINTER

HEAT TECHNOLOGY

WOMAN

OFF-ROAD



RFX2

FOR STARTING OUT ON THE TRACK.

After appearing as THE new Racing glove in 2020, the RFX2, our most affordable glove to get you started around the track, now features a new look that echoes the stylistic signatures of top-level competitive riding. It even adopts components used in more advanced styles, including the TPU cuff from the RFX Race, or the ventilated protective shells of the RFX1, and an internal Kevlar® lining, giving it all the features of a high-end glove. It offers an impressive level of performance, focused on an excellent comfort-to-protection ratio, with unequaled value for money in this category. Don't hesitate to examine every last detail of its technical specs: at a price like this, you'll definitely be convinced. In addition, its dynamic design makes it a glove that's just as beautiful to look at as it is to wear, even when you're idling. And that matters, when you love the sculpted curves of beautiful sport models.

TECHNICAL FEATURES

01.

Full-grain goatskin and Stretch Cordura® construction (topside) / Goatskin (palm), for extreme suppleness
02.

Ventilated TPU protective metacarpo-phalangeal shells
03.

Metacarpal reinforcements in 5mm-thick foam rubber
04.

Synthetic leather palm reinforcement with a silicone print for grip on the handlebars
05.

Stretch Cordura® comfort panels around the thumb and the ends of the index and middle fingers
06.

Internal Kevlar® lining on the top of the hand and around the thumb
07.

External stitching on the fingers (in Gütermann thread)
08.

TPU hypothenar protective shell (palm slider)
09.

TPU protective forearm shell (identical to the one used on the RFX Race)
10.

Dual closure system, with an adjustment tab under a protective flap
11.

Anti-twist accordion band between the ring and little fingers in order to limit the risk of fingers being pulled apart if you fall (a FIVE innovation)



BLACK / RED
01200418
XS-07 / S-08 / M-09 / L-10
XL-11 / 2XL-12 / 3XL-13



BLACK
01200492

BLACK / WHITE
01200419



FLUO YELLOW
01200433

RACING

STREET

CUSTOM

TRAIL - ADVENTURE

WINTER

HEAT TECHNOLOGY

WOMAN

OFF-ROAD



RFX2 AIRFLOW

RACING SPIRIT, TOP-CLASS VENTILATION!

The RFX2 AIRFLOW has considerably evolved in 2021 and echoes the characteristics of the latest RFX2, making it a standard in ventilated gloves. For sport and road use, it features the ventilated topside TPU shells of the RFX1 and RFX2, but includes specific materials (perforated leather, mesh fabric) that offer optimal airflow. The mixed-material palm, in full-grain leather, perforated leather, and synthetic leather reinforcements for optimal grip, features a TPR protective slider shell on the hypothenar. Its PU cuff, a legacy of the exceptional RFX Race glove, offers extra protection on the forearm and gives the RFX2 a truly sleek and stylish look. The thumb and topside are in mesh fabric for maximum airflow. It also features gel reinforcements on the thumbs, for greater comfort at the controls. The RFX2 Airflow offers high-level protection, excellent fit, and, more than anything, effective ventilation that makes it the perfect glove for riding a sport bike in summertime.



BLACK / FLUO YELLOW
01210516
XS-07 / S-08 / M-09 / L-10
XL-11 / 2XL-12 / 3XL-13

BLACK
01210501



TECHNICAL FEATURES

01. Perforated Full-grain goat-leather and mesh fabric construction, for ventilation (topside) / Goat leather on the palm side, for extreme suppleness
02. Ventilated TPU metacarpophalangeal protective shells
03. 5 mm-thick foam rubber metacarpal reinforcements
04. Synthetic leather palm reinforcement with silicone print for improved handlebar grip
05. Honeycombed 3D mesh panels around the thumbs and ends of the index and middle fingers
06. Internal Kevlar® lining on the topside of the hand
07. External stitching on the fingers (in Gütermann thread)
08. Hypothenar protective shell (palm slider) in TPR
09. Forearm protective shell in TPU (identical to the one used for the RFX Race)
10. Dual closure system, with adjustment tab underneath a protective flap
11. Anti-twist accordion band between the ring and little fingers in order to limit the risk of fingers being pulled apart if you fall (a FIVE innovation)





RFX3

THE AFFORDABLE SPORT GLOVE.

A multi-purpose sport and road glove, the RFX3 shows off its high-performance side by adopting the ventilated protective shells of the high-end Racing styles. Its full-grain leather construction, forearm protection, and TPR protective palm slider make it a safe bet in terms of comfort and protection. Its Velcro® adjusting strap concealed beneath a protective leather flap allows it to reduce the risk of the glove being torn off in the event of a fall. FIVE's real feat here lies in giving the RFX3 the main features of the best Racing gloves, at a truly reasonable price.



TECHNICAL FEATURES

- 01. Full-grain goatskin construction (topside and palm) for suppleness
- 02. Ventilated TPU metacarpal-knuckle protective shells
- 03. TPR palm slider hypothenar muscle protective shell
- 04. Palm reinforcement in perforated Clarino® leather
- 05. Forearm protection with leather panel and TPR logo
- 06. Leather accordion comfort panels
- 07. Dual closure system, with adjustment tab underneath a protective flap



BLACK / RED
01220718
XS-07 / S-08 / M-09 / L-10
XL-11 / 2XL-12 / 3XL-13



BLACK
01170701



BLACK / WHITE
01170719



BLACK / FLUO YELLOW
01220716

RACING

STREET

CUSTOM

TRAIL _ ADVENTURE

WINTER

HEAT TECHNOLOGY

WOMAN

OFF-ROAD

RFX4 EVO





RFX4 EVO

SOMEWHERE BETWEEN ROAD AND TRACK.

The RFX4 EVO makes its debut within the 2022 collection and is designed for riders who put comfort over performance and are looking for all the versatility of a sport glove...or all the sportiness of a versatile glove. :) By adopting the brand-new FIVE ERGO PROTECH® ergonomic protective shell used in both our urban and trail gloves, the RFX4 EVO offers a less aggressive look than that of the RFX1, RFX2 and RFX3. Though it fits in so naturally at the controls of a sportier bike, the RFX4 EVO is also right for riding a powerful scooter or a roadster, and thus, offers a more reassuring alternative to short gloves, which are more commonly used with this type of machine. It also offers the extra protection typical of Racing gloves, with all the comfort often found in less exclusive gloves. The RFX4 EVO is well and truly the perfect compromise between our road gloves and gloves for pure racing use.

TECHNICAL FEATURES

01. Full-grain goat leather construction (topside and palm) for suppleness
02. Semi-soft ERGO PROTECH® metacarpophalangeal protective shell
03. ERGO PROTECH® soft TPR hypothenar protective shell (palm slider)
04. PU palm reinforcement for better grip on the handlebars
05. Forearm protection featuring a leather panel and 3D TPR logo
06. Dual closure system with a Velcro® tab and a cuff adjustment tab
07. Comfort gussets on the wrist and fingers
08. Touch Screen™ system for handling touchscreen devices



WHITE / FLUO YELLOW
01220955
XS-07 / S-08 / M-09 / L-10
XL-11 / 2XL-12 / 3XL-13



BLACK
01220901



BLACK / WHITE
01220919



BLACK / WHITE / RED
01220993

RACING

STREET

CUSTOM

TRAIL _ ADVENTURE

WINTER

HEAT TECHNOLOGY

WOMAN

OFF-ROAD



RFX SPORT



YOUR DAILY SPORT.

Launched in 2020, the RFX Sport is now the entry-level style for our Racing range. It's more focused on comfort than performance, and is designed for riders looking for an effective, accessible glove for everyday riding on a sport or road bike. It offers a more-than-satisfactory level of protection and comfort for road use, with its goatskin construction, main one-piece PVC shell concealed underneath the leather (perforated for an energetic look), multiple foam reinforcements, and TPR hypothenar protective shell. It deliberately retains a relatively classic look for a sport glove, so it can be your perfectly discreet companion from the road to the office.

TECHNICAL FEATURES

01.

Full-grain goatskin construction (topside and palm) for extreme suppleness
02.

PVC metacarpo-phalangeal protective shells under leather (perforated for a great look)
03.

Stretch comfort gusset over the wrists
04.

External stitching on the fingers
05.

Palm and ring and little finger reinforcements in synthetic leather
06.

TPR hypothenar protective shell (palm slider)
07.

Dual closure system with an adjustment tab under a protective flap
08.

Forearm protection from foam reinforcement under leather
09.

Index, middle, little finger and thumb knuckle protection from foam under leather
10.

Reflective nighttime visibility panel



BLACK
01201501
XS-07 / S-08 / M-09 / L-10
XL-11 / 2XL-12 / 3XL-13



BLACK / RED
01201518

BLACK / FLUO YELLOW
01211516

RACING

STREET

CUSTOM

TRAIL _ ADVENTURE

WINTER

HEAT TECHNOLOGY

WOMAN

OFF-ROAD



RFX SPORT AIRFLOW

MORE AIR TO PLAY SPORT.

Launched in 2020, the RFX Sport is now the entry-level style for our Racing range. Here we find it in its ventilated AIRFLOW version, made for summertime riding. It's more focused on comfort than performance, and is designed for riders looking for an effective, accessible glove for everyday riding on a sport or road bike when temperatures start to rise. It offers a more-than-satisfactory level of protection and comfort for road use, with its goatskin construction, main one-piece PVC shell concealed underneath the leather, multiple foam reinforcements, and TPR hypothenar protective shell. It deliberately retains a relatively classic look for a sport glove, so it can be your perfectly discreet companion from the road to the office.



BLACK
01221701
XS-07 / S-08 / M-09 / L-10
XL-11 / 2XL-12 / 3XL-13



TECHNICAL FEATURES

- 01. Full-grain goatskin construction (topside and palm) for extreme suppleness (perforated for ventilation)
- 02. PVC metacarpo-phalangeal protective shells under leather
- 03. Stretch comfort gusset over the wrists
- 04. External stitching on the fingers
- 05. Palm and ring and little finger reinforcements in synthetic leather
- 06. TPR hypothenar protective shell (palm slider)
- 07. Dual closure system with an adjustment tab under a protective flap
- 08. Forearm protection from foam reinforcement under leather
- 09. Index, middle, little finger and thumb knuckle protection from foam under leather
- 10. Reflective nighttime visibility panel



RFX^{WP}



OFF-ROAD

WOMAN

HEAT TECHNOLOGY

WINTER

TRAIL _ ADVENTURE

CUSTOM

STREET

RACING



RFX^{WP}



THE HIGH-PERFORMANCE WEATHERPROOF GLOVE.

Designed to satisfy sport-bike aficionados who love to feel the road even when it rains, the RFX WP made a bold entrance into our Racing range. It's made for the open road, but is perfect for anyone who loves sport-inspired equipment. You're sure to fall for this glove, which looks a lot like the ones our official pro riders use, with exceptional control sensitivity and other qualities that make it enjoyable for everyday wear. So, it inherits details inspired by competitive riding, and at the same time, features refined details usually reserved for purely road, or even urban, riding. Its goat-leather construction with outside seaming, a cuff that emulates the RFX Race style, and its ERGO PROTECH® one-piece carbon shell, all make it look truly sporty. The 5_DRYTECH™ breathable, weatherproof membrane creates a barrier against the rain, and the anti-slip digital PU reinforcements and stretch, water-repellent fabric insets make it effective and fun to wear, even when the weather's bad. The Touch Screen™ and Clear Vision Pad™ systems will make it your faithful companion on everyday rides. It's deliberately uninsulated, so you can focus on performance, perfect for when temperatures are mild. The RFX WP now proudly takes its place within the FIVE collection as the sportiest of all our weatherproof gloves. It'll be your go-to glove as soon as the skies look threatening...

TECHNICAL FEATURES

- 01. Topside: Full-grain goat-leather and Cat Eye™ fabric construction / Palm: Goat leather for extreme suppleness / PU digital palm and thumb reinforcement for grip / Water-repellent stretch fabric
- 02. 5_DRYTECH™ breathable, weatherproof membrane, partially bonded to the glove on the palm side
- 03. Semi-rigid TPU Racing Cuff, emulating the RFX Race style
- 04. ERGO PROTECH® one-piece carbon protective shell
- 05. Mini-protective shells in soft TPE and comfort gussets on the index and middle fingers
- 06. Hypothenar protective shell (palm slider) in TPR
- 07. 3 mm foam reinforcement underneath the leather at the thenar and on the thumbs
- 08. Outside seaming on the fingers
- 09. Reflective elements on the index and middle fingers and cuff
- 10. Dual closure system on the wrist and adjustable cuff with a Velcro® tab
- 11. Internal Bemberg™ comfort lining
- 12. Anti-twist accordion band between the ring and little fingers so your fingers don't get pulled apart if you fall (a FIVE innovation)
- 13. Clear Vision Pad™ visor cleaning system on the left-hand side
- 14. Touch Screen™ system for handling electronic devices (index finger)



SPORT^{WP}



TECHNICAL FEATURES

- 01. Water-resistant stretch fabric construction (topside) for weather resistance and comfort / Full-grain goatskin (palm) for suppleness 5_DRYTECH™ weatherproof membrane
- 02. Thinsulate™ 70g lightweight thermal insulation
- 03. Bemberg™ internal comfort lining
- 04. One-piece PU metacarpal phalangeal protective shell with a visible carbon look
- 05. Hypothenar protective shell (palm slider) in TPR
- 06. Forearm protection with a sleeve and 3D TPR shell
- 07. PU GRIP palm reinforcement
- 08. Reflective print on the fingers and cuffs for nighttime visibility
- 09. Racing glove-inspired dual closure system
- 10. Touch Screen™ system (on index finger) for handling touchscreens without removing gloves

THE WEATHERPROOF GLOVE WITH A SPORTY LOOK.

Even though its name is already a major hint, the SPORT WP isn't just for piloting sport machines. Very simply, it has a sporty look, and will be perfect for those looking to ride full-on, whether it's a sport bike, roadster, touring bike, or something else. Weatherproof, with its 5_DRY-TECH™ membrane, and featuring lightweight Thinsulate™ 70g thermal insulation, it's designed for mid-season riding, when the chance of rain is increasing, and temperatures are yet to reach extreme levels. Its super-comfortable construction, made in a water-resistant stretch fabric for the topside and a goatskin and PU GRIP-reinforced palm, its sleeve equipped with a protective Soft TPR shell and its metacarpal protective shell with a visible carbon look, give the SPORT WP all its personality.



STREET

TRENDS COME
FROM THE STREET

The STREET collection is designed for riders in urban or suburban environments seeking an effective everyday glove, for maximum pleasure at the controls. This collection offers a wide selection in four distinct groups STREET SPORT, STREET_AIR, STREET URBAN and STREET-WP (weatherproof), each of which features its own vision of two-wheeled riding, with all of them following the “PROTECTION / FITTING / DESIGN” principle that is at the heart of FIVE.

STREET SPORT gloves, instantly recognizable with their visible protective shells, a design feature invented by FIVE and inspired by our competitive gloves, are perfect for sporty style and for no-holds-barred riding. These include the STUNT, an iconic style from our brand, or the SF series, crowned Supermoto World Champion 14 times over, with the SF1. The styles in the STREET-AIR selection, which come from a variety of backgrounds, share a love of ventilation and are made for summertime use. They are your go-to gloves as soon as temperatures start to sizzle. The STREET-URBAN group includes all-leather, fabric, or mixed styles with protective shells that are softer and more discreet, ideal for riders crisscrossing the city in any number of ways (scooter, roadster, or supermoto, from smaller two-wheelers to heavy motorbikes...), always looking out for both their comfort and safety. Last but not least, the STREET-WP category includes weatherproof gloves commonly called mid-season gloves, essential for riding serenely in the rain, in town or outside town.



RC-C
RED



URBAN
BLACK



→ **RS3 EVO**
KAKI



SF1





SF1

AS GOOD ON TRACK AS ON THE STREET – SUPERMOTO WORLD CHAMPION.

The SF1 can be considered the short racing glove par excellence. Perfect for sport, roadster, and supermoto riding. Made famous by its 14 Supermoto World Champion titles (8 at the hands of Thomas CHAREYRE), the SF1 has been totally redesigned in 2018, creating a brand-new style that's even more efficient. Designed for high-performance connoisseurs looking for a level of protection equivalent to that found on high-end racing gloves, without the bulk, it promises optimal protection of the ulna. With its palm that includes a leather digital pittards reinforcement, it offers optimal grip under all circumstances. With full-grain leather, Kevlar® lining, Carbon reinforcements and a SuperFabric® patch on the palm, Stretch Kevlar® for comfort, the new SF1 is protective both on the inside and on the topside of the hand. Simply THE benchmark style in its category.



BLACK
02170101
XS-07 / S-08 / M-09 / L-10
XL-11 / 2XL-12 / 3XL-13



WHITE / FLUO YELLOW
02210159



TECHNICAL FEATURES

- | | |
|---|--|
| 01. Full-grain cowhide construction (topside) for durability/ Full-grain goatskin (palm) for suppleness | 08. Carbon protective shell on the forearm |
| 02. Ventilated TPU metacarpal-knuckle protective shells | 09. Stretch Kevlar® comfort panel (topside) |
| 03. Protective Carbon palm slider shell | 10. Closure system with Velcro® tab and leather on/off pull tab |
| 04. Palm reinforcement in digital pittards leather | 11. Anti-twist accordion band between the ring and little fingers in order to limit the risk of fingers being pulled apart if you fall (a FIVE innovation) |
| 05. Thenar muscle (palm) reinforcement with a SuperFabric® patch | |
| 06. Internal Kevlar® lining | |
| 07. Outer stitching on the fingers | |



Thomas CHAREYRE - SF1
8 x Supermoto World Champion with FIVE Gloves



SF2

COMPACT AND SPORTY.

A short sport glove, the SF2 takes up the superior SF1 concept and makes it even more multi-purpose and affordable. Perfect for sport bike, roadster, and supermoto riding. Lightweight and compact, its ventilated PU shells offer both protection and airflow. Built-in protective padding (underneath the leather) on outer knuckles. Perforated full-grain leather and stretch Cordura® construction with accordion-style gussets. Palm and thumb reinforcement in synthetic leather for better grip. Airprene® wristband for excellent hold. TPR and Velcro® closure. Short leather cuff with built-in memory-foam reinforcement underneath the leather at the forearm level. It provides top-level performance on any type of machine, and features a clearly sporty look that won't go unnoticed.

TECHNICAL FEATURES

01. Full-grain cowhide construction (topside) for durability / Full-grain goatskin (palm) for suppleness

02. Ventilated TPU metacarpal-knuckle protective shells

03. Protective TPR palm slider shell

04. Palm reinforcement in perforated synthetic leather

05. Thenar muscle (palm) reinforcement with foam patch underneath the leather

06. Outer stitching on the fingers

07. Forearm protection with foam patch underneath the leather
08. Stretch Cordura® comfort panel

09. Closure system with TPR tab + Velcro® and leather on/off pull tab



GREY / RED
02210283
XS-07 / S-08 / M-09 / L-10
XL-11 / 2XL-12 / 3XL-13



GREY / FLUO YELLOW
02210280

BLACK
02210201

RACING

STREET

CUSTOM

TRAIL _ ADVENTURE

WINTER

HEAT TECHNOLOGY

WOMAN

OFF-ROAD



SF3

THE ULTRA COMFORTABLE SHORT SPORTY GLOVE.

The SF3 is a short, urban sport glove that's all about extreme suppleness, effective ventilation, and top-level protection... all with a bold FIVE identity. On the topside: leather construction and ventilated PU Racing protective shell on the metacarpals. Ventilated leather on the index and middle fingers. Ventilated synthetic leather reinforcement on the thumb. The inside of the palm is in full-grain leather with synthetic leather reinforcements and a TPR shell. Several textile elements (3D Airmesh, 4-way Spandex™ on the thumb, ring finger, and little finger, Lycra® fourchettes, Airprene® cuff) make it exceptionally comfortable. The wide FIVE logo in soft TPR combines a sporty look with protection. This style is now an absolute must-have.



TECHNICAL FEATURES

- 01. Full-grain cowhide construction (topside) for durability and Airmesh fabric for ventilation / Full-grain goatskin (palm) for suppleness
- 02. Ventilated TPU metacarpal-knuckle protective shells
- 03. Protective TPR palm slider shell
- 04. Palm reinforcement in perforated synthetic leather
- 05. Airprene® cuff
- 06. 4-Way Spandex™ comfort panels (topside)
- 07. Closure system with TPR tab + Velcro® and on/off pull tab



BLACK / WHITE
02182119
XS-07 / S-08 / M-09 / L-10
XL-11 / 2XL-12 / 3XL-13



BLACK / RED
02182118

BLACK / FLUO YELLOW
02182116



BLACK
02182101

RACING

STREET

CUSTOM

TRAIL _ ADVENTURE

WINTER

HEAT TECHNOLOGY

WOMAN

OFF-ROAD

THE STUNT

THE CONCEPT
INVENTED BY FIVE...
REINVENTED!

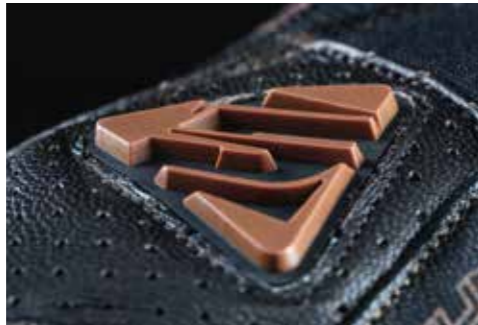
Underlying the creation of the STUNT by FIVE was one powerful concept: offering a sport-style glove, designed for urban and suburban riding, that would also be as protective as a track glove and as lightweight and comfortable as a motocross glove. The STUNT has succeeded in perfectly uniting all these elements by adopting a topside made of stretch elements featuring protective shells with a sharp design, and a leather palm that includes a protective carbon slider. Though FIVE invented the STUNT, which has earned the brand its worldwide reputation, this concept is often copied, but never equaled. So, here's a piece of advice: demand nothing less than the original. Because who better than FIVE could take this concept to the next level? The STUNT EVO LEATHER VENTED, STUNT EVO REPLICA, STUNT EVO, and STUNT EVO AIRFLOW are worthy heirs to the one-and-only, original STUNT...Upgraded.



STUNT EVO LEATHER VENTED

THE BREATHABLE LEATHER STUNT.

Includes perforated leather on the palm and on its topside construction, for considerable airflow in summer weather.



TECHNICAL FEATURES

- 01. Full-grain cowhide construction (topside) for durability / Full-grain goatskin (palm) for suppleness
- 02. Ventilated TPU metacarpal-knuckle and knuckle protective shells
- 03. Protective Carbon/TPR palm slider
- 04. Palm reinforcement in perforated Clarino®
- 05. Airprene® and 4-way Spandex™ cuff
- 06. 4-Way Spandex™ comfort panels
- 07. Closure system with tab + Velcro® and Clarino® on/off pull tab
- 08. Touch Screen™ system (thumb and index finger) for touchscreen handling.



BROWN
02190407
XS-07 / S-08 / M-09 / L-10
XL-11 / 2XL-12 / 3XL-13



BLACK
02170401





STUNT EVO REPLICA

THE GRAPHIC VERSION OF THE STUNT.

If you find wearing a black glove boring and prefer to show your preference for attractive design, choose the STUNT EVO REPLICA and its various graphic and colorful variations.

TECHNICAL FEATURES

01.

Sublimated Polymesh fabric construction (topside) / Full-grain goatskin for suppleness, and siliconed Clarino® for grip (palm)
02.

Ventilated TPU metacarpal-knuckle and knuckle protective shells
03.

Protective Carbon/TPR palm slider
04.

Palm reinforcement in perforated Clarino®
05.

Airprene® and 4-way Spandex™ cuff
06.

4-Way Spandex™ comfort panels
07.

Closure system with Clarino® tab + Velcro® and leather on/off pull tab
08.

Touch Screen™ system (thumb and index finger) for touchscreen handling



SKULL BLACK
02200599
XS-07 / S-08 / M-09 / L-10
XL-11 / 2XL-12 / 3XL-13



SHADE GREY
02200508

SHADE RED
02200503

SHADE ORANGE / NAVY
02200598



SPREAD FLUO YELLOW
02200533

SPREAD GOLD
02200597

RACING

STREET

CUSTOM

TRAIL _ ADVENTURE

WINTER

HEAT TECHNOLOGY

WOMAN

OFF-ROAD



STUNT EVO

THE ORIGINAL STUNT EVO.

The best-selling version of the STUNT EVO which makes this glove an essential model which has contributed to the success and reputation of FIVE around the world. Versatile and efficient on the handlebars of many types of machines. A must-have, undeniably.

TECHNICAL FEATURES

01.

4-Way Spandex™ fabric construction (topside) for elasticity/ Full-grain goatskin (palm) for suppleness, and siliconed Clarino® for grip (palm)
02.

Ventilated TPU metacarpal-knuckle and knuckle protective shells
03.

Protective Carbon/TPR palm slider
04.

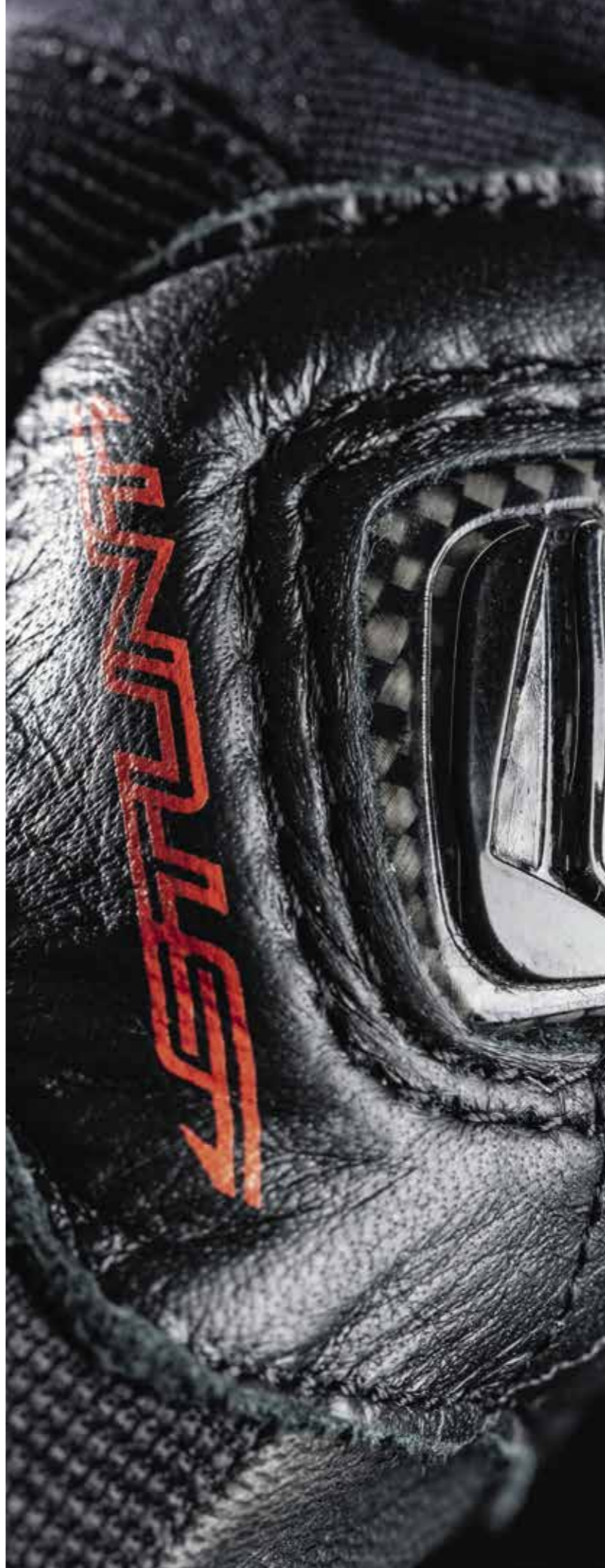
Palm reinforcement in perforated Clarino®
05.

Airprene® and 4-way Spandex™ cuff
06.

4-Way Spandex™ comfort panels
07.

Closure system with Clarino® tab + Velcro® and leather on/off pull tab
08.

Touch Screen™ system (thumb and index finger) for touchscreen handling



BLACK / RED
02210618
XS-07 / S-08 / M-09 / L-10
XL-11 / 2XL-12 / 3XL-13



BLACK / WHITE
02170619



KAKI
02210695



BLACK
02170601

RACING

STREET

CUSTOM

TRAIL _ ADVENTURE

WINTER

HEAT TECHNOLOGY

WOMAN

OFF-ROAD



STUNT EVO AIRFLOW

THE VENTILATED VERSION OF THE STUNT EVO.

It uses wide mesh topside construction for optimal airflow that is so crucial when temperatures rise. This is one of the most ventilated styles in the range.

TECHNICAL FEATURES

01.

3DMesh™ wide-cell fabric construction (topside) for ventilation / Full-grain goatskin for suppleness, and siliconed Clarino® (palm) for grip
02.

Ventilated TPU metacarpal-knuckle and knuckle protective shells
03.

Protective Carbon/TPR palm slider
04.

Palm reinforcement in perforated Clarino®
05.

Airprene® and 4-way Spandex™ cuff
06.

4-Way Spandex™ comfort panels
07.

Closure system with tab + Velcro® and Clarino® on/off pull tab
08.

Touch Screen™ system (thumb and index finger) for touchscreen handling



BLACK / FLUO YELLOW
02210716
XS-07 / S-08 / M-09 / L-10
XL-11 / 2XL-12 / 3XL-13



BLACK / WHITE
02220719

BLACK
02210701

	RACING
STREET	
CUSTOM	
TRAIL _ ADVENTURE	
WINTER	
HEAT TECHNOLOGY	
WOMAN	
OFF-ROAD	



RS5 AIR



THE MOST VENTILATED CITY GLOVE.

The RS5 made a striking entrance into the Street range. Here we have the most ventilated city glove ever produced by FIVE, perfect for when outside temperatures reach peak levels. Its topside construction in wide-cell 3D Airmesh fabric enhances airflow. In the same way, its palm features a ventilation panel (an exclusive on this style and a first for our motorbike gloves) that provides perfect moisture evaporation. The Lycra® fourchettes between the ring and middle fingers and the 2.2 Mesh between the other fingers offer the perfect balance between flexibility and ventilation. A wide protective shell is included underneath the topside air-cell construction, for optimal safety. The Touch Screen™ system allows you to operate touchscreens without removing your gloves. And last, but not least, the wide TPR logo offers protection and makes a bold style statement on this glove.

TECHNICAL FEATURES

01. Mesh™ wide-cell fabric construction (topside) for optimal ventilation / Synthetic leather (palm) for durability

02. PU metacarpal-knuckle protection underneath the fabric

03. TPR protective palm slider shell

04. Ventilation panel on the palm

05. Lycra® fourchettes and comfort gusset for optimal fit

06. Airprene® cuff for adjustment, comfort and ventilation

07. Closure system with TPR tab + Velcro® and synthetic leather on/off pull tab
08. Touch Screen™ system (thumb and index finger) for touchscreen handling



FLUO YELLOW
02182033
XS-07 / S-08 / M-09 / L-10
XL-11 / 2XL-12 / 3XL-13



RED
02182003

BLACK
02182001

RACING

STREET

CUSTOM

TRAIL _ ADVENTURE

WINTER

HEAT TECHNOLOGY

WOMAN

OFF-ROAD



RS3 EVO AIRFLOW



THE VENTILATED MULTIPURPOSE URBAN GLOVE.

Totally redesigned for 2022, the RS3 EVO is meant to replace one of the most popular FIVE gloves, the RS3. Here we have it in its AIRFLOW version that's ventilated, designed for urban riding in summertime. It features the very latest FIVE ERGO PROTECH® ergonomic protective shell for greater comfort and effectiveness, and its topside construction in honeycombed mesh fabric helps offer perfect airflow. Easy to slip on and take off, it's perfect for riders zipping all over town throughout the course of a day. It will be your faithful companion on your everyday urban rides at the controls of any type of machine, as soon as temperatures rise, offering you a cooling stream of air.

TECHNICAL FEATURES

01.

Honeycombed mesh fabric construction (topside) for ventilation/Synthetic leather (palm) for durability
02.

One-piece FIVE ERGO PROTECH® TPR metacarpo-phalangeal protective shells under fabric
03.

TPR hypothenar protective shell (palm slider)
04.

One Way Stretch™ fourchettes for perfect fit
05.

Airprene® wristband for fit, comfort, and the elimination of perspiration
06.

3D mesh fabric inserts over the wrist for better ventilation
07.

Textured 3D logos and TPR knuckle protective elements
08.

Closure system featuring a Velcro® tab and Pull'N'Ride™ pull tab
09.

Touch Screen™ system (index finger) for handling touchscreen devices



BLACK / WHITE
02220819
XS-07 / S-08 / M-09 / L-10
XL-11 / 2XL-12 / 3XL-13



BLACK / RED
02220818



BLACK / FLUO YELLOW
02220816



BLACK
02220801

RACING

STREET

CUSTOM

TRAIL _ ADVENTURE

WINTER

HEAT TECHNOLOGY

WOMAN

OFF-ROAD



EN 13594:2015

SPORTCITY

THE BEST CITY GLOVE.

The SportCity allows you to approach city riding with a smile. It received the top technical grade (9/10) when city gloves were tested by influential Moto Magazine starting in 2014. This is the perfect glove for a basic, custom, or classic bike, or a scooter, with its exceptional fit paired with a stellar level of protection. Its sharp look, with its perforated full-grain leather that conceals valuable protective shells and its FIVE metal insignia, allows you to combine it with any outfit, ever so elegantly.



TECHNICAL FEATURES

- 01. Full-grain cowhide construction (topside) for durability, perforated for ventilation / Full-grain goatskin (palm) for suppleness
- 02. One-piece PVC metacarpal-knuckle and knuckle protective shells, underneath the leather
- 03. Protective PVC palm slider shell underneath leather
- 04. Palm reinforcement in perforated digital synthetic leather
- 05. Leather accordion comfort gussets
- 06. Closure system with leather tab + press-stud and leather on/off pull tab
- 07. Touch Screen™ system (thumb and index finger) for touchscreen handling.



BLACK
02170801
XS-07 / S-08 / M-09 / L-10
XL-11 / 2XL-12 / 3XL-13



BROWN
02170807



EN 13594:2015

URBAN



THE LONG URBAN GLOVE.

A recent design from FIVE, made for urban use (as its name indicates), the Urban opts for a long, non-bulky cuff, offering its rider maximum protection and the option of wearing it over or under your jacket's sleeve. Compared to short gloves, the style of the Urban lends it a certain elegance that's clearly classic. You can feel safe, too, with its integrated one-piece PVC topside shell under the leather, and numerous protection elements. The perforated leather insets add visual appeal that's also practical, contributing to enhanced sweat evaporation. The accordion gusset on the wrist, coupled with a Velcro® adjustment tab, makes for easy on/off and perfect fit. And last, but not least, the Urban features the Touch Screen™ system that allows you to activate the touchscreen on a GPS or smartphone device. It's always practical not to have to take off your gloves to make a call or find your way in the urban jungle.

TECHNICAL FEATURES

- 01. Main construction in full-grain goatskin and perforated goatskin (topside and palm) for suppleness and ventilation
- 02. Long cuff that includes protective foam on the forearm
- 03. One-piece PVC metacarpal-phalangeal protection under leather (perforated for a great look)
- 04. Foam protective cushioning on the index, middle, ring, and little fingers
- 05. Comfort gussets for the index and middle fingers
- 06. Lycra® between the fingers for suppleness and air circulation
- 07. Synthetic leather palm reinforcement for grip
- 08. Synthetic leather reinforcement and TPR protective shell for the hypothenar
- 09. Simple closure featuring a synthetic leather and Velcro® tab
- 10. Long leather cuff with integrated foam forearm protection and stretch accordion zone
- 11. Touch Screen™ system (index finger) for handling device screens



BLACK
02202401
XS-07 / S-08 / M-09 / L-10
XL-11 / 2XL-12 / 3XL-13



RS-C

THE VERSATILE PREMIUM URBAN GLOVE.

Building on the success of the RS styles in the Street range, we've decided to offer a more elaborate, high-performance version of our affordable, versatile urban gloves. And so, carbon, a high-grade, technical, lightweight material, makes its appearance in this product group with the RS-C, in a superb one-piece protective shell. But this isn't the only refined detail here. The thick TPR logo that serves as protection extends into an adjustment tab in the same material and of the same thickness on the upper section, and into a leather strip in the same color on the lower section, covering the little finger, giving the RS-C its truly distinctive design. The glove's opening features the new FIVE V-Entrance™ system, with its V-shaped cutout, making for easier on/off. Its topside that combines Spandex™, ventilated leather, and Airprene®, with a synthetic leather palm, make this RS-C a truly effective style for urban riding.

TECHNICAL FEATURES

01. 4 Way Spandex™ construction for elasticity, and leather (topside), perforated for airflow / Synthetic leather (palm) and full grain leather reinforcements at strategic spots for durability

02. Leather little finger construction

03. One-piece visible carbon metacarpal-phalangeal and phalangeal protective shell

04. Hypothenar protective shell (palm slider) in TPR

05. Phalangeal protective mini-shells in TPR

06. Palm reinforcement in synthetic leather, with adhesive print

07. V-Entrance™ system for easier on/off
08. Airprene® cuff for adjustable fit, comfort and ventilation

09. Lycra® finger contours

10. Closure system with TPR + Velcro® flap and synthetic leather pull-tab

11. Reflective elements on the fingers and topside

12. Touch Screen™ system (on index finger) for handling touchscreens without removing gloves.



RED
02212303
XS-07 / S-08 / M-09 / L-10
XL-11 / 2XL-12 / 3XL-13



WHITE / FLUO YELLOW
02212359

WHITE / FLUO ORANGE
02212357



BLACK
02212301

RACING

STREET

CUSTOM

TRAIL _ ADVENTURE

WINTER

HEAT TECHNOLOGY

WOMAN

OFF-ROAD



RS2 EVO

THE SAME, ONLY BETTER.

With the RS2, FIVE makes its expertise available to all, offering an enjoyable everyday glove for all types of two-wheelers, from motorcycles to scooters. A top seller and 2017 winner of the Top Quality Prize from influential Moto Magazine in the summer glove category, this glove got a revamp in 2021. It'll keep its best features, but will feature an updated design, which will include a brand-new ERGO PROTECH® one-piece shell. And it'll also be even more practical, with new features such as the Touch Screen™ system so you can handle electronic devices with your gloves on. Its goat-leather topside, selected for suppleness and perforated for better ventilation, includes a 4-Way Spandex™ comfort zone, for optimal riding pleasure. The wrist zone will come in Neoprene™, for excellent support that won't slow you down. The RS2's level of ventilation will be just as efficient as ever, and its "second-skin" comfort, perfect for everyday wear, are back for you to enjoy. Even more attractive, even better equipped...the new RS2 is already setting the new standard in its category.

TECHNICAL FEATURES

01. (Topside) Full-grain goat leather construction for suppleness, perforated for ventilation / 4-Way Spandex™ / Neoprene™

02. (Palm) Synthetic leather with goat-leather reinforcement on the hypothenar

03. ERGO PROTECH® one-piece metacarpophalangeal PVC protective shell underneath the leather

04. FIVE protective logos in TPR on the metacarpals

05. Mini-protective shells in soft TPR on the index and middle fingers

06. Hypothenar protective shell (palm slider) in TPR
07. Protective reinforcements in 3 mm foam underneath the leather on the ring and little fingers

08. Leather accordion comfort gussets on the thumbs

09. Fourchettes (finger contours) in stretch Nylon

10. Neoprene™ wristband for enhanced comfort

11. TPR + Velcro® tab closure system and Lycra® gusset

12. Pull'N'Ride leather pull tab

13. Touch Screen™ system for handling electronic devices, on the index finger



BLACK / RED
02211018
XS-07 / S-08 / M-09 / L-10
XL-11 / 2XL-12 / 3XL-13



BLACK / KAKI
02211095



BROWN
02211007



BLACK
02211001

RACING

STREET

CUSTOM

TRAIL _ ADVENTURE

WINTER

HEAT TECHNOLOGY

WOMAN

OFF-ROAD

RS3 EVO



RS3 EVO



THE MULTIPURPOSE URBAN GLOVE.

Totally redesigned for 2022 the RS3 EVO is meant to replace one of the most popular FIVE gloves, the RS3. Made for multipurpose urban use and designed for riders looking for a short, functional, comfortable, and affordable glove that offers a reasonable level of protection, the RS3 EVO is a basic you just can't live without, whether as your go-to glove or as a spare for a passenger. It features the very latest FIVE ERGO PROTECH® ergonomic protective shells for greater comfort and effectiveness, and its 4-Way Spandex™ topside construction gives it both excellent fit and major flexibility. Easy to slip on and take off, it's perfect for riders zipping all over town throughout the course of a day. It will be your faithful companion on your everyday urban rides at the controls of any type of machine. Could the RS3 EVO be setting the new standard in its category? All you have to do is try it, and you'll know it's true.



BLACK / RED
02221618
XS-07 / S-08 / M-09 / L-10
XL-11 / 2XL-12 / 3XL-13



TECHNICAL FEATURES

01.

4-Way Spandex™ construction (topside) for flexibility / Synthetic leather (palm) for durability
02.

One-piece FIVE ERGO PROTECH® TPR metacarpo-phalangeal protective shells under fabric
03.

TPR hypothenar protective shell (palm slider)
04.

One Way Stretch™ fourchettes for perfect fit
05.

Neoprene™ wristband for fit and comfort
06.

3D mesh inserts over the wrist for better ventilation
07.

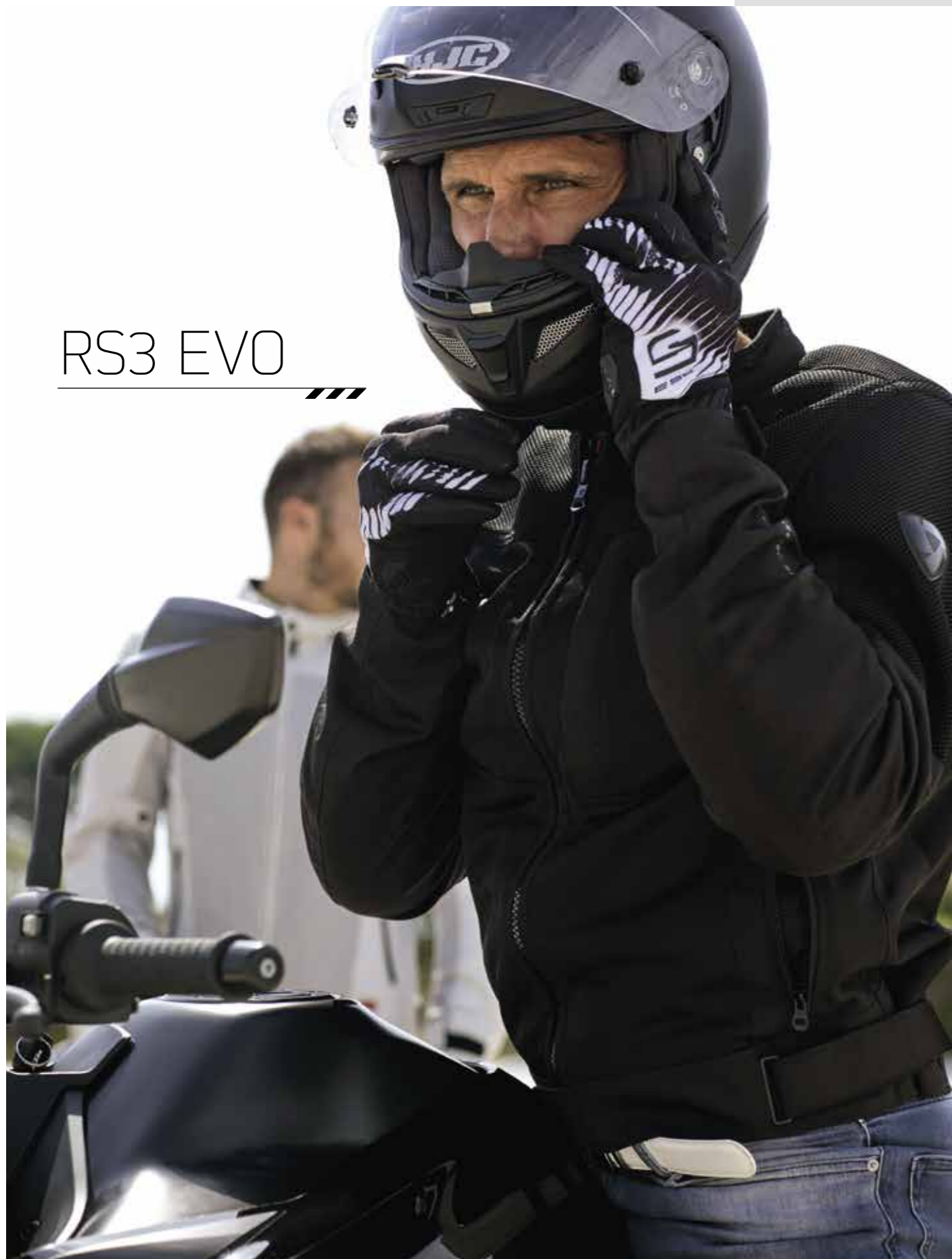
Textured 3D logos and TPR knuckle protective elements
08.

Closure system featuring a Velcro® tab and Pull'N'Ride™ pull tab
09.

Touch Screen™ system (index finger) for handling touchscreen devices



RS3 EVO



BLACK / WHITE
02221619



BLACK / RED
02221618



BLACK / FLUO YELLOW
02221616



KAKI
02221695



BLACK
02221601



- GRAPHICS -
CAMO BLACK
02222401



- GRAPHICS -
UNION JACK BLACK / GOLD
02222497



- GRAPHICS -
SPORT 5 BLACK / RED
02222418



- GRAPHICS -
SKULL BLACK / WHITE
02222419



KID
BLACK / WHITE
02221919

RACING

STREET

CUSTOM

TRAIL _ ADVENTURE

WINTER

HEAT TECHNOLOGY

WOMAN

OFF-ROAD



GLOBE



THE UNIVERSAL GLOVE WITH PROTECTIVE SHELLS.

The Globe provides the minimum essential protection you need for any two-wheeled activity (motorbike, scooter, bicycle). Its basic nature makes it pleasant to wear, and it has rapidly become the benchmark basic, universal glove. It comes in black, for the classicists among us, and in color or replica versions for bolder riders. Lightweight, but still including PU protective shells on the topside and the palm, it offers a satisfying balance between enjoyable wear and safety. This is a simple, practical, and ultra-affordable glove.

TECHNICAL FEATURES

01. Polymesh™ construction (topside) for comfort/ Synthetic leather (palm) for durability

02. One-piece TPR metacarpal-knuckle and knuckle protection underneath the fabric

03. TPR protective palm slider shell

04. Synthetic leather hypothenar muscle reinforcement

05. Lycra® fourchettes for optimal fit
06. Airprene® cuff for adjustment, comfort and ventilation

07. Closure system with TPR tab + Velcro® and synthetic leather on/off pull tab



BLACK / FLUO YELLOW
02211516
XS-07 / S-08 / M-09 / L-10
XL-11 / 2XL-12 / 3XL-13



BLACK / RED
02211518



BLACK
02211501



RACER
02211569

RACING

STREET

CUSTOM

TRAIL _ ADVENTURE

WINTER

HEAT TECHNOLOGY

WOMAN

OFF-ROAD

X-RIDER^{WP}



THE SHORT, WEATHERPROOF GLOVE FOR GLOBETROTTERS AND SPORT RIDERS.

Revamped in 2021, the last generation of X-Rider is proving even more versatile than its predecessor. Though it keeps gaining fans among globe trotters, who consider it the perfect glove to take them to the ends of the earth, the latest X-Rider will also be ideal for more sporty use (as demonstrated by the accordion tie between the ring and little fingers, a racing-glove detail), or even for urban riding; and it promises to excellently fulfill its role at the controls of a roadster. Weatherproof and breathable, with its new 5_DRYTECH™ membrane, technical, mid-length, so it's not too bulky, focused on a superb comfort / protection / durability ratio, the X-Rider commands respect. Tough, and characterized by its heat-molded cuff protection and its new visible metacarpal-phalangeal ERGO PROTECH® PVC carbon style shell, it retains an adventurous look. With its digital pittards leather palm to maintain optimal grip, even in driving rain, the X-Rider is designed for those who ride everywhere, often, and in all kinds of weather.



BLACK
02212501
XS-07 / S-08 / M-09 / L-10
XL-11 / 2XL-12 / 3XL-13



BLACK / FLUO YELLOW
02212516



TECHNICAL FEATURES

01.

Combined full-grain cowhide construction for durability and goatskin for suppleness (topside) / Goatskin and digital pittards leather for grip (palm)
02.

5_DRYTECH™breathable, weatherproof membrane
03.

Bemberg™ internal comfort lining
04.

Forearm protection featuring a wide, semi-soft TPR shell
05.

Visible one-piece ERGO PROTECH® PVC carbon look protective shell
06.

External knuckle protection with memory foam underneath the leather
07.

TPR protective palm slider shell
08.

Closure system with leather + Velcro® tab and leather on/off pull tab
09.

Clear Vision Pad™ to wipe off helmet screen while riding
10.

Touch Screen™ system for handling touchscreens without removing gloves





STOCKHOLM GTX



**MID-LENGTH MID-SEASON GLOVE
100% WEATHER-PROOF.**

Designed for city and suburban use, ideal for riding in bad weather in spring or autumn, or even in not-too-severe winters. With the added bonus of excellent value for money in terms of effectiveness. GORE-TEX® membrane for waterproofing and Thinsulate™ 150g lining to protect against the cold. The Stockholm knows how to be soft, comfortable, and precise in terms of steering sensitivity. Its ribbed cuff gusset to avoid heat loss and its piping and retro-reflective inserts offer improved nighttime visibility.

TECHNICAL FEATURES

01.

Nylon windbreaker fabric (topside) / Full-grain goatskin (palm) construction
02.

Internal weatherproof GORE-TEX® membrane
03.

Bemberg™ internal comfort lining
04.

Thinsulate™ 150 g thermal insulation
05.

PVC metacarpal-knuckle protective shells underneath the nylon
06.

TPR protective palm slider shell
07.

Full-grain goatskin palm reinforcement
08.

Cuff insulation with stretch ribbed fabric
09.

Closure system with a leather and Velcro® tab
10.

Touch Screen™ system (on index finger) for handling touchscreens without removing gloves



KAKI
04201695
XS-07 / S-08 / M-09 / L-10
XL-11 / 2XL-12 / 3XL-13



GREY
04201608



BLACK
04200401

	RACING
	STREET
	CUSTOM
	TRAIL _ ADVENTURE
	WINTER
	HEAT TECHNOLOGY
	WOMAN
	OFF-ROAD



URBAN^{WP}



THE LONG URBAN GLOVE THAT'S... WEATHERPROOF.

A recent FIVE design made for urban use (as its name indicates), the Urban WP opts for a long, sleek cuff, to offer its rider maximum protection that can be worn either over or underneath your jacket's sleeve. Here we present its weatherproof version, featuring a 5_DRYTECH™ membrane that allows you to use it when it rains. Compared to short gloves, the Urban WP's style confers a certain elegance and classic look. You'll also feel truly safe, due to its topside one-piece PVC shell underneath the leather, along with its many other protective elements. The accordion gusset on the wristband, coupled with a Velcro® adjustment tab, makes it easy to slip on and adjust to your hand. And finally, the Urban WP features the Touch Screen™ system, which allows you to activate your GPS or smartphone screens. It's so practical not to have to take off your glove to make a call or find your way through the urban jungle.

TECHNICAL FEATURES

- 01. Main structure in goat leather (topside and palm), for suppleness
- 02. Long cuff that includes foam forearm protection
- 03. 5_DRYTECH™ weatherproof / breathable membrane
- 04. One-piece PVC metacarpo-phalangeal protective shell underneath the leather
- 05. Protective foam pads on the index, middle, ring fingers and thumb
- 06. Comfort gussets on the index and middle fingers
- 07. Water-repellent Lycra® fourchettes, to combine flexibility with dryness
- 08. Synthetic leather palm reinforcement for grip
- 09. Synthetic leather reinforcement and TPR protective shell on the hypothenar
- 10. Simple closure featuring a synthetic leather and Velcro® tab
- 11. Touch Screen™ system (on the index finger) for handling electronic devices



BLACK
02212601
XS-07 / S-08 / M-09 / L-10
XL-11 / 2XL-12 / 3XL-13



RACING

STREET

CUSTOM

TRAIL _ ADVENTURE

WINTER

HEAT TECHNOLOGY

WOMAN

OFF-ROAD



BOXER^{WP}



THE PREMIUM, WEATHERPROOF URBAN GLOVE.

Now featuring a brand-new 5_DRYTECH™ breathable / weather-proof membrane, the Boxer is designed for urban and suburban riders looking for a short glove made from top-quality materials to handle the rain and bad weather, essentially in moderate temperatures, because the Boxer is deliberately designed without thermal insulation. Its 5_DRYTECH™ membrane is partially bonded to the lining on the palm zone, so it won't budge. Its comfort-stretch, water resistant topside, paired with a full-grain goatskin palm structure, gives the Boxer premium fit and comfort. While it has you covered in bad weather, it also protects you if you take a spill, with its PVC protective shells underneath the fabric, TPR palm slider, cuff protection, and foam reinforcements on the thumb and fingers. The Touch Screen™ system that lets you use your smart-phone or GPS without taking your gloves off completes the system that allows you to face life in the city with total peace of mind, even in the driving rain.

TECHNICAL FEATURES

01. Weatherproof stretch fabric construction (topside) for weatherproofing and comfort / full-grain goatskin (palm) for suppleness

02. 5_DRYTECH™ breathable, weatherproof membrane

03. Bemberg™ internal comfort lining

04. One-piece PVC metacarpophalangeal protective shell under fabric

05. Hypothenar protective shell (palm slider) in TPR

06. PU GRIP palm reinforcement

07. Lycra® comfort gussets

08. Cuff featuring soft foam protective cushion
09. Reflective print on fingers and wrist for nighttime visibility

10. Quick closure system with flap + Velcro® and synthetic leather pull-tab

11. Touch Screen™ system (on index finger) for handling electronic devices



CAMO ARMY
02212710
XS-07 / S-08 / M-09 / L-10
XL-11 / 2XL-12 / 3XL-13



CAMO GREY
02212724

BLACK
02212701

RACING

STREET

CUSTOM

TRAIL _ ADVENTURE

WINTER

HEAT TECHNOLOGY

WOMAN

OFF-ROAD



RS WP



THE SHORT, LIGHTWEIGHT, WEATHERPROOF MULTI-PURPOSE URBAN GLOVE.

RS WP takes on the role in our Urban range of a short, weatherproof glove that's versatile and practical. Featuring metacarpal protective shells discreetly inserted underneath waterproof fabric, a shell on the palm, and, especially, a weatherproof membrane, it protects its rider just as much from risks in case of a fall as it does from bad weather. The advantage of a short, lightweight glove for urban use is clear: it easily and discreetly blends into your overall look and its reduced bulk makes it truly practical to carry around. It can therefore be your everyday partner, just in case the weather is unreliable, tucked into your bag or at the bottom of a top case.

TECHNICAL FEATURES

01. Weatherproof fabric construction (topside) for weather resistance / Synthetic leather (palm) for durability

02. HIPORA® weatherproof internal membrane

03. Bemberg™ internal comfort lining

04. One-piece TPR Soft metacarpal-phalangeal and phalangeal protective shells under fabric

05. Hypothenar protective shell (palm slider) in TPR

06. Perforated synthetic leather palm reinforcement for improved grip

07. Neoprene™ cuff for adjustability, comfort, and weather resistance
08. Flap + Velcro® and synthetic leather pull-tab closure system

09. Touch Screen™ system (on index finger) for handling touchscreens without removing the glove



BLACK
04191401
XS-07 / S-08 / M-09 / L-10
XL-11 / 2XL-12 / 3XL-13



BLACK / FLUO YELLOW
04201416

BLACK / RED
04201418

RACING

STREET

CUSTOM

TRAIL _ ADVENTURE

WINTER

HEAT TECHNOLOGY

WOMAN

OFF-ROAD



MILANO EVO^{WP}



SIMPLE, UNDERSTATED, AND EFFICIENT.

The Milano, our weatherproof, breathable urban glove designed mainly for mid-season scooter riding, has been completely restyled in 2021. Fully updated, it still retains the characteristics that made its predecessor a real success. It features a protective shell concealed underneath nylon fabric and a leather palm, promising absolute protection. It also features a weatherproof, breathable 5_DRYTECH™ membrane, thus offering a layer of thermal insulation to protect its rider from the cold. Sleek and subtle, the new Milano Evo retains its fashionable look, making it the perfect companion for elegant occasions, worn underneath a raincoat.

TECHNICAL FEATURES

- 01. Synthetic fabric (topside) and full-grain goat-leather (palm side) construction
- 02. PVC metacarpophalangeal protective shells underneath the fabric
- 03. Internal 5_DRYTECH™ weatherproof, breathable membrane
- 04. Thermal-insulating foam
- 05. Memory-foam hypothenar protection underneath the leather
- 06. Leather palm reinforcement
- 07. Closure system with synthetic leather and Velcro® tab
- 08. Touch Screen™ system for handling electronic devices (on the index finger)



BLACK
02212801
XS-07 / S-08 / M-09 / L-10
XL-11 / 2XL-12 / 3XL-13





CUSTOM

CUSTOM IS ABOUT LOVING
THINGS MADE JUST FOR YOU.

Custom culture is the idea of finding that special something made just for you. So, it was logical that FIVE would create a collection of gloves aimed at enthusiasts of custom, vintage and new-retro motorcycles, depending on what you prefer to call it. This is a range where you'll find the glove that matches the style of the motorbike. Beautiful design, high-quality, authentic materials, mainly full-grain leather, chosen for its extreme flexibility and durability, all coupled with an excellent finish, are the hallmarks of the Custom Urban collection. As glove specialists, FIVE offers lots more than normal custom gloves: it has poured all its expertise in terms of fit, comfort and safety into this Custom range.



OKLAHOMA
BEIGE / BROWN

ARIZONA
BLACK



COLORADO
BROWN / BLACK





EN 13594:2015

CALIFORNIA

FOR MEN OF CHARACTER.

This all-leather glove imposes its presence with its cross-stitched detail and quilted look that we usually find on the seats of the most beautiful custom machines. Its wide leather adjustment tab that closes on the top of the cuff breaks with tradition and reinforces the rather manly look of the California. The leather palm reinforcement that extends into an easy on/off pull tab demonstrates our desire to combine beauty with functionality. This is a strong glove, for strong men (with strong bikes).



TECHNICAL FEATURES

- 01. Total full-grain goatskin construction for suppleness (palm and topside)
- 02. Quilted and top-stitched leather metacarpal-knuckle protection
- 03. Hypothenar muscle protection with full-grain cowhide reinforcement panel
- 04. Perforated goatskin palm reinforcement
- 05. FIVE metal insignia
- 06. Closure system with leather + Velcro® tab and leather on/off pull tab



BROWN
03170107
XS-07 / S-08 / M-09 / L-10
XL-11 / 2XL-12 / 3XL-13



BLACK
03170101



RACING

STREET

CUSTOM

TRAIL _ ADVENTURE

WINTER

HEAT TECHNOLOGY

WOMAN

OFF-ROAD



EN 13594:2015

ARIZONA

VINTAGE CULTURE. REINFORCED PROTECTION.

The ARIZONA is a 100% full-grain leather glove with a distinct personality, beautifully combining quilted and perforated leathers, and allying design with protection. It features thick leather reinforcements over-stitched on the edge of the hand, which are not only decorative, but also aimed at protecting the rider's hand in the event of a fall. Closure via a leather tab with a press-stud embossed with FIVE. With its unique character, superb details, and quality materials, it is the very living essence of vintage culture.

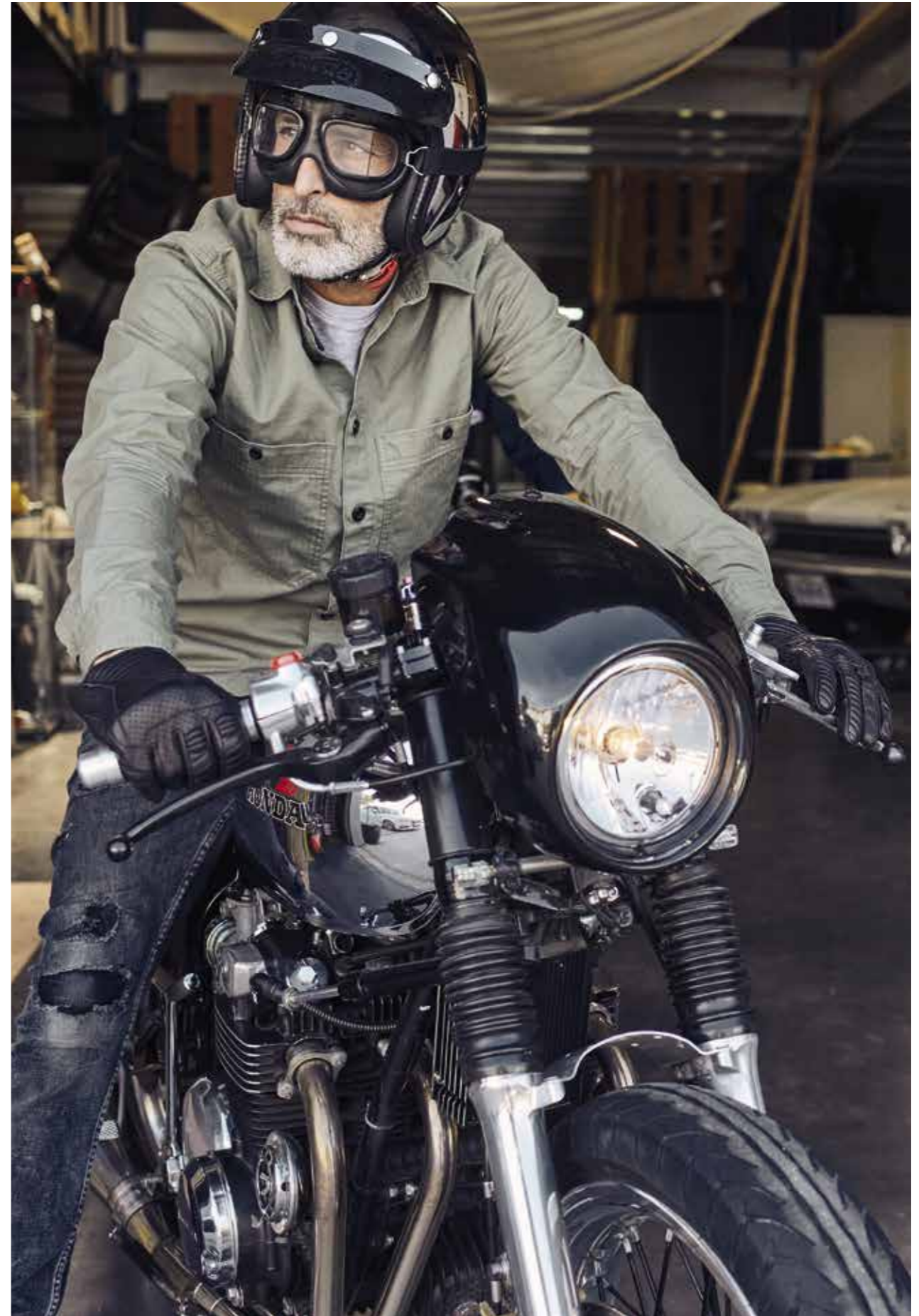


TECHNICAL FEATURES

- 01. Total full-grain goatskin construction for suppleness (palm and topside), perforated for ventilation (topside)
- 02. Metacarpal-knuckle protection with memory foam concealed underneath the leather
- 03. Hypothenar muscle protection with full-grain cowhide reinforcement panel
- 04. Perforated goatskin palm reinforcement
- 05. Leather accordion comfort gussets
- 06. Closure system with leather tab + press-stud and leather on/off pull tab



BLACK
03170301
XS-07 / S-08 / M-09 / L-10
XL-11 / 2XL-12 / 3XL-13



RACING

STREET

CUSTOM

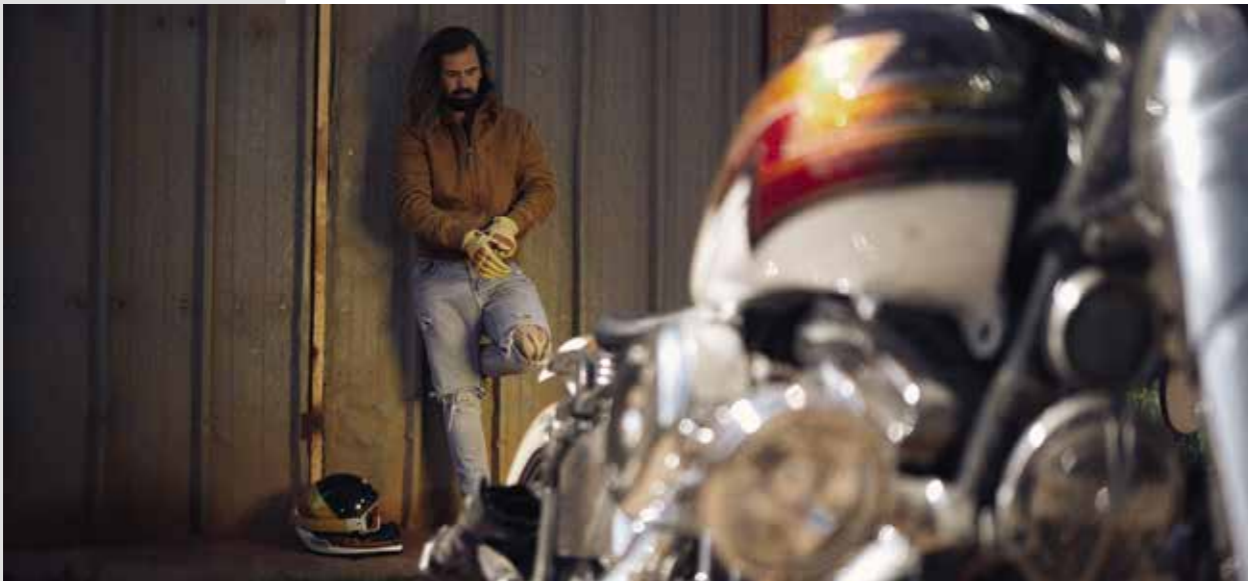
TRAIL _ ADVENTURE

WINTER

HEAT TECHNOLOGY

WOMAN

OFF-ROAD



OKLAHOMA

THE UNIVERSAL CUSTOM GLOVE.

The current “Custom craze” is being fed by several different styles (the Café Racer, Bobber, Vintage, and Neo-Retro trends, among others), which end up blending to create something truly interesting. And so, we wanted to offer a glove that everyone would like, whatever your favorite influence(s) may be. It’s up to you to write your own Oklahoma story...Café-racer fans who ride bikes inspired by ’70s competitive motorcycles will appreciate the touch of racing-glove style: external stitching, a protective flap over the adjustment tab, protective cushioning over the knuckles. Those who favor Custom vintage machines, like a Harley with a rusty tank plate, are sure to like the large, visible topstitching around the piped edges of its short cuff, or its internal lining adorned with rather inspired custom graphics. For those Neo-Retro lovers who are used to combining modern comforts with all the charm of times past, they will undoubtedly notice the smooth, luxurious look of the cowhide, paired with the rough texture of nubuck, giving the Oklahoma its classic appeal. This glove stands at the crossroads of different trends, and, if there’s one aspect that everyone can agree on, it’s the level of protection it offers. So...is the Oklahoma authentic, protective, and truly universal? Definitely!

TECHNICAL FEATURES

01.

Full-grain cowhide construction (palm and topside), for durability
02.

Nubuck palm reinforcement
03.

One-piece PVC metacarpophalangeal protective shell underneath the nubuck
04.

External stitching on the fingers, for optimal fit
05.

Protective foam knuckle reinforcements concealed underneath the leather
06.

Comfort gussets on the wrist band
07.

FIVE Custom logo embossed on the leather
08.

Internal cuff lining enhanced with custom graphics
09.

Decorative top-stitching around the piped cuff edges
10.

Leather and Velcro® closure system and adjustment tab underneath a protective flap
11.

“Feel your ride” inscription concealed underneath the protective flap
12.

Touch Screen™ system on the index finger, for handling electronic devices



BEIGE / BROWN
03211253
XS-07 / S-08 / M-09 / L-10
XL-11 / 2XL-12 / 3XL-13



BROWN
03211207

BLACK
03211201

RACING

STREET

CUSTOM

TRAIL _ ADVENTURE

WINTER

HEAT TECHNOLOGY

WOMAN

OFF-ROAD

KANSAS



OFF-ROAD

WOMAN

HEAT TECHNOLOGY

WINTER

TRAIL _ ADVENTURE

CUSTOM

STREET

RACING



KANSAS

OUR MOST PROTECTIVE CUSTOM GLOVE.

The Kansas stands out as our most protective custom glove. Featuring a one-piece metacarpal protective shell inserted underneath the leather, and several reinforcements on exposed zones, it offers extra comfort and exceptional adjustability and touch sensitivity on the controls, due to, among other elements, its outer stitching. Its countless details, comfort gussets and top-stitching, make it a piece that leather lovers who want to look good will appreciate, without neglecting their safety. The Kansas marvellously combines classic style with a modern touch, since its index finger hosts the Touch Screen™ system that allows you to handle touchscreens without removing your glove.

TECHNICAL FEATURES

- 01. Total full-grain goatskin construction for suppleness (palm and topside), perforated for ventilation (topside)
- 02. One-piece PVC metacarpal-knuckle protective shell underneath the leather
- 03. Outer stitching on the fingers for optimal fit
- 04. Closure and adjustment system with zipper + Velcro® tab and on/off pull tab
- 05. Leather accordion comfort panels on fingers and thumb
- 06. Accordion leather + Elastic cuff for greater comfort
- 07. Hypothenar muscle protection with full-grain cowhide reinforcement panel and memory foam featuring embossed logo
- 08. Touch Screen™ system on index finger for handling touchscreens.



GOLD
03211097
XS-07 / S-08 / M-09 / L-10
XL-11 / 2XL-12 / 3XL-13



BROWN
03191007

BLACK
03191001

RACING

STREET

CUSTOM

TRAIL _ ADVENTURE

WINTER

HEAT TECHNOLOGY

WOMAN

OFF-ROAD



MUSTANG

PURE SIMPLICITY EXTRA SHORT.

This glove surprises us with its minimal esthetic and ultra-compact look, due to its super-short cuff. The perforated leather that its topside is made of, without seams nor additional insets, helps create the understated, classic look of this glove. Though extremely elegant, with its shell underneath the leather, the Mustang offers real protection. Its short cuff includes a Lycra® comfort gusset for excellent support and total freedom of movement. Wearing this glove, we feel truly free... like a Mustang.

TECHNICAL FEATURES

- 01. Full-grain goatskin construction for suppleness (topside and palm)
- 02. One-piece PVC metacarpal-knuckle protective shell underneath the leather
- 03. Hypothenar muscle protection with full-grain cowhide reinforcement panel
- 04. Closure system with leather + Velcro® tab

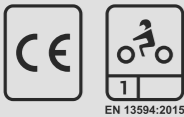


BLACK
03170701
XS-07 / S-08 / M-09 / L-10
XL-11 / 2XL-12 / 3XL-13





COLORADO



BACK TO BASICS.

When it comes to all things Custom, we often only remember the essentials, the basics of motorcycling: a chassis, an engine, the controls, and two wheels are all we need to be happy. The same thing applies to the Colorado. In other words, when less truly becomes more... Less panels, less stitching, less protective elements, for greater comfort and control sensitivity. Inspired by a minimalistic approach that's straight out of Japan, the Colorado reminds us of the automotive gloves of the 1960s. The suppleness of full-grain leather invites you to ride your bike subtly and skillfully. Its second-skin smoothness, enhanced by its distinctive construction (with middle and ring fingers separate from the rest of the structure, and one long outer seam around the fingers), will make you feel like you're wearing nothing at all. But the sturdiness of the cowhide will save your hands if you happen to take a spill. Its adjustment tab adorned with a metallic grommet positioned over the wristband adds to the comfort and sleek look of the Colorado. This is a glove you'll choose more for its feeling of freedom than for the protection it provides, there no doubt about it.

TECHNICAL FEATURES

- 01. Full-grain cowhide construction (topside and palm), for durability
- 02. Quilted foam hypothenar reinforcement underneath the leather on the palm side
- 03. Distinctive construction, with the middle and ring fingers separate from the rest of its main structure
- 04. One long outer seam on the fingers and thumb, for optimal fit
- 05. Multiple leather perforations on the top of the fingers, for style and ventilation
- 06. Metallic grommet and FIVE Custom embroidered label
- 07. Comfort gussets on the inside of the wrist
- 08. Topside closure and adjustment system, featuring a leather and Velcro® tab



BROWN / BLACK
03211334
XS-07 / S-08 / M-09 / L-10
XL-11 / 2XL-12 / 3XL-13



BEIGE / BROWN
03211353

BLACK
03211301

RACING

STREET

CUSTOM

TRAIL _ ADVENTURE

WINTER

HEAT TECHNOLOGY

WOMAN

OFF-ROAD



IOWA 66

THE QUINTESSENTIAL CUSTOM GLOVE.

The IOWA 66 is designed to reflect the very essence of a custom-vintage glove. Fans of custom style sometimes convert work gloves for riding use, but the problem is that they don't fulfil any of the essential characteristics needed when driving a motorcycle, either in terms of comfort or safety. FIVE now offers a style inspired by these gloves that are highly popular with custom addicts yet featuring specs that are unique to steering a two-wheeled vehicle. And this makes all the difference. Crafted in particularly durable full-grain cowhide that offers a suppleness that's rare for this type of glove, the IOWA 66 stands out from the pack with its extreme comfort and a fit that's head-and-shoulders above the rest, notably due to its thumb construction inherited from our experience in racing. Beneath its seemingly minimalist appearance, it features all the best that FIVE has to offer in terms of quality fit and control sensitivity, as well as the attention to detail typical of our designs. Everything has been envisioned for this apparently minimal glove to offer you maximum enjoyment (and authenticity) when you're at the controls.



BRUSH GOLD
03201125
XS-07 / S-08 / M-09 / L-10
XL-11 / 2XL-12 / 3XL-13



BLACK
03211101



TECHNICAL FEATURES

- 01. Full-grain cowhide construction (topside and palm) for durability, while offering major suppleness
- 02. Intentional patinated effect
- 03. External stitching on the fingers for enhanced comfort
- 04. 3 top-stitches on the metacarpals
- 05. Engraved FIVE Gloves Custom logo
- 06. Thumb construction that avoids wrinkling on the palm
- 07. Leather and Velcro® tab closure





CLASSIC^{WP}



ALREADY A CLASSIC.

The Classic certainly stands out with its classic flair, but also because it can stand up to bad weather, and due to the extreme suppleness of its lambskin. It features a HIPORA® membrane for weatherproofing, and 150g Thinsulate™ lining to protect against the cold. The palm is protected with double-thickness leather reinforcement. Perforated synthetic leather reinforcement enhances grip. This glove is ultra-practical and easy to slip on, with its ribbed cuff that blocks cold air from getting into the glove. Simplicity, comfort, elegance... that's all it takes to make the Classic a city riding classic when the weather is unpredictable, cold, and wet.



TECHNICAL FEATURES

- 01. Full-grain sheepskin construction (topside and palm)
- 02. Internal weatherproof HIPORA® membrane
- 03. Bemberg™ internal comfort lining
- 04. Thinsulate™ 150g thermal insulation
- 05. Hypothenar memory foam panel underleather protection
- 06. Perforated synthetic leather palm reinforcement for improved grip
- 07. Cuff insulation with stretch ribbed fabric
- 08. Leather on/off pull tab



BROWN
04170507
XS-07 / S-08 / M-09 / L-10
XL-11 / 2XL-12 / 3XL-13



BLACK
04170501



KANSAS^{WP}



THE CUSTOM GLOVE THAT'S ULTRA-PROTECTIVE... EVEN FROM THE RAIN.

Because you may want to ride in Vintage or Neo-Retro style even when the weather's bad, FIVE now offers a weatherproof mid-season version of its top-selling Custom style. Based on our most protective Custom glove, the Kansas WP echoes all the characteristics of the Kansas, with the addition of a weatherproof, breathable 5_DRY-TECH™ internal membrane to keep your hands dry when it rains. Featuring a one-piece metacarpal protective shell inserted underneath the leather, and numerous reinforcements at exposed points, the Kansas WP offers extreme protection. It also offers an optimal level of comfort, fit, and control sensitivity for a weatherproof glove, due to, among other factors, its external stitching. It marvelously combines a classic spirit with modern details, since its index finger hosts the TouchScreen™ system that lets you handle device screens without taking your glove off. The look and the weatherproof nature of the Kansas WP are sure to delight fans of bold machines, who never say no to a ride, even when the weather looks unpredictable.

TECHNICAL FEATURES

- 01. 100% full-grain goat-leather construction, for suppleness (topside and palm)
- 02. One-piece PVC metacarpophalangeal protective shell underneath the leather
- 03. External stitching on the fingers, for optimal fit
- 04. 5_DRYTECH™ weatherproof, breathable membrane
- 05. Internal comfort lining
- 06. Closure and adjustment system featuring a zipper + Velcro® flap and on/off pull-tab
- 07. Leather accordion comfort gussets on the fingers and thumb
- 08. Leather accordion + elastic wristband, for added comfort
- 09. Hypothenar protection from a full-grain goat-leather and memory-foam reinforcement panel that includes an embossed logo
- 10. Touch Screen™ system on the index fingers, for handling electronic devices



BLACK
03211401
XS-07 / S-08 / M-09 / L-10
XL-11 / 2XL-12 / 3XL-13

TRAIL ADVENTURE

EXPLORE THE WORLD
WITHOUT LEAVING
YOUR COMFORT ZONE

The world is such a big place, and the planet is so beautiful, that it would be tempting to set off on a voyage to discover its many wonders. With some machines, you could easily gobble up the miles, on the asphalt or on dirt tracks, exploring every last nook and cranny of it. Riding long-distance, through different lands and varied terrain, requires first-class equipment. Gloves from the TRAIL ADVENTURE collection prove to be as multifunctional, comfortable, and tough as the motorcycles made for extensive travel. These gloves offer unprecedented technical solutions that allow them to traverse big country, just as they can be effective for every day. Because you don't necessarily have to ride for thousands of miles (or kilometers) to fully enjoy the virtues of our TRAIL ADVENTURE gloves. Sometimes, adventure and escape start at the end of your street...or just in your head.



Jean Michel BAYLE "JMB 111" - TFX1 GTX
Supercross, motocross & road racing Legend.
Honda ambassador, traveling the world on Honda Africa Twin.



TFX1 GTX
SAND / BROWN

RACING

STREET

CUSTOM

TRAIL _ ADVENTURE

WINTER

HEAT TECHNOLOGY

WOMAN

OFF-ROAD

TFX2 WP
SAND / BROWN





TFX2 WP
SAND / BROWN

RACING

STREET

CUSTOM

TRAIL _ ADVENTURE

WINTER

HEAT TECHNOLOGY

WOMAN

OFF-ROAD



TFX1 GTX

OFF-ROAD

WOMAN

HEAT TECHNOLOGY

WINTER

TRAIL _ ADVENTURE

CUSTOM

STREET

RACING



TFX1 GTX



THE ULTIMATE TRAIL ADVENTURE GLOVE!

When you head off to into uncharted territory at the handlebar of a machine made to devour thousands of miles, it's only right to expect the finest in comfort, safety, and durability. This is exactly what you'll get from the TFX1, a brand-new style in the FIVE Trail Adventure range and our premium offering in this category. It includes materials and a design that make it the ultimate in grand touring equipment. Its digitalized full-grain goat leather palm construction, and a topside that combines water-repellent stretch fabric and RipStop, give it a level of comfort and toughness that are essential for long days on the road. Exceptional fit, a true FIVE hallmark, is in full effect here. Its GORE-TEX® breathable/weatherproof membrane bonded to the palm liner and leather shell keeps you perfectly protected from bad weather (including driving rain), with maximum sensitivity at the controls. The TFX1 has all you need in terms of protective elements, without hindering your movements when you ride, including a large SuperFabric® insert inside the palm, all the way through to the outer fingers, to protect you if you take a spill, without interfering with proper grip, or its new ERGO PROTECH® shell in semi-soft TPR. Its dual-fastening system with a V-shaped band and Velcro® allows for ultra-precise adjustment over or underneath the sleeve of your jacket. Featuring Clear Vision Pad™ visor-cleaning and Touch Screen™ systems, the TFX1 always keeps you in control of your navigational devices. Its technical qualities and cutting-edge design are sure to satisfy those who can't imagine heading off on a long road trip without the right equipment... and who want nothing less than the very best!

TECHNICAL FEATURES

01.

Topside: Water-repellent stretch and RipStop™ fabric construction for weatherproofing and comfort
02.

Palm: full-grain goat leather for suppleness, and digitalized leather reinforcement at contact points for optimal grip in wet weather, and wide SuperFabric® protective reinforcement that covers the thenar eminence and the hypothenar
03.

GORE-TEX® Grip™ breathable, weatherproof membrane molded to the lining on the palm side
04.

ERGO PROTECH® one-piece metacarpophalangeal protective shell in soft TPR. Memory-foam and TPR reinforcement on the back of the hand
05.

Phalangeal protective elements in soft TPR on the index and middle fingers
06.

Forearm protection with a thick, semi-soft TPR 3D shell
07.

Wide SuperFabric® reinforcement on the little and ring fingers
08.

Anti-twist accordion strap between the little and ring fingers so your fingers don't get pulled apart if you fall (a FIVE innovation)
09.

Comfort gusset on the index and middle-finger joints
10.

Outside seaming on the fingers
11.

Memory-foam reinforcements on the thumb and palm
12.

Silicone print on the palm for improved grip
13.

Inner lining featuring "map"-style silk-screened design
14.

Stretch V-shape and Velcro® dual-construction closure system with gripper tab, one on the wrist and the other on the sleeve, for perfect fit
15.

"Pull & Ride" tab for easy on/off
16.

3D reflective patches
17.

Clear Vision Pad™ visor-cleaning system on the left-hand side
18.

Touch Screen™ system (index finger and thumb) for handling electronic devices



SAND / BROWN
05210443
XS-07 / S-08 / M-09 / L-10
XL-11 / 2XL-12 / 3XL-13



FLUO YELLOW / GREY
05210492

BLACK / GREY
05210437

RACING

STREET

CUSTOM

TRAIL _ ADVENTURE

WINTER

HEAT TECHNOLOGY

WOMAN

OFF-ROAD



TFX2 WP



FOR FARSIGHTED ADVENTURERS.

The TFX2 is made for adventurers who leave nothing to chance. And, in particular, for those who demand a protective and comfortable glove that allows them to ride worry-free on any type of road, or face anything that Mother Nature can throw at them. Because when you set off for adventure, you may set off under bright sunshine, and finish the day in the driving rain. With its water-repellent, laminated fabric construction and its 5_DRYTECH™ weatherproof/breathable membrane, it offers unparalleled dryness, while allowing for a healthy evaporation of perspiration, which often happens when you ride hard on unpaved tracks. The TFX2 offers many details that are essential for long rides, like the Clear Vision Pad™ visor-cleaning system, or the Touch Screen™ electronic device-handling system, which allows you to find your way easily using your GPS or smartphone, without taking your glove off. And we haven't skimped on protection here, either, with its PVC shell and numerous reinforcements, on the topside, and its wide Kevlar® panel on the palm side, covering from the base of the hand all the way up to the hypothenar, under which three foam elements are inserted, for comfort. The palm also features a Digital PU reinforcement for impeccable handlebar grip when it rains. Comfortable, lightweight, and tough, both on falls and on rainstorms, the TFX2 will be there, ready to take on any adventure.



SAND / BROWN
05210543
XS-07 / S-08 / M-09 / L-10
XL-11 / 2XL-12 / 3XL-13



BLACK / GREY
05210537



TECHNICAL FEATURES

- | | |
|--|---|
| 01. Stretch, water-repellent fabric construction (topside), for dryness and comfort / Full-grain goat leather (palm), for suppleness | 09. Digital PU palm reinforcement, for better grip on the handlebars |
| 02. 5_DRYTECH™ weatherproof, breathable membrane | 10. Dual closure system (wristband and cuff) using an elastic strap and Velcro® |
| 03. One-piece PVC metacarpo-phalangeal protective shell underneath the fabric / Window-panel construction | 11. Adjustment tab concealed underneath a Kevlar® panel |
| 04. Soft TPR index and middle-finger knuckle protection | 12. Retro-reflective fabric on the wristband |
| 05. Index and middle-finger comfort gussets, with reflective inserts | 13. Lycra®-style fourchettes (between the fingers) |
| 06. Protective foam reinforcement on all knuckles | 14. Clear Vision Pad™ visor-cleaning system on the left-hand side |
| 07. Forearm protection from a cuff with integrated memory foam | 15. Touch Screen™ system (on the index finger) for handling electronic devices |
| 08. Wide Kevlar® reinforcement, from the base of the hand, all the way up to the hypothenar | |



TFX3

THE SHORT GLOVE FOR LONG TRACKS, EITHER PAVED OR GRAVELED.

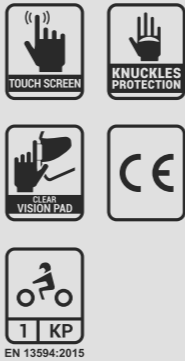
Another asset in our Trail Adventure range, the TFX3 is a small, lightweight, short glove that won't weigh you down, perfect for taking on all types of road trips or rides when the weather's fine. Protective and comfortable, it boldly shows off its adventurous spirit with its elegant look and meticulously designed technical specs. The Clear Vision Pad™ and Touch Screen™ systems for navigating comfort, Digital PU insets on the palm and the thumb for grip, a wide 2-Way Spandex™ strip on the topside for flexibility, ERGO PROTECH® TPR shells and Kevlar® reinforcement for protection, and a goatskin palm for suppleness... the TFX3 has everything to make it your perfect companion. And because you can never be completely sure there won't be some scattered showers, especially in the summer, it even features, on its topside, coated, water-repellent stretch fabric that makes the drops slide right off. And we haven't even mentioned its weatherproof qualities, almost like it had a membrane; we could call it water-resistant, enough to protect you from unexpected light rain. The TFX3: all the advantages of a short, lightweight glove to venture out on the track in summertime, whether you hit the road or ride on gravel.



BLUE / RED
05210696
XS-07 / S-08 / M-09 / L-10
XL-11 / 2XL-12 / 3XL-13



BLACK / GREY
05210637



TECHNICAL FEATURES

- 01. Water-repellent stretch fabric (upper) construction / Full-grain goatskin (palm) for suppleness
- 02. Dual soft-TPR ERGO PROTECH® metacarpo-phalangeal protective shell.
- 03. 2-Way Spandex™ panel for flexibility
- 04. Ring and pinky finger knuckle protection in Soft TPR
- 05. Foam protective reinforcements on all knuckles on the outer fingers
- 06. Kevlar® reinforcements on the hypothenar muscle
- 07. Digital PU reinforcement for enhanced grip on the handlebars
- 08. Quick-close Velcro tab system
- 09. Reflective fabric on the wrists
- 10. Lycra®-style fourchettes (between the fingers)
- 11. Clear Vision Pad™ screen-cleaning system on the left hand
- 12. TouchScreen™ system (index finger) for using touchscreen devices





TFX3 AIRFLOW



FOR A BREATH OF FRESH AIR.

A ventilated version of the TFX3, the TFX3 Airflow qualifies as a small, short, lightweight, and thus, non-bulky glove that's perfect for all types of road trips or treks in dry, warm weather. It naturally echoes the characteristics of the TFX3, though with materials designed to optimize airflow. Both protective and comfortable, it also offers an adventurous look. With its Touch Screen™ system for navigational comfort, a Digital PU panel on the palm and thumb for better grip, a wide 3D Mesh band on its topside for ventilation, ventilated ERGO PROTECH® TPR shells and Kevlar® reinforcements for protection, and a palm in goat leather for suppleness, perforated for airflow, the TFX3 Airflow has everything to make it your perfect travel companion, whenever the mood strikes to... get some fresh air.

TECHNICAL FEATURES

01.

Mixed fabric and honeycombed 3D Mesh construction (topside), for ventilation and comfort / Full-grain goat leather (palm) for suppleness, perforated for airflow
02.

Dual ventilated FIVE AirGO PROTECH® soft-TPR metacarpo-phalangeal protective shells
03.

Ring and pinky finger knuckle protection in Soft TPR
04.

Foam protective reinforcements on all knuckles on the outer fingers
05.

Kevlar® reinforcements on the hypothenar muscle
06.

Digital PU reinforcement for enhanced grip on the handlebars
07.

Quick-close Velcro tab system
08.

Reflective fabric on the wrists
09.

Airmesh fourchettes (between the fingers)
10.

TouchScreen™ system (index finger) for using touchscreen devices



SAND / BROWN
05210743
XS-07 / S-08 / M-09 / L-10
XL-11 / 2XL-12 / 3XL-13



GREY / FLUO YELLOW
05210780

BLACK / GREY
05210737

RACING

STREET

CUSTOM

TRAIL _ ADVENTURE

WINTER

HEAT TECHNOLOGY

WOMAN

OFF-ROAD

TFX4





TFX4



FOR NEW ADVENTURERS.

The TFX4 represents the entry-level style in the FIVE Trail-Adventure range...in every sense of the word! Accessible, because it's inexpensive, easy to wear, and because it meets all your basic needs for paved or dirt-road use. Lightweight, comfortable, and sleek, it is nevertheless quite protective, with its dual ERGO PROTECH® soft shell and wide Kevlar® panel covering nearly half of the palm, made of synthetic leather. Indeed, the TFX4 features no elements of animal origin, to the delight of vegan adventurers. A silicone print on the index and middle fingers improves your grip on the controls in wet conditions. The use of water-repellent fabric on the zone around the protective shells allows the water to slide over this area, in case you get splashed when you cross a river or get peppered by unexpected light rainfall. The TFX4 is, admittedly, not weatherproof, but this makes it even more versatile. This is a glove you'll reach for when you want to travel light, yet it has so many possible uses. From a ride on a sun-drenched road, to a jaunt on a gravel run in much less predictable circumstances, the TFX4 is always ready to head off for adventure.

TECHNICAL FEATURES

01.

Mixed stretch, water-repellent fabric and 4-way Spandex™ construction (topside)
02.

Synthetic leather palm
03.

Dual soft-TPR ERGO PROTECH® metacarpophalangeal protective shell
04.

Wide Kevlar® reinforcement, from the base of the hand all the way up to the hypothenar
05.

Velcro® closure tab and base of the thumb in Airprene® fabric, offering both support and ventilation
06.

Lycra®-style fourchettes (between the fingers)
07.

Touch Screen™ system (on the index finger) for handling electronic device screens
08.

Anti-slip silicone print on the index and middle fingers, for better grip on the controls
09.

Deflector flap in retro-reflective fabric on the top of the hand
10.

Heat-welded FIVE sonic logos that act as protective elements



BROWN
05220807
XS-07 / S-08 / M-09 / L-10
XL-11 / 2XL-12 / 3XL-13



BLUE / RED
05210896

BLACK / RED
05220818



BLACK / FLUO ORANGE
05220815

BLACK
05210801

RACING

STREET

CUSTOM

TRAIL _ ADVENTURE

WINTER

HEAT TECHNOLOGY

WOMAN

OFF-ROAD

WINTER

ENJOY RIDING
IN COLD WEATHER

In the winter, more than any other time of the year, riding requires serious steering skills. The slippery street and road surfaces mean that ugly surprises await you at every turn. The wind and the extra-low temperatures assault your extremities, starting with your hands, and can affect your reflexes. So, winter calls for specially designed and adapted equipment. The effectiveness of a winter glove lies not only in its thickness, but in a plethora of details that make a difference once you start riding in the cold. This is exactly what we offer in our winter range. It includes a glove for every circumstance, and on each and every one, we aim for a perfect balance: quality materials / thermal insulation / weatherproofing / comfort / steering sensitivity / protection.



WFX1
EVO WP
BLACK





WFX
PRIME
GTX
BLACK

WFX PRIME^{GTX}



WFX PRIME GTX



THE NEW-GENERATION WINTER GLOVE.

With the WFX Prime, FIVE offers real innovation, introducing its first heat-sealed, seamless glove, for total weatherproofing. The construction of this premium winter glove has a truly modern feel. Our use of cutting-edge materials, such as Soft-Shell construction, a GORE-TEX® Grip™ membrane, and Primaloft® Gold ultra-high-performance, water-repellent thermal insulation has made for a weatherproof, warm winter glove that's light on bulk. It also offers unparalleled control sensitivity for a winter glove, with any bulk contained around the hand area, and exceptional dynamic and thermal qualities so you can fearlessly face the storms and the cold. Because in winter, it's easy to take a spill when the temperatures drop, the WFX Prime features top-of-the-line protective elements, such as the new ERGO PROTECH® one-piece shell or the large panel in SuperFabric®, a heavy-duty fabric that contains Epoxy resin microbeads covering most of the palm zone, all the way up to the outer fingers. These elements protect you without slowing you down, since it's crucial to have total freedom of movement in the fingers and stay alert at the controls when you ride in wintertime conditions. And so, with all this mind, we proudly present the WFX Prime: all the advantages of a lightweight, supple glove, with total warmth as a bonus.



BLACK
07212201
XS-07 / S-08 / M-09 / L-10
XL-11 / 2XL-12 / 3XL-13



TECHNICAL FEATURES

01. Topside: construction in Soft Shell fabric

02. Palm: full-grain goat leather for suppleness, with a digitalized rubber reinforcement at the contact point for optimal grip in wet weather, and a wide SuperFabric® protective reinforcement covering the thenar eminence and hypothenar, lined in memory foam

03. GORE-TEX® Grip™ breathable, weatherproof membrane that molds to the shape of the palm lining

04. Primaloft® Gold 170g water-repellent thermal topside insulation (equivalent to double its weight at our competitors) and Primaloft® Grip Control 60g on the palm side

05. Seamless heat-sealed construction for optimal weatherproofing

06. ERGO PROTECH® one-piece metacarpophalangeal protective shell in heat-sealed soft PVC inserted underneath the Soft-Shell fabric
07. Over Size Cuff System: adjustable cuff system. This allows you to adjust the cuff around your jacket's sleeve and includes a weatherproof YKK zipper

08. Dual cuff and wrist closure system, with a large digital rubber and Velcro® tab. Wrist-fastening strap with gripper tab in TPR, secured underneath a leather flap

09. Reflective logo embellishments and textured inserts

10. Memory-foam and TPR reinforcement on the thumb, ring, and little fingers

11. Comfort gusset at the joints and on the wrist

12. Bemberg™ internal comfort lining for more softness

13. Weatherproof, anti-drip cuff lining

14. Clear Vision Pad™ visor-cleaning system on the left-hand side

15. Touch Screen™ system (index finger) for handling electronic devices



WFX TECH GTX



STEERING PRECISION FOR WINTER.

The WFX Tech is a winter glove... that's technical, as its name indicates. Its focus is on fit and steering precision for road and suburban riding. Its topside construction combines Neoprene™, nylon, and leather, for perfect resilience in bad weather. Leather palm with digital pittards reinforcement for improved durability and optimum grip in wet weather. Its PU protective knuckle shells are duplicated for improved comfort. It also includes a new GORE-TEX® weatherproof, breathable membrane and a Thinsulate™ 200 g lining for thermal insulation. Double closure system with cuff and forearm adjusting straps. A reflective strip on the outer edge so you can be seen at night. A Touch Screen™ system to handle touchscreens without removing your gloves. The WFX Tech GTX offers the very best to help you face the winter.



BLACK
07201701
XS-07 / S-08 / M-09 / L-10
XL-11 / 2XL-12 / 3XL-13



TECHNICAL FEATURES

- 01. Full-grain goatskin, nylon fabric, and Neoprene™ construction (topside) / Full-grain goatskin for suppleness (palm) weatherproof breathable internal GORE-TEX® membrane
- 02. Thinsulate™ 200 g thermal insulation
- 03. PVC metacarpal-knuckle and knuckle protective shells underneath the fabric and leather
- 04. TPR protective palm slider shell
- 05. Digital pittards leather palm reinforcement
- 06. Dual closure system
- 07. Touch Screen™ system (index finger) for handling touchscreens.





WFX CITY GTX



LENGTH TO CHOSE... COMFORT IN BOTH.

You can choose between a long and a short version. The WFX City is the perfect glove to face the winter with elegance, both in the city or the suburbs, and handle middle-distance road trips with total peace of mind. Its Stretch Cordura® topside construction acts as a windbreaker, and is also flexible enough to offer maximum comfort. Its leather palm and shells concealed underneath the fabric offer perfect protection. Thermal insulation and weather-proofing are ensured by, respectively, a Thinsulate™ 200 g lining and a breathable GORE-TEX® membrane.



TECHNICAL FEATURES

01. Weatherproof, windproof Stretch Cordura® construction (topside) / Full-grain goatskin for suppleness (palm)
02. Weatherproof internal GORE-TEX® membrane
03. Bemberg™ internal comfort lining
04. Thinsulate™ 200 g thermal insulation
05. PVC metacarpal-knuckle and knuckle protective shells underneath the fabric
06. TPR protective palm slider shell
07. Perforated goatskin palm reinforcement
08. Dual closure system with leather + Velcro® tab and weatherproof zipper (long)
09. Closure system with wide Neoprene™ and Velcro® strip (short)



LONG BLACK
07201801
XS-07 / S-08 / M-09 / L-10
XL-11 / 2XL-12 / 3XL-13



SHORT BLACK
07201901



WFX SKIN GTX



RIDE WARM WHEN IT'S COLD OUTSIDE.

This winter city and suburban glove is mostly made of leather, along with a few fabric inserts for comfort. It's a top seller for FIVE! Its weatherproof, breathable GORE-TEX® membrane and its Thinsulate™ 180 g lining perfectly insulate hands from the rain and the cold. Its PVC protective shells concealed under the leather, its TPR protective palm slider, and its leather palm are so many elements that promise real safety in case of a fall. Perforated Clarino® reinforcements on the palm and the thumb promise optimal handlebar grip. And last, but not least, this urban-style glove provides a sensation of total comfort.



TECHNICAL FEATURES

01. Full-grain goatskin and weatherproof nylon fabric construction (topside) / Full-grain goatskin for suppleness (palm)
02. Weatherproof internal GORE-TEX® membrane
03. Bemberg™ internal comfort lining
04. Thinsulate™ 180 g thermal insulation
05. PVC metacarpal-knuckle and knuckle protective shells underneath the leather
06. TPR protective palm slider shell
07. Perforated Clarino® palm reinforcement
08. Closure system with elastic cuff and leather + Velcro® tab



BLACK
07202101
XS-07 / S-08 / M-09 / L-10
XL-11 / 2XL-12 / 3XL-13



BROWN
07202107

WFX1 EVO^{WP}



WFX1 EVO WP



THE WINNING COMBINATION OF LEATHER AND FABRIC TO FACE THE RIGORS OF WINTER.

Usefully combining the benefits of leather with the technical advantages offered by some synthetic materials was our goal in designing the WFX 1 EVO WP, a modern, warm, comfortable, protective, and supple glove to face the harshness of winter. Its entire palm is made from goat leather, renowned for its extreme suppleness. The same goes for most of its topside construction, to which we've added water-repellent, stretch technical fabrics. The main asset of this WFX1 EVO WP is clearly its Primaloft® thermal insulation, a sort of water-resistant, synthetic down fill that captures the natural heat of your hands to create a thermal barrier against outside temperatures. The 5_DRYTECH™ membrane ensures the breathability and weatherproofing you need when it's raining. It's glued to the palm, ensuring that it stays put and offering better grip on the handlebars. An internal lining on the top of the hand in synthetic fur adds a feeling of soft comfort that's comforting when the cold gets to you. Protection is provided by a one-piece ERGO PROTECH® shell concealed under the fabric on the metacarpals, and by the very latest in soft palm shells, along with reinforcements on the outer fingers. Comfort gussets around the wrist contribute to perfect freedom of movement. Particular attention has been paid to the cuff and the closure system. The Over Size Cuff System allows you to adjust the length of the cuff using a weatherproof zipper, so you can more easily wear it over your jacket's sleeve. A two-point adjustment-strap anchor ensures perfect wrist hold. The WFX1 EVO WP features elements that make your everyday ride more enjoyable, such as the Touch Screen™ system for handling device screens, or the Clear Vision Pad™ on the left hand, which allows you to wipe off your helmet visor while you ride. WFX1 EVO WP: the glove designed for long rides in the rain or cold, while your hands stay warm and dry.



BLACK
07220101
XS-07 / S-08 / M-09 / L-10
XL-11 / 2XL-12 / 3XL-13



TECHNICAL FEATURES

- 01. Mixed goat leather and fabric construction (topside) / Goat leather (palm)
- 02. Weatherproof and breathable 5_DRYTECH™ internal membrane
- 03. Primaloft® Silver (topside) and Primaloft® Gold (palm) thermal insulation
- 04. ERGO PROTECH® PVC metacarpo-phalangeal protective shell under nylon
- 05. ERGO PROTECH® soft TPR hypothenar protective shell (palm slider)
- 06. Palm reinforcement in embossed synthetic leather for optimal grip on the controls
- 07. Nylon accordion comfort gussets
- 08. Textured, reflective 3D logos
- 09. Dual closure system with a concealed Velcro® adjustment tab under leather, and a cuff adjustment strip
- 10. Touch Screen™ system for handling touchscreen devices
- 11. Clear Vision Pad™ system (left hand) to wipe off your helmet visor while you ride



WFX2 EVO WP



UPDATED, BUT STILL AFFORDABLE.

The WFX2 EVO WP represents a major evolution over the WFX2 WP (which still has its place in our range), making it an even more effective winter glove that remains affordable. Cozier and better equipped than its predecessor, the WFX2 EVO WP will likely soon become a gold standard in this category. Though its topside construction is mainly in nylon, it includes a large palm reinforcement in natural leather with an integrated soft protective slider at the hypothenar, guaranteeing a certain level of comfort at the controls. Its protection from the cold is better than ever, with the use of Primaloft® Silver thermal insulation on the topside and Primaloft® Gold on the palm. Weatherproofing and breathability are provided by the 5_DRYTECH™ membrane developed by FIVE. It's glued to the palm, so it doesn't budge and for better grip on the handlebars. In terms of safety, the new one-piece ERGO PROTECH® shell protects the topside of the hand. And we haven't forgotten comfort, with the internal lining that touches your skin offering a truly delightful feeling of softness. What makes the WFX2 EVO WP stand apart is the real "state of the art" quality and enjoyment its construction offers. Though designed for wintertime urban and suburban use, it may very well take you much further, with features inspired by high-end road gloves.



BLACK
07221001
XS-07 / S-08 / M-09 / L-10
XL-11 / 2XL-12 / 3XL-13



TECHNICAL FEATURES

- 01. Nylon construction (topside) / Synthetic leather with goat leather reinforcement (palm)
- 02. Weatherproof and breathable 5_DRYTECH™ internal membrane
- 03. Primaloft® Silver (topside) and Primaloft® Gold (palm) thermal insulation
- 04. ERGO PROTECH® PVC metacarpophalangeal protective shell under nylon
- 05. TPR protective hypothenar shell (palm slider)
- 06. Palm reinforcement in embossed synthetic leather for optimal grip on the controls
- 07. Nylon accordion comfort gussets
- 08. Reflective logos
- 09. Dual closure system with a concealed Velcro® adjustment tab under leather, and a cuff adjustment strip
- 10. Touch Screen™ system for handling touchscreen devices
- 11. Clear Vision Pad™ system (left hand) to wipe off your helmet visor while you ride





WFX2 WP



AFFORDABLE CLASSIC STYLE THAT'S EFFICIENT.

Here's our version of a simple, classic, effective, and affordable winter glove. Its topside construction in nylon and Ripstop includes a PVC protective shell. The inside the sleeve in faux fur adds a soft, cozy dimension to the WFX2. A weatherproof, breathable membrane, thermal insulation, comfort gussets, a synthetic leather palm, a wide adjustment tab, and a reflective strip are all part of this glove that is both affordable and complete, created for city and suburban winter use.

TECHNICAL FEATURES

01. Nylon and Ripstop™ construction (topside) / Synthetic leather (palm)

02. Waterproof internal membrane

03. Thinsulate™ 180 g thermal insulation

04. PVC metacarpal-knuckle protective shell underneath the nylon

05. TPR protective palm slider shell

06. Perforated synthetic leather palm reinforcement

07. Nylon accordion comfort gussets

08. Faux fur inside sleeve
09. Reflective strip

10. Closure system with elastic and wide Velcro® strip



BLACK / FLUO YELLOW
07181016
XS-07 / S-08 / M-09 / L-10
XL-11 / 2XL-12 / 3XL-13



BLACK / RED
07171018

BLACK
07181001





WFX FROST WP



THE SHORT WINTER GLOVE TO TAKE ON LONG WINTERS.

Because you might want to ride in the cold without getting weighed down by a long glove, we present FROST, a short glove designed to take on the coldest of winters. It combines a topside in weatherproof stretch fabric with a full-grain goatskin palm. Non-bulky, but warm: the thermal insulation is covered by a 180g Thinsulate™ internal lining and ribbed cuffs. Comfort lining in synthetic fur, on the top of the hand, makes FROST soft and cozy. Its weather-resistance comes from a HIPORA® membrane. In terms of protection, a one-piece PU shell is discreetly concealed underneath the outside surface, on the metacarpals. The palm features a TPR shell and synthetic leather reinforcement, as well as a non-slip reinforcement in large-mesh synthetic leather at the contact point with the handlebars. Add in a Touch Screen™ system on the index finger so you can handle your touchscreens without removing your gloves, reflective elements placed on the back of the hand, an ultra-practical pull-tab, and you get a simple, discreet winter glove full of features that will slide beautifully under your favourite jacket, coat, or down jacket.



TECHNICAL FEATURES

- 01. Weatherproof stretch fabric construction (topside) for weather-resistance and comfort / Full-grain goatskin (palm) for suppleness
- 02. HIPORA® weatherproof membrane
- 03. Bemberg™ internal comfort lining
- 04. Thinsulate™ 180 g thermal insulation
- 05. PU one-piece metacarpal-phalangeal protective shell underneath fabric
- 06. Hypothenar protective shell (palm slider) in TPR
- 07. Non-slip large-mesh synthetic leather palm reinforcement
- 08. Ribbed sleeve
- 09. Reflective print for nighttime visibility
- 10. Quick on/off system with ribbed fabric and synthetic leather tab
- 11. Touch Screen™ system (on index finger) for handling touchscreens



BLACK
07191501
XS-07 / S-08 / M-09 / L-10
XL-11 / 2XL-12 / 3XL-13

WFX3 WP



TECHNICAL FEATURES

THE EFFICIENT, AND AFFORDABLE WINTER GLOVE.

FIVE quality is here, even at an “entry-level” price. This is what the WFX3 brings to the table. A comfortable glove for a user who wants something affordable, without sacrificing quality and efficiency, and who’s looking for a warm, weatherproof glove for urban or suburban use. This style takes its look to another level and now features new technical characteristics such as protective shells on the topside and palm, or the Touch Screen™ system. The same, just better. A whole lot better... compared to its predecessor. Kids can also ride in winter. So we made our popular WFX3 WP available for them in kid version. Comfortable, efficient, and affordable, this warm weatherproof glove will please the youngest riders, or passengers.

- 01. Nylon construction (topside) / Synthetic leather (palm)
- 02. WP Line internal weatherproof membrane
- 03. Thinsulate™ 180g thermal lining
- 04. One-piece PVC metacarpal-phalangeal protective shell underneath ventilated fabric
- 05. Palm protection with a TPR shell and synthetic leather reinforcement
- 06. Elastic and Velcro® strap closure system
- 07. Reflective elements for night-time visibility
- 08. Touch Screen™ system (on index finger) for handling touchscreens without removing gloves



BLACK
07191401
XS-07 / S-08 / M-09 / L-10
XL-11 / 2XL-12 / 3XL-13

KID BLACK
07201301

HEAT TECHNOLOGY

WINTER RIDES?...
FEEL THE HEAT

Winter can sometimes be rough, but how great is it to be able to think about hitting the road without worrying about cold hands? For this, there's nothing like one of our gloves featuring FIVE Heating Technology, gloves that include an electrical resistance element that allows you to regulate the heat you feel. Supplied with low-voltage current through a separate, rechargeable battery, they feature three levels of heat activated by an indicator button that shows one color for each level and is easily accessible when you're riding because it's located on the cuff. Each level affects the temperature provided and the overall battery life. To each his/her own choice of the perfect combination depending on the outside temperature and expected riding time. The HG1, HG2, HG3 and HG4: four styles adapted to conditions as diverse as long-distance travel or city traffic. Four styles at four different price points, yet each of them enjoys the benefits of the same approach focused on comfort and protection, both from the cold and from a fall.

→ **HG1 WP**
BLACK



HG1 WP



THE LONG-DISTANCE HEATED GLOVE.

HG1 is the ultimate in our range featuring Heating Gloves Technology. The latest-generation is even more advanced, more comfortable, more elegant...in a word: more high-performance than ever. It features an easy-to-reach adjustment button that offers three levels of heat, so you can adjust the temperature and find the optimal compromise between the heat you feel and energy consumption. In addition to its thermal regulation qualities, its topside construction, combining full-grain goatskin and Stretch Cordura®, coupled with a breathable, weatherproof HIPORA® membrane, offers perfect resistance to tough weather conditions. Its goatskin palm offers suppleness, and its digital pittards anti-slip leather reinforcements, ideal grip on the controls in wet conditions. A PVC metacarpal protective shell settles in under the leather. With its battery-and resistor-powered heating system, Thinsulate™ insulation, and many features (Clear Vision Pad™, Touch Screen™ system, OverSize Cuff, triple closure system, etc.), the HG1 is the top choice for comfortable, warm rides over long distances when it's really cold outside.



BLACK
06190401
XS-07 / S-08 / M-09 / L-10
XL-11 / 2XL-12 / 3XL-13



TECHNICAL FEATURES

01. Mixed Stretch Cordura®™ and full-grain goatskin construction (upper)/ Full-grain goatskin for suppleness (palm)

02. PVC metacarpal-phalangeal protective shells under leather

03. Hypothenar protective shell (palm slider) in TPR

04. Heating through a separate battery, knob with three levels of heat

05. Weatherproof HIPORA® internal membrane

06. Bemberg™ internal comfort lining

07. Thinsulate™ thermal insulation
08. Digital pittards leather palm reinforcement for optimal grip

09. Dual closure system with a Velcro® tab and waterproof zipper

10. ClearVision pad to wipe off the helmet's visor while you ride, on the left-hand side only

11. Reflective strips for improved nighttime visibility

12. Over Size Cuff System™ sleeve

13. Touch Screen™ system (on index finger) for handling touchscreens with glove on



HG2 WP



THE MULTI-PURPOSE HEATED GLOVE.

The HG2 recently made its remarkable debut as part of the FIVE heated glove range. It stands out from the pack with its exceptional suppleness and comfort. Its battery-led heating system is both practical and efficient: it's accessible via a button with color that changes depending on the level of heat. There are three levels that influence both the heat you feel and your battery energy consumption. With the simple touch of a hand, the rider can choose the level that's best for the conditions at hand (cold temperatures, riding time). In addition to the integrated heat, the HG2 offers all the features you'd expect from a traditional winter glove without forgetting the protective aspect, including a one-piece PVC shell, TPR palm slider, foam reinforcements on each finger, or the cuff that includes high-density foam to protect your forearms. Its Bemberg™ comfort lining cradles your hands softly. The uses of the HG2 are many: from urban riding to long-distance travel, and from scooters to road bikes, it will be your warm, pleasant companion when winter strikes.



BLACK
06200401
XS-07 / S-08 / M-09 / L-10
XL-11 / 2XL-12 / 3XL-13



TECHNICAL FEATURES

01. Mixed stretch waterproof fabric and Cat Eye™ structured fabric construction (topside) for weatherproofing and comfort / Full-grain goatskin (palm) for suppleness

02. Metacarpal-phalangeal protection featuring a PVC shell under fabric

03. Knuckle protection from multiple foam inserts

04. TPR hypothenar protective shell (palm slider)

05. Forearm protection featuring foam reinforcements under fabric

06. Heating through a separate battery with a button offering three levels of heat

07. Battery compartment closure featuring a waterproof YKK zipper
08. HIPORA® waterproof internal membrane

09. Thermal insulation lining

10. Bemberg™ internal comfort lining

11. Accordion comfort gussets between the index and middle fingers and the thumb

12. Digital PU palm reinforcement for enhanced grip on the handlebars

13. Dual closure system with TPR grip on a strip

14. Clear Vision Pad™ visor cleaning system on the left hand

15. Touch Screen™ system (index finger) to handle device screens

16. Reflective FIVE logo





EN 13594:2015

HG3 WP



THE HEATED GLOVE FOR EVERYDAY USE.

The HG3 has been completely redesigned in 2020: more modern, more elegant, more high-performance, this heated glove for urban and suburban riding has adopted the latest FIVE HG heating system. A Thinsulate™ 40g thermal lining on the topside of the glove adds to its excellent heat insulation. It's just what you need to calmly face the cold on city or suburban roads. The HG3 is as comfortable as it is protective when the weather turns bad. It features a one-piece shell to protect the topside of your hand, a TPR shell on the palm, and reinforcements on the outer fingers for protection in case of a fall. Its wide cuff easily covers your jacket sleeve. Add in a Bemberg™ comfort lining, dual closure system, the Touch Screen™ system for handling device screens, and reflective elements so you're more visible at night, and you get an ideally balanced style (lightweight, not too bulky, with an adjustable heat level) for everyday riding in winter over short-to-medium distances.

TECHNICAL FEATURES

01. Waterproof stretch fabric construction (topside and palm) for weatherproofing and comfort
02. Metacarpal-phalangeal protection from a TPR shell under fabric
03. TPR hypothenar protective shell (palm slider)
04. Synthetic leather palm with micro-perforated reinforcement for grip
05. Heating through a separate battery with a button offering three levels of heat
06. Battery compartment closure featuring a waterproof YKK zipper
07. HIPORA® waterproof internal membrane
08. Thinsulate™ thermal insulation lining (topside)
09. Bemberg™ internal comfort lining
10. Reflective nighttime visibility elements
11. Closure system featuring an elastic band and wide Velcro® strip
12. Touch Screen™ system (index finger) for handling device screens



EN 13594:2015

HEATING HT TECHNOLOGY



BLACK
06200301
XS-07 / S-08 / M-09 / L-10
XL-11 / 2XL-12 / 3XL-13

HG4 WP



THE HEATING TECHNOLOGY TO RIDE THE CITY.

The battery-heated leather glove for facing up to the city in cold weather. Short full-grain leather glove ending in a Neoprene™ sleeve so it can be fitted under the jacket or blouson. Ideal to avoid water seeping inside the glove. Lightweight for a heated glove, and derived from a formal glove, the absence of rigid shells makes it extremely comfortable and allows maximum freedom of movement. Yet its leather structure offers the rider very good protection. Leather palm reinforcements. HIPORA® breathable weatherproof membrane. Thinsulate™ 40 g lining. Control knob for 3 heating levels. City use.

TECHNICAL FEATURES

01. Full-grain goatskin construction (topside) / Full-grain goatskin for suppleness (palm)
02. Perforated goatskin palm and hypothenar muscle reinforcements
03. Heating by separate battery, button with 3 heat levels
04. Weatherproof HIPORA® internal membrane
05. Bemberg™ internal comfort lining
06. Thinsulate™ thermal insulation
07. Closure system with wide Neoprene™ and Velcro® strip

HEATING HT TECHNOLOGY



BLACK
06170201
XS-07 / S-08 / M-09 / L-10
XL-11 / 2XL-12 / 3XL-13

WOMAN

IT'S NOT ABOUT
RIDING STYLE.
IT'S ABOUT
RIDING WITH STYLE!

Riding isn't just for men anymore. Women are now joining the ranks of two-wheeled motor connoisseurs in greater numbers than ever... and not just as passengers. More and more ladies are riding. Our Woman range is designed just for you. Though certain styles echo the technical features of our gloves for male riders, their overall shape, ergonomics, and look are specially adapted to women's hands and their tastes. Because, even on a bike, a woman is still a woman, and will never give up a certain kind of elegance. A woman's hands speak volumes about her personality, so they deserve the finest of care. Our goal is to offer you the perfect glove: one that's both protective and elegant.



RS3 EVO
WOMAN
GRAPHICS
FLOWER BOREAL



SPORTCITY
WOMAN
BLACK



SPORTCITY
WOMAN
BROWN / WHITE

RACING

STREET

CUSTOM

TRAIL _ ADVENTURE

WINTER

HEAT TECHNOLOGY

WOMAN

OFF-ROAD



RFX1 WOMAN

PREMIUM RACING GLOVES FOR FAST LADIES.

Racing glove designed for the racetrack and sports bikes. The RFX1 includes ventilated PU knuckle shells and a large carbon-fibre shell to protect the forearm. It offers all the features of a top-of-the-line glove geared towards performance. Kevlar® lining, carbon reinforcements and full-grain leather for protection, Stretch Kevlar® for comfort, a protective barrier for both the palm and the top of the hand, while providing an exceptionally lightweight fit. The Velcro® adjusting tab is concealed beneath a leather protective flap to reduce the risk of the glove being torn off in the event of a fall. This top-of-the-range Racing glove will delight demanding riders of sports bikes, who favor control sensitivity and fit, without over looking safety.



TECHNICAL FEATURES

- | | |
|--|---|
| 01. Full-grain cowhide construction (topside) for durability / Full-grain goatskin (palm) for suppleness | 08. Carbon protective shell on the forearm |
| 02. Ventilated PU metacarpal-knuckle protective shells | 09. Stretch Kevlar® comfort panel (topside) |
| 03. Protective Carbon palm slider shell | 10. Dual closure system |
| 04. Palm reinforcement in digital pittards leather | 11. Shape and size adapted to the feminine form |
| 05. Thenar muscle (palm) reinforcement with a SuperFabric® patch | |
| 06. Internal Kevlar® lining | |
| 07. Outer stitching on the fingers (Güterman threads) | |



RFX SPORT WOMAN



OFF-ROAD

HEAT TECHNOLOGY

WINTER

TRAIL _ ADVENTURE

CUSTOM

STREET

RACING

WOMAN

RFX SPORTWOMAN

YOUR DAILY SPORT.

New for ladies, the RFX Sport is now the entry-level style for our Racing styles. It's more focused on comfort than performance, and is designed for riders looking for an effective, accessible glove for everyday riding on a sport or road bike. It offers a more-than-satisfactory level of protection and comfort for road use, with its goatskin construction, main one-piece PVC shell concealed underneath the leather (perforated for an energetic look), multiple foam reinforcements, and TPR hypothenar protective shell. It deliberately retains a relatively classic look for a sport glove, so it can be your perfectly discreet companion from the road to the office.



BLACK / WHITE
08220319
XS-07 / S-08 / M-09
L-10 / XL-11
Special woman sizes



WHITE / PINK
08220378



TECHNICAL FEATURES

- 01. Full-grain goatskin construction (topside and palm) for extreme suppleness
- 02. PVC metacarpo-phalangeal protective shells under leather (perforated for a great look)
- 03. Stretch comfort gusset over the wrists
- 04. External stitching on the fingers
- 05. Palm and ring and little finger reinforcements in synthetic leather
- 06. TPR hypothenar protective shell (palm slider)
- 07. Dual closure system with an adjustment tab under a protective flap
- 08. Forearm protection from foam reinforcement under leather
- 09. Index, middle, little finger and thumb knuckle protection from foam under leather
- 10. Reflective nighttime visibility panel
- 11. Shape and size adapted to the feminine form





SPORTCITY WOMAN

THE NUMBER ONE CITY GLOVE.

The SportCity allows you to approach city riding with a smile. It received the top technical grade (9/10) when city gloves were tested by influential Moto Magazine starting in 2014. This is the perfect glove for a basic, custom, or classic bike, or a scooter, with its exceptional fit paired with a stellar level of protection. Its sharp look, with its full-grain leather that conceals valuable protective shells and its FIVE metal insignia, allows you to combine it with any outfit, ever so elegantly.



BROWN / WHITE
09190323
XS-07 / S-08 / M-09
L-10 / XL-11
Special woman sizes



BLACK
09170301



TECHNICAL FEATURES

01.

Full-grain cowhide construction (topside) for durability / Full-grain goatskin (palm) for suppleness
02.

One-piece PVC metacarpal-knuckle and knuckle protective shells, underneath the leather
03.

Protective PVC palm slider shell underneath leather
04.

Palm reinforcement in perforated digital synthetic leather
05.

Leather accordion comfort gussets
06.

Closure system with leather tab + press-stud and leather on/off pull tab
07.

Touch Screen™ system (thumb and index finger) for touchscreen handling
08.

Shape and size adapted to the feminine form





KANSAS WOMAN

OUR MOST PROTECTIVE CUSTOM GLOVE.

The Kansas stands out as our most protective custom glove. Featuring a one-piece metacarpal protective shell inserted underneath the leather, and several reinforcements on exposed zones, it offers extra comfort and exceptional adjustability and touch sensitivity on the controls, due to, among other elements, its outer stitching. Its countless details, comfort gussets and topstitching, double closure with a zipper and leather and Velcro® flap, or its incredible level of finishing, make it a piece that leather lovers who want to look good will appreciate, without neglecting their safety. The Kansas marvelously combines classic style with a modern touch, since its index finger hosts the Touch Screen™ system that allows you to handle touchscreens without removing your glove.



BLACK
14200101
XS-07 / S-08 / M-09
L-10 / XL-11
Special woman sizes



BURGUNDY
14200134



TECHNICAL FEATURES

01.

Total full-grain goatskin construction for suppleness (palm and topside), perforated for ventilation (topside)
02.

One-piece PVC metacarpal-knuckle protective shell underneath the leather
03.

Outer stitching on the fingers for optimal fit
04.

Closure and adjustment system with zipper + Velcro® tab and on/off pull tab
05.

Leather accordion comfort panels on fingers and thumb
06.

Accordion leather + Elastic cuff for greater comfort
07.

Hypothenar muscle protection with full-grain cowhide reinforcement panel and memory foam featuring embossed logo
08.

Touch Screen™ system on index finger for handling touchscreens
09.

Shape and size adapted to the feminine form





COLORADO WOMAN

BACK TO BASICS.

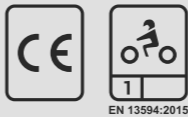
When it comes to all things Custom, we often only remember the essentials, the basics of motorcycling: a chassis, an engine, the controls, and two wheels are all we need to be happy. The same thing applies to the Colorado. In other words, when less truly becomes more...Less panels, less stitching, less protective elements, for greater comfort and control sensitivity. Inspired by a minimalistic approach that's straight out of Japan, the Colorado reminds us of the automotive gloves of the 1960s. The suppleness of full-grain leather invites you to ride your bike subtly and skillfully. Its second-skin smoothness, enhanced by its distinctive construction (with middle and ring fingers separate from the rest of the structure, and one long outer seam around the fingers), will make you feel like you're wearing nothing at all. But the sturdiness of the cowhide will save your hands if you happen to take a spill. Its adjustment tab adorned with a metallic grommet positioned over the wristband adds to the comfort and sleek look of the Colorado. This is a glove you'll choose more for its feeling of freedom than for the protection it provides, there no doubt about it.



BURGUNDY / BROWN
14210239
XS-07 / S-08 / M-09
L-10 / XL-11
Special woman sizes



BLACK
14210201



TECHNICAL FEATURES

01.

Full-grain cowhide construction (topside and palm), for durability
02.

Quilted foam hypothenar reinforcement underneath the leather on the palm side
03.

Distinctive construction, with the middle and ring fingers separate from the rest of its main structure
04.

One long outer seam on the fingers and thumb, for optimal fit
05.

Multiple leather perforations on the top of the fingers, for style and ventilation
06.

Metallic grommet and FIVE Custom embroidered label
07.

Comfort gussets on the inside of the wrist
08.

Topside closure and adjustment system, featuring a leather and Velcro® tab
09.

Shape and size adjusted to a woman's frame





STUNT EVO REPLICA STUNT EVO WOMAN

THE CONCEPT INVENTED BY FIVE... REINVENTED!

Underlying the creation of the STUNT by FIVE was one powerful concept: offering a sport-style glove, designed for urban and suburban riding, that would also be as protective as a track glove and as lightweight and comfortable as a motocross glove. The STUNT has succeeded in perfectly uniting all these elements by adopting a topside made of stretch elements featuring protective shells with a sharp design, and a leather palm that includes a protective carbon slider. Though FIVE invented the STUNT, which has earned the brand its worldwide reputation, this concept is often copied, but never equaled. So, here's a piece of advice: demand nothing less than the original. Because who better than FIVE could take this concept to the next level? The STUNT EVO REPLICA WOMAN, STUNT EVO WOMAN, and STUNT EVO AIRFLOW WOMAN are worthy heirs to the one-and-only, original STUNT...Upgraded.

TECHNICAL FEATURES

01.

Polymesh fabric construction (topside) for elasticity / Full-grain goatskin for suppleness, and siliconed Clarino® for grip (palm)
02.

Ventilated TPU metacarpal-knuckle and knuckle protective shells
03.

Protective Carbon / TPR palm slider shell
04.

Palm reinforcement in perforated Clarino®
05.

Airprene® and 4-Way Spandex™ cuff
06.

4-Way Spandex™ comfort panels
07.

Closure system with tab + Velcro® and Clarino® on/off pull tab
08.

Touch Screen™ system (thumb and index finger) for handling touchscreens
09.

Shape and size adapted to the feminine form



BURGUNDY
09210244
XS-07 / S-08 / M-09
L-10 / XL-11
Special woman sizes



BLACK
09210201



**- REPLICA -
BLACK DIAMOND**
09200138



**- REPLICA -
FLOWER PINK**
09170131

RACING

STREET

CUSTOM

TRAIL - ADVENTURE

WINTER

HEAT TECHNOLOGY

WOMAN

OFF-ROAD



STUNT EVO AIRFLOW WOMAN

THE STUNT... REIN'VENTED'.

A ventilated version of the STUNT EVO, it uses wide mesh topside construction for optimal airflow that is so crucial when temperatures rise. This is one of the most ventilated styles in the Woman range.



TECHNICAL FEATURES

- 01. 3DMesh™ wide-cell fabric construction (topside) for ventilation / Full-grain goatskin for suppleness, and siliconed Clarino® (palm) for grip
- 02. Ventilated TPU metacarpal-knuckle and knuckle protective shells
- 03. Protective Carbon/TPR palm slider
- 04. Palm reinforcement in perforated Clarino®
- 05. Airprene® and 4-way Spandex™ cuff
- 06. 4-Way Spandex™ comfort panels
- 07. Closure system with tab + Velcro® and Clarino® on/off pull tab
- 08. Touch Screen™ system (thumb and index finger) for touchscreen handling
- 09. Shape and size adapted to the feminine form



BLACK / FLUO PINK
09190778
XS-07 / S-08 / M-09
L-10 / XL-11
Special woman sizes



BLACK
09190701



RS3 EVO WOMAN



OFF-ROAD

HEAT TECHNOLOGY

WINTER

TRAIL _ ADVENTURE

CUSTOM

STREET

RACING

WOMAN



RS3 EVO WOMAN




TOUCH SCREEN


KNUCKLES PROTECTION


PALM SLIDER




EN 13594:2015

THE MULTIPURPOSE URBAN GLOVE.

Totally redesigned for 2022, the RS3 EVO is meant to replace one of the most popular FIVE gloves, the RS3. Made for multipurpose urban use and designed for riders looking for a short, functional, comfortable, and affordable glove that offers a reasonable level of protection, the RS3 EVO is a basic you just can't live without, whether as your go-to glove or as a spare for a passenger. It features the very latest FIVE ERGO PROTECH® ergonomic protective shells for greater comfort and effectiveness, and its 4-Way Spandex™ topside construction gives it both excellent fit and major flexibility. Easy to slip on and take off, it's perfect for riders zipping all over town throughout the course of a day. It will be your faithful companion on your everyday urban rides at the controls of any type of machine. Could the RS3 EVO be setting the new standard in its category? All you have to do is try it, and you'll know it's true.

TECHNICAL
FEATURES

01.

4-Way Spandex™ construction (topside) for flexibility / Synthetic leather (palm) for durability
02.

One-piece FIVE ERGO PROTECH® Soft TPR metacarpo-phalangeal protective shells under fabric
03.

TPR hypothenar protective shell (palm slider)
04.

One Way Stretch™ fourchettes for perfect fit
05.

Neoprene™ wristband for fit and comfort
06.

3D mesh inserts over the wrist for better ventilation
07.

Textured 3D logos and TPR knuckle protective elements
08.

Closure system featuring a Velcro® tab and Pull'N'Ride™ pull tab
09.

Touch Screen™ system (index finger) for handling touchscreen devices
10.

Shape and size adapted to the feminine form







- GRAPHICS -
FLOWER BOREAL
09220526
XS-07 / S-08 / M-09
L-10 / XL-11
Special woman sizes





BURGUNDY / GREY
09220544

BLACK / WHITE
09220519



BLACK
09220501

RACING

STREET

CUSTOM

TRAIL - ADVENTURE

WINTER

HEAT TECHNOLOGY

WOMAN

OFF-ROAD



GLOBE WOMAN



THE UNIVERSAL GLOVE... WITH PROTECTIVE SHELLS.

The Globe provides the minimum essential protection you need for any two-wheeled activity (motorbike, scooter, bicycle). Its basic nature makes it pleasant to wear, and it has rapidly become the benchmark basic, universal glove. It comes in black or black/pink. Lightweight, but still including TPR protective shells on the top-side and the palm, it offers a satisfying balance between enjoyable wear and safety. This is a simple, practical, and truly affordable glove.



TECHNICAL FEATURES

- 01. Polymesh™ construction (topside) for comfort / Synthetic leather (palm) for durability
- 02. One-piece TPR metacarpal-knuckle and knuckle protection underneath the fabric
- 03. TPR protective palm slider shell
- 04. Synthetic leather hypothenar muscle reinforcement
- 05. Lycra® fourchettes for optimal fit
- 06. Airprene® cuff for adjustment, comfort and ventilation
- 07. Closure system with TPR tab + Velcro® and synthetic leather on/off pull tab
- 08. Shape and size adapted to the feminine form



BLACK / FLUO PINK
09180678
XS-07 / S-08 / M-09
L-10 / XL-11
Special woman sizes



BLACK
09180601





HG3 WOMAN WP



THE NEW HEATED GLOVE FOR EVERYDAY USE.

The HG3 has been completely redesigned in 2020. Here is the version for Ladies, more modern, more elegant, more high-performance, this heated glove for urban and suburban riding has adopted the latest FIVE HG heating system. A Thinsulate™ thermal lining on the topside of the glove adds to its excellent heat insulation. It's just what you need to calmly face the cold on city or suburban roads. The HG3 is as comfortable as it is protective when the weather turns bad. It features a one-piece shell to protect the topside of your hand, a TPR shell on the palm, and reinforcements on the outer fingers for protection in case of a fall. Its wide cuff easily covers your jacket sleeve. Add in a Bemberg™ comfort lining, dual closure system, the Touch Screen™ system for handling device screens, and reflective elements so you're more visible at night, and you get an ideally balanced style (lightweight, not too bulky, with an adjustable heat level) for everyday riding in winter over short-to-medium distances.



BLACK
11200801
XS-07 / S-08 / M-09
L-10 / XL-11
Special woman sizes



TECHNICAL FEATURES

01. Waterproof stretch fabric construction (topside and palm) for weatherproofing and comfort

02. Metacarpal-phalangeal protection from a TPR shell under fabric

03. TPR hypothenar protective shell (palm slider)

04. Synthetic leather palm with micro-perforated reinforcement for grip

05. Heating through a separate battery with a button offering three levels of heat

06. Battery compartment closure featuring a waterproof YKK zipper
07. HIPORA® waterproof internal membrane

08. Thinsulate™ thermal insulation lining (topside)

09. Bemberg™ internal comfort lining

10. Reflective nighttime visibility elements

11. Closure system featuring an elastic band and wide Velcro® strip

12. Touch Screen™ system (index finger) for handling device screens

13. Shape and size adapted to the feminine form.





WFX SKIN WOMAN WP



RIDE WARM WHEN IT'S COLD OUTSIDE.

This winter city and suburban glove is mostly made of leather, along with a few fabric inserts for comfort. It's a top seller for FIVE! In its woman's version, beautiful topstitching gives it a quilted look, underlined by the subtle FIVE metal insignia. Its weatherproof, breathable HIPORA® membrane and its Thinsulate™ 180 g lining perfectly insulate hands from the rain and the cold. Its TPR protective shells concealed under the leather, its TPR protective palm slider, and its leather palm are so many elements that promise real safety in case of a fall. Perforated Clarino® reinforcements on the palm and the thumb promise optimal handlebar grip. And last, but not least, this urban-style glove provides a sensation of total comfort.



TECHNICAL FEATURES

- 01. Full-grain goatskin and weatherproof nylon fabric construction (topside) / Full-grain goatskin for suppleness (palm)
- 02. Weatherproof internal HIPORA® membrane
- 03. Bemberg™ internal comfort lining
- 04. Thinsulate™ 180 g thermal insulation
- 05. TPR metacarpal-knuckle and knuckle protective shells underneath the leather
- 06. TPR protective palm slider shell
- 07. Perforated Clarino® palm reinforcement
- 08. Closure system with elastic cuff and leather + Velcro® tab
- 09. Shape and size adapted to the feminine form



BLACK / WHITE
11170319
XS-07 / S-08 / M-09
L-10 / XL-11
Special woman sizes



WFX FROST WOMAN WP



THE SHORT WINTER GLOVE TO TAKE ON LONG WINTERS.

Because you might want to ride in the cold without getting weighed down by a long glove, we present FROST, a short glove designed to take on the coldest of winters. It combines a topside in weatherproof stretch fabric with a full-grain goatskin palm. Non-bulky, but warm: the thermal insulation is covered by a 180g Thinsulate™ internal lining and ribbed cuffs. Comfort lining in synthetic fur, on the top of the hand, makes FROST soft and cozy.



BLACK
11190601
XS-07 / S-08 / M-09
L-10 / XL-11
Special woman sizes

TECHNICAL FEATURES

- 01. Weatherproof stretch fabric construction (topside) for weather-resistance and comfort / Full-grain goatskin (palm) for suppleness
- 02. Thinsulate™ 180g thermal insulation lining
- 03. HIPORA® weatherproof membrane
- 04. Bemberg™ internal comfort lining
- 05. TPR one-piece metacarpal-phalangeal protective shell underneath fabric
- 06. Hypothenar protective shell (palm slider) in TPR
- 07. Non-slip large-mesh synthetic leather palm reinforcement
- 08. Reflective print for night-time visibility
- 09. Touch Screen™ system (on index finger) for handling touchscreens
- 10. Shape and size adapted to the feminine form



MILANO EVO WOMAN WP



SIMPLE, UNDERSTATED, AND EFFICIENT.

The Milano Woman, our weatherproof, breathable urban glove designed mainly for mid-season scooter riding, has been completely restyled in 2021. Fully updated, it still retains the characteristics that made its predecessor a real success. It features a protective shell concealed underneath nylon fabric and a leather palm, promising absolute protection. It also features a weatherproof, breathable 5_ DRYTECH™ membrane, thus offering a layer of thermal insulation to protect its rider from the cold. Sleek and subtle, the new Milano Evo Woman retains its fashionable look, making it the perfect companion for elegant occasions, worn underneath a raincoat.

TECHNICAL FEATURES

- 01. Synthetic fabric (topside) and full-grain goat-leather (palm side) construction
- 02. PVC metacarpophalangeal protective shells underneath the fabric
- 03. Internal 5_DRYTECH™ weatherproof, breathable membrane
- 04. Thermal-insulating foam
- 05. Memory-foam hypothenar protection underneath the leather
- 06. Leather palm reinforcement
- 07. Closure system with synthetic leather and Velcro® tab
- 08. Touch Screen™ system for handling electronic devices (on the index finger)



BLACK
10210201
XS-07 / S-08 / M-09
L-10 / XL-11
Special woman sizes



WFX3 WOMAN WP



THE NEW, EFFICIENT, AND AFFORDABLE WINTER GLOVE.

FIVE quality is here, even at an “entry-level” price. This is what the WFX3 brings to the table. A comfortable glove for a user who wants something affordable, without sacrificing quality and efficiency, and who's looking for a warm, weatherproof glove for urban or suburban use. This style takes its look to another level and now features new technical characteristics such as protective shells on the topside and palm, or the Touch Screen™ system. The same, just better. A whole lot better...

TECHNICAL FEATURES

- 01. Nylon construction (topside) / Synthetic leather (palm)
- 02. WP Line internal weatherproof membrane
- 03. Thinsulate™ 180g thermal lining
- 04. One-piece PVC metacarpal-phalangeal protective shell underneath ventilated fabric
- 05. Palm protection with a TPR shell and synthetic leather reinforcement
- 06. Elastic and Velcro® strap closure system
- 07. Reflective elements for night-time visibility
- 08. Touch Screen™ system (on index finger) for handling touchscreens without removing gloves
- 09. Shape and size adapted to the feminine form



BLACK
11190701
XS-07 / S-08 / M-09
L-10 / XL-11
Special woman sizes

MXF PRORIDER S WOMAN



THE ULTIMATE MX GLOVE.

This is the latest generation of motocross gloves built based on the experience of MX or Enduro Grand Prix FIVE riders. Even more lightweight, thin, elastic, and breathable in their "S" version than the original MXF PRORIDER. The topside is made from a single piece of YP Mesh. Finger contours are in small Airmesh™. Everything is done to create unparalleled fit. Finger protection and Sonic™ FIVE logo. The thumbs feature comfort gel at grip contact points in order to reduce the risk of blisters. Gel pad protection at palm to dampen shock and impact in a fall. Palm made of Nanofront™ offering an unrivaled level of control feel and grip. Lycra® gusset for comfort under the TPR and Velcro® adjustment tab, to prevent dirt from getting inside the glove. The ultimate in MX gloves.

TECHNICAL FEATURES

01. YP Mesh™ construction (topside and thumb) for ventilation and fit / Nanofront™ (palm) for improved grip and exceptional steering precision
02. Fourchettes (finger contours) in 2.2 Mesh™ for improved airflow
03. Metacarpal and knuckle protection with TPR Sonic™ patches and 3D logo
04. Hypothenar muscle protection with a gel panel under Nanofront™
05. Gel inserts at points of contact and anti-blisters palm lining
06. Closure system with TPR + Velcro® tab and Clarino® puller tab
07. Shape and size adapted to the feminine form



GREY / BLUE / FLUO PINK
15200187
XS-07 / S-08 / M-09
L-10 / XL-11
Special woman sizes



MXF4 WOMAN



TECHNICAL FEATURES

01. Polyester Mesh construction (topside) / AX Suede synthetic leather (palm)
02. Logo and graphic sublimated prints
03. Palm reinforcement underneath synthetic leather
04. Fourchettes (finger contours) in Lycra®
05. TPR + Velcro® tab closure system
06. Silicone print on the inside of the index finger for good handlebar grip

THE MOTOCROSS GLOVE THAT GOES BACK TO BASICS.

The affordable motocross glove that isn't weighed down with anything extra. Polymesh topside construction, AX Suede™ synthetic leather palm, Lycra® finger contours, palm reinforcement, closure with a TPR and Velcro® tab, silicone print on the index finger for better handlebar grip... nothing gets in the way of the rider's movements. The MXF4 is sure to satisfy those who believe that a motocross glove should be kept to an absolute minimum for it to take things to the max.



MONO FLUO YELLOW
12220233
XS-07 / S-08 / M-09
L-10 / XL-11
Special woman sizes



MONO WHITE
12220202



SCRUB BLACK / PINK
12220212

OFF-ROAD

DON'T CHOOSE TOTAL LOOK.
CHOOSE TOTAL PERFORMANCE.

In motocross or off-road, most riders match their gloves to the rest of their look, and consider gloves as just an extension of their jersey / pants outfit. You just have to try on a FIVE glove to understand all the benefits of wearing a product designed and made for effectiveness and performance, not just for the look. FIVE gloves provide both improved steering sensitivity, and help prevent blisters, sworn enemies of any pro or amateur rider. They significantly enhance the joy of riding, and, therefore, the rider's level of performance. Just as we don't necessarily match our helmet or our boots to the rest of our outfit, the most demanding riders know that only a glove specialist can offer them the best MX or Off-Road glove. Wearing FIVE gloves is no faux pas... on the contrary, it's a sign that you pay attention to every single detail. And that alone gives you a serious edge over the competition.

E1/SH.

Steve HOLCOMBE - E1
7x Enduro GP & E3 World Champion
(2016, 2017, 2018, 2019, 2020,...)



Thomas DO - MXF4
US Supercross Lites Championship
Multi-Time French SX Champion



MXF4
MONO BLACK

MXF PRORIDER S



OFF-ROAD

WOMAN

HEAT TECHNOLOGY

WINTER

TRAIL - ADVENTURE

CUSTOM

STREET

RACING



MXF PRORIDER S



THE ULTIMATE MX GLOVE.

This is the latest generation of motocross gloves built based on the experience of MX or Enduro Grand Prix FIVE riders. Even more light-weight, thin, elastic, and breathable in their "S" version than the original MXF PRORIDER. The topside is made from a single piece of YP Mesh. Finger contours are in small Airmesh. Everything is done to create unparalleled fit. Finger protection and Sonic™ FIVE logo. The thumbs feature comfort gel at grip contact points in order to reduce the risk of blisters. Gel pad protection at palm to dampen shock and impact in a fall. Palm made of Nanofront®, a material coming from Japan introduced by FIVE on an MX glove, offering an unrivaled level of control feel and grip. Lycra® gusset for comfort under the TPR and Velcro® adjustment tab, to prevent dirt from getting inside the glove. The ultimate in MX gloves.



BLACK / GOLD
12200548
XS-07 / S-08 / M-09 / L-10
XL-11 / 2XL-12 / 3XL-13



TECHNICAL FEATURES

- 01. YP Mesh™ construction (topside and thumb) for ventilation and fit / Nanofront® (palm) for improved grip and exceptional steering precision
- 02. Fourchettes (finger contours) in 2.2 Mesh™ for improved airflow
- 03. Metacarpal and knuckle protection with TPR Sonic™ patches and 3D logo
- 04. Hypothenar muscle protection with a gel panel under Nanofront®
- 05. Gel inserts at points of contact and anti-blister palm lining
- 06. Closure system with TPR + Velcro® tab and Clarino® puller tab



MXF PRORIDER S



Stephen RUBINI - MXF ProRider S
MX2 World Championship
European MX2 vice Champion (2019)



BLACK / WHITE
12180519



WHITE
12170502



FLUO YELLOW
12170533



YELLOW / BLACK
12200516



BLUE
12200506



ORANGE
12200504



RED
12200503



GREENWATER / FLUO YELLOW
12200530



GREY / ORANGE
12200535



BLACK / GOLD
12200548



BLACK
12200592

RACING

STREET

CUSTOM

TRAIL - ADVENTURE

WINTER

HEAT TECHNOLOGY

WOMAN

OFF-ROAD



MXF3



EXTREME VENTILATION FOR EXTREME RIDERS.

An ultra-ventilated motocross glove. Palm in synthetic leather. Topside in large Mesh for improved airflow. TPR and Velcro® adjustment tab. Finger contours in Heavy Lycra®. And some clever visual appeal from our designer: the Sonic FIVE logo on the top of the hand is designed to be "legible" from afar, but not necessarily from close-up.

TECHNICAL FEATURES

- 01. Wide-cell Mesh + 2-Way Spandex™ construction (topside and thumb) / AX Suede® synthetic leather (palm)
- 02. Lycra® fourchettes (finger contours)
- 03. Closure system with TPR + Velcro® tab



RED
12220903
XS-07 / S-08 / M-09 / L-10
XL-11 / 2XL-12 / 3XL-13



Nathan WATSON - MXF3
MX1 World Championship
Touquet Enduropale winner (2019)
French Sand Race Champion (2019, 2020)



BLACK / WHITE
12200919



BLACK / FLUO YELLOW
12190916



BLACK / FLUO ORANGE
12170915



WHITE
12220902



BLUE / WHITE
12220921



RED
12220903



BLACK
12220901



KID
BLACK / WHITE
12221119



KID
BLACK / FLUO YELLOW
12221116



KID
BLACK / FLUO ORANGE
12181115

RACING

STREET

CUSTOM

TRAIL - ADVENTURE

WINTER

HEAT TECHNOLOGY

WOMAN

OFF-ROAD



MXF4



THE MOTOCROSS GLOVE THAT GOES BACK TO BASICS.

The affordable motocross glove that isn't weighed down with anything extra. Polymesh topside construction, AX Suede™ synthetic leather palm, Lycra® finger contours, palm reinforcement, closure with a TPR and Velcro® tab, silicone print on the index finger for better handlebar grip... nothing gets in the way of the rider's movements. The MXF4 is sure to satisfy those who believe that a motocross glove should be kept to an absolute minimum for it to take things to the max.



- MONO -
FLUO YELLOW
12221233
XS-07 / S-08 / M-09 / L-10
XL-11 / 2XL-12 / 3XL-13



TECHNICAL FEATURES

- 01. Polyester Mesh construction (topside) / AX Suede synthetic leather (palm)
- 02. Logo and graphic sublimated prints
- 03. Palm reinforcement underneath synthetic leather
- 04. Fourchettes (finger contours) in Lycra®
- 05. TPR + Velcro® tab closure system
- 06. Silicone print on the inside of the index finger for good handlebar grip



Thomas D0 - MXF4
US Supercross Lites Championship
Multi-Time French SX Champion

MXF4



Thomas DO - MXF4
US Supercross Lites Championship
Multi-Time French SX Champion



- MONO -
FLUO YELLOW
12221233



- MONO -
RED
12221203



- MONO -
WHITE
12221202



- MONO -
BLACK
12221201



- SCRUB -
NAVY / FLUO ORANGE
12221215



- SCRUB -
BLUE / FLUO YELLOW
12221260



- SCRUB -
GREY / FLUO RED
12221235



- SCRUB -
WHITE / RED
12221250



- GRAPHICS -
THUNDERBOLT BLACK / GOLD
12221248



- GRAPHICS -
FLAT TRACK BLACK / WHITE
12221219



- GRAPHICS -
SLICE NEON PURPLE
12221288



KID
MONO FLUO YELLOW
12221233



KID
MONO RED
12221203



KID
MONO WHITE
12221202



KID
MONO BLACK
12221201



KID
SLICE NEON PURPLE
1222188

RACING

STREET

CUSTOM

TRAIL - ADVENTURE

WINTER

HEAT TECHNOLOGY

WOMAN

OFF-ROAD



NEO



THE NEW “NEO” GLOVE FOR WINTER TRAINING.

The NEO gets its name not just from its newness, but also from the small glove known as a “Neoprene™” that you should always have in your bag for winter motocross training or cool morning/evening bike rides. It’s not, strictly speaking, made of Neoprene™. Its Lycra® Fleece construction feels even more pleasant and comfortable than simple Neoprene™, because it’s thinner and less constricting. It acts as a slim barrier against the wind and cold, while retaining a flexibility that leaves your movements, and your precision at the controls, unhindered. Beyond insulating and retaining your hand’s natural warmth, the NEO proves its effectiveness with a number of elements, such as the silicone prints on the inside of the palm, index, and middle fingers, for optimal grip on the controls, and its Clear Vision Pad™, to wipe off your face mask, or Touch Screen™ systems, for handling electronic devices (smartphone or GPS). With the NEO, riding off-road in winter and braving the elements will swiftly become a real pleasure. Though it’s designed for training, some riders will make it their secret weapon for competitions under extreme conditions.



FLUO YELLOW
12211633
XS-07 / S-08 / M-09 / L-10
XL-11 / 2XL-12 / 3XL-13



BLACK
12211601



TECHNICAL FEATURES

- 01. Lycra® Fleece construction, to block out the cold and wind (topside)
- 02. AX Suede® Cinco synthetic leather that combines comfort and excellent grip (palm side)
- 03. Silicone prints on the index and middle fingers and on the palm, for grip on the controls
- 04. Embossed Neoprene™ wristband with integrated Velcro® adjustment tab
- 05. Outer part of the thumb in Clear Vision Pad™ micro-terry foam, for cleaning off your face mask
- 06. Fourchettes (between the fingers) in water-repellent Lycra®
- 07. Pull'N'Ride on/off tab integrated into the wristband
- 08. Touch Screen™ system (on the index finger) for handling electronic devices
- 09. FIVE embossed or retro-reflective logos



E1





E1



THE ULTIMATE ENDURO GLOVE.

The specs for the E1 were simple: create the best Enduro glove ever made...thin, lightweight, comfortable, and tough, while still being protective. To accomplish this, we had the benefit of Steve Holcombe's experience as quintuple World Champion in this sport, as he helped us develop this glove. The results are spectacular. The E1 has proven to be as comfortable and effective as our iconic MXF Pro Rider S motocross glove (the gold standard in MX gloves), while offering a level of protection that is essential in Enduro, without hindering or hampering your movements in the least, with its FIVE AirGO PROTECH® soft TPR protective shells that are completely imperceptible. The use of Nanofront™ on the palm, a Japanese material (that FIVE first used on the MXF ProRider) offering high moisture absorption and unparalleled grip, helps minimize the formation of blisters. This makes the E1 a precious companion on long days out riding, reducing fatigue. The palm features a synthetic leather hypothenar reinforcement lined in foam to better absorb the impact if you take a spill. The same goes for the thumb at control contact points. The E1's topside construction is in a tough stretch nylon fabric. The zone from the metacarpals down to the wrist is made in embossed Neoprene™ that surrounds the joint and includes an adjustment tab, for perfect fit. A large "5" logo in soft TPR creates an additional reinforcing element on the metacarpals. Silicone prints on the index and middle fingers and in the center of the palm ensure excellent grip on the controls. The Touch Screen™ system allows you to handle GPS or smartphone screens. The E1 will undoubtedly convince riders who are only satisfied with the very best.

TECHNICAL FEATURES

01.

Topside: Mixed construction, stretch nylon fabric / Embossed Neoprene™
02.

Palm: Nanofront™ / Synthetic leather hypothenar reinforcement with 2 mm foam rubber reinforcement on the palm / 3 mm foam rubber cushioning on the thumb
03.

Dual, ventilated FIVE AirGO PROTECH® protective shells in soft TPR, virtually imperceptible
04.

TPR mini protective shells on the fingers
05.

TPR Sonic heat-sealed "5" protective logo
06.

Anti-bliстер cushioning on the thumb joint
07.

FIVE ErgoFit construction for optimal fit and freedom of movement for the fingers
08.

Silicone print on the inside of the fingers and palm for optimal grip on the controls
09.

Clear Vision Pad™ visor cleaning system on the left-hand side
10.

TouchScreen™ system (index finger) for handling touchscreen devices
11.

Closure with a Velcro® adjustment tab integrated into the Neoprene™ construction



Steve HOLCOMBE - E1
7x Enduro GP & E3 World Champion
(2016, 2017, 2018, 2019, 2020,...)



NAVY / FLUO YELLOW
12221716
XS-07 / S-08 / M-09 / L-10
XL-11 / 2XL-12 / 3XL-13



BLACK / FLUO ORANGE
12221715

BLACK / WHITE
12221719

RACING

STREET

CUSTOM

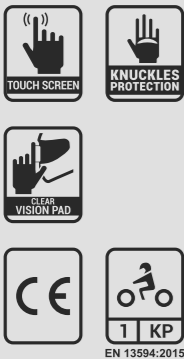
TRAIL - ADVENTURE

WINTER

HEAT TECHNOLOGY

WOMAN

OFF-ROAD



E2



THE GLOVES SPECIFICALLY DESIGNED FOR RECREATIONAL AND COMPETITIVE ENDURO. CE CERTIFIED!

We proudly present the result of our collaboration with five-time Enduro World Champion Steve Holcombe, and 2019 E2 World Champion Loïc Larrieu, after many months in development: the E2, a glove designed specifically for Enduro, both recreational and competitive. It offers all the performance of a motocross glove, combined with a superior level of protection that's essential in the great outdoors. This includes branches and rocks that can sometimes be tough on riders...because you're not always protected by handguards, particularly if you take a spill. So, we've included just the amount of reinforcements and protection you need at strategic points, so you maintain total freedom of movement. This is what we're talking about with the dual-shell ERGO PROTECH® in soft TPR, which'll protect you from tree trunks or rocks, but is also nearly undetectable when you're at the controls. We've really focused on ventilation, with mesh fabric on the inner half of the hand, while we've kept the tougher materials on the outer half that's more exposed to all kinds of contact (with trees, thorns, rocks, etc.). And since Enduro means you spend long hours at the controls, navigational contact has to be comfortable. The E2 is thus equipped with a palm in AX Suede® Novobuck™, a material that provides excellent grip and is both durable and comfortable, along with 2 mm foam rubber pads on the palms and 3 mm on the thumbs. You get the picture: with the E2, FIVE offers an Enduro-specific glove that's bound to set the standard...

TECHNICAL FEATURES

- 01. Topside: Mixed construction, with ventilated mesh on the inner side/extra-tough 4-way-stretch polyester on the outside / Palm: AX Suede® Novobuck™ / hypothenar and control contact-point reinforcement in synthetic leather / 2 mm foam rubber reinforcements on the palms / 3 mm foam rubber pads on the thumbs
- 02. Dual ERGO PROTECH® protective shells in soft TPR, virtually undetectable
- 03. Mini-protective shells in TPR on the fingers + 3 mm foam rubber reinforcements on the ring and little fingers
- 04. 5 TPR Sonic heat-sealed protective logo
- 05. FIVE ErgoFit construction for optimal fit and freedom of movement
- 06. Synthetic leather reinforcement on the edge of the hand, up to the radius
- 07. Silicone print on the inside of the fingers for optimal grip
- 08. Clear Vision Pad™ visor cleaning system on the left-hand side
- 09. Touch Screen™ system (index finger) for handling electronic devices
- 10. Adjustable tab closure integrated into the mesh and Velcro® fabric structure of the glove



Loïc LARRIEU - E2
E2 Enduro World Champion (2019)
ISDE winner (2017)
Multi-time French Enduro Champion



BLACK
12211401
XS-07 / S-08 / M-09 / L-10
XL-11 / 2XL-12 / 3XL-13



GREY / FLUO YELLOW / NAVY
12211436

ORANGE
12211404

RACING

STREET

CUSTOM

TRAIL - ADVENTURE

WINTER

HEAT TECHNOLOGY

WOMAN

OFF-ROAD



E3 EVO



THE FIVE ENTRY LEVEL ENDURO GLOVE, CE CERTIFIED!

The E3 style thus gives you access to a FIVE Enduro range that keeps expanding. CE certified for open-road use, as certain regulations require, the E3 EVO features a metacarpal-phalangeal protective shell in soft TPR, concealed under mixed Spandex™ / Polymesh construction. While this shell promises protection in case of contact with pebbles, branches, or if you take a tumble on the open road, these two materials give the E3 EVO extreme flexibility, so that nothing hinders the mobility of the rider's hand. A synthetic leather reinforcement ventilated at the point of contact with the handlebars seeks to reduce the risk of thumb blisters. Similarly, the palm in AX Suede® Novobuck is reinforced on the hypothenar muscle with a synthetic leather inset and features a silicone print for optimal grip on the controls. Slip-on and closure are made easy with the inclusion of a pull tab (on the palm side) and an adjustable Velcro® flap integrated into the glove's construction. The E3 EVO proves to be extremely lightweight despite its one-piece protective shell, and even includes a Touch Screen™ system on the index finger, allowing you to handle your device screens (smartphone or GPS). It's all more than enough to satisfy Enduro lovers and ramblers who are exacting... but frugal.

TECHNICAL FEATURES

01.

Sublimated Spandex™ and Polymesh construction (topside) / AX Suede® Novobuck (palm)
02.

Soft TPR metacarpal-phalangeal protective shell concealed under fabric
03.

Soft TPR phalangeal mini protective shell (index, middle, ring fingers)
04.

Synthetic leather reinforcement on the hypothenar muscle
05.

Synthetic leather thumb reinforcement at the zone of contact with the handlebars
06.

Silicone print on the palm to enhance grip
07.

Fourchettes (finger contours) in Heavy Lycra® to boost flexibility and airflow
08.

Closure system with Velcro® flap and pull tab
09.

Touch Screen™ system for using device screens (GPS, smartphone)
10.

CE certified (open-road use)



FLUO YELLOW /BLUE
12211320
XS-07 / S-08 / M-09 / L-10
XL-11 / 2XL-12 / 3XL-13



RED
12211303

ORANGE
12211304



BLACK
12211301

RACING

STREET

CUSTOM

TRAIL - ADVENTURE

WINTER

HEAT TECHNOLOGY

WOMAN

OFF-ROAD

E-WP



THE OFF-ROAD GLOVE
TO HELP YOU FACE THE WIND AND RAIN.

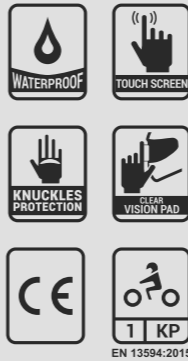
Because off-roading (Enduro, quad, ATV) is fun year-round, including when the weather's bad, you have to be equipped and ready for anything. FIVE is proud to introduce the E-WP, an off-road glove that features a 5_DRYTECH™ breathable, weatherproof membrane and a water-repellent stretch outer shell. This glove is truly effective and comfortable when you have to face the wind and rain, which is sometimes a reality when you're on long rides in the great outdoors. Made from tough, durable materials that are moisture- and abrasion-resistant, the E-WP should always be in your belt bag or backpack when the weather's likely to take a turn for the worse, so you can keep on rolling with your hands dry, at the first sign of rain. Its synthetic leather AX Suede® embossed palm, for enhanced grip on wet, or even mud-splattered, controls, offers excellent navigational control and significant comfort, especially when hours of riding seem endless in the pouring rain. With its Touch Screen™ system and Clear Vision Pad™, you'll always be able to use your GPS or wipe off the outside of your visor, to help you find your way. You may end up exhausted and soaked from head to toe...but your hands will stay nice and dry inside the E-WP.



BLACK / FLUO YELLOW
12211516
XS-07 / S-08 / M-09 / L-10
XL-11 / 2XL-12 / 3XL-13



BLACK
12211501



TECHNICAL
FEATURES

01. Topside: Water-repellent stretch fabric construction / Palm: AX Suede® synthetic leather, embossed for perfect grip in wet conditions

02. 5_DRYTECH™ breathable, weatherproof membrane, partially bonded on the palm side

03. Dual ERGO PROTECH® protective shell in soft TPR, nearly undetectable

04. Synthetic leather reinforcement on the thumbs

05. Fourchettes (bands between the fingers) in Heavy Lycra®

06. Pull'N'Ride™ pull tab

07. TPR and Velcro® tab closure
08. Lycra® wrist gusset that keeps dirt from getting into the glove

09. Internal Bemberg™ comfort lining

10. Comfort gussets on the top of the hand and on the index and middle fingers

11. Foam reinforcements on the ring and little fingers

12. Clear Vision Pad™ visor cleaning system on the left-hand side

13. Touch Screen™ system for handling electronic devices (index finger)



TECHNICAL GLOSSARY

All brands or products mentioned in this glossary are the property of the firms, suppliers, or partners of FIVE Gloves or of its manufacturing units, and are mentioned for informational purposes.

5_DRYTECH™ – Weatherproof / breathable and windproof membrane developed by FIVE specifically for two-wheeled vehicles. Allows perspiration to evaporate, while it stops raindrops from getting into the glove. Attached to the external structure and the lining of the glove with adhesive strips, so that it really stays put.

AirGO PROTECH® – A protective shell crafted by FIVE, with a trade-marked design, offering superior ergonomic and protective qualities, which includes an air inlet to promote ventilation of the hand.

Airprene® – Ultra-stretch polymer foam that offers excellent support, with a microcellular structure and perforations that ensure optimal air and moisture flow. We use it most often for the support and breathability it provides on the wristband.

Anti-twist ties – An element connecting the little and ring fingers, to stop the little finger from being x away from the hand in the event of a fall. Made from leather, in an accordion shape (a FIVE innovation) on our Racing gloves, in order to limit the range of motion without being constricting.

AX Suede® – A synthetic material made from polyester microfiber. An alternative to suede leather that offers the advantage of being machine washable. Designed to enhance functions such as dexterity, flexibility, skid resistance, moisture management, etc. Comes in many varieties, with many possible applications.

Bemberg™ / Micro Bemberg™ – An artificial textile fiber obtained from natural materials, including cellulose from a variety of botanical sources, and featuring a silky texture, used as a lining inside gloves in order to offer a pleasant and comfortable contact zone.

Carbon PVC – A protective element consisting of a carbon sheet between two layers of PVC, which gives it an optimal firmness/flexibility ratio. We often include a carbon PVC shell at the hypothenar, which we also call a palm «slider».

Carbon Thermoset – Thermoset carbon passed through an autoclave, originating from Italy. Used in aeronautics, Formula 1, and Moto GP. Used in the protective shells of our high-end Racing style, the RFX Race. Offers high skid resistance, extremely light weight, and an exceptional level of protection.

Cat Eye™ – A polyester-based synthetic fabric with a structured upper surface.

Clarino® – A synthetic material that emulates natural suede leather, used on the palm side for its comfort, skid resistance, and excellent grip. Machine washable.

Clear Vision Pad™ – A micro-terry cloth fabric panel that allows you to wipe off your helmet's visor or mask while riding. (A FIVE brand name)

Cordura® Stretch – Cordura®. A heavy-duty fabric that offers elastic qualities in its Stretch version.

Embossed – A textured effect that highlights a decorative element (logo or other).

ERGO PROTECH® – A protective shell crafted by FIVE, with a trade-marked design, that can be visible or concealed under fabric or leather, offering superior ergonomic and protective qualities. Available in one-piece or double versions (A FIVE brand name)

Gore-TEX® GRIP Fully bonded – A weatherproof/breathable benchmark membrane offering superior weather-resistance and breathability, featuring the GUARANTEED TO KEEP YOU DRY™ pledge. Fully molds to the shape of the palm for exceptional user comfort and enhanced touch sensitivity.

Gore-TEX® GRIP Partially bonded – A weatherproof / breathable benchmark membrane offering superior weather-resistance and breathability qualities, featuring the GUARANTEED TO KEEP YOU DRY™ pledge. Partially molds to the shape of the palm, so that it really stays put.

GORE-TEX® – A weatherproof/breathable benchmark membrane offering superior weather-resistance and breathability qualities, featuring the GUARANTEED TO KEEP YOU DRY™ pledge.

GUTTERMANN® – A stitching thread originating from Germany. Used on our high-performance gloves due to its superior tear resistance and ability to limit the risk of cuts in the event of an accident.

HG / Heating Technology – Heating glove. Heating technology. A glove that is heated by resistors and either a self-contained battery or mini-cigarette lighter power cord. It's possible to adjust the level of heat by favoring the perceived temperature or the battery life. (A FIVE brand name)

HIPORA® – A weatherproof/breathable membrane offering excellent weather-resistance and breathability.

Hypothenar – A part of the hand that includes a group of muscles that govern the movements of the little finger.

KEVLAR® – A synthetic fiber that is extremely resistant to tearing, perforation, and skidding, made from aramid resin. This high level of toughness makes it a material used in, as one example, the manufacture of bullet-proof vests.

KEVLAR® stretch – Kevlar® fiber featuring elastic qualities.

Leather / Goat – Leather used to make our gloves, due to its superior suppleness.

Leather / Cowhide – Leather used to make our gloves, due to its superior toughness and durability.

Leather / Digital – Leather whose surface is laser-embossed to create a multitude of tiny prints to enhance grip on the controls in wet weather.

Leather / Full-grain – Leather that has its upper layer intact, thus featuring all the natural irregularities of the animal hide.

Lycra® – A synthetic fiber with elastic properties. We use it in the areas that require perfect elasticity, such as finger contours or the wrist opening.

Memory foam – A material made of viscoelastic foam that recovers its original shape when it is deformed. We use it in the zones that require impact absorption or as a comfort element.

Mesh Fabric – A honeycombed fabric that eases airflow.

Mesh Fabric 3D – A honeycombed fabric that eases airflow, with cells that feature a bulky texture.

Metacarpals – The set of bones that form the structure of the palm of the hand, located between the fingers and the wrist.

Nanofront® – A premium material from Japan, introduced by FIVE within the palm of our high-end motocross gloves, chosen for its exceptional anti-skid, slimness, suppleness, moisture absorption, and thermal barrier properties. Made up of fibers measuring 700 nanometers in diameter.

Nubuck – A leather finish that features a velvety effect obtained through scraping / polishing of its upper surface.

One Way Stretch™ – Stretch material that is inserted at the fourchettes zone (between fingers) of some models for optimal flexibility.

Palm reinforcement – Leather, fabric, or PU Grip elements that are designed to enhance the comfort of the glove on the palm side, its grip, and its chafe resistance.

Primaloft® – The best alternative to eiderdown, without its drawbacks. A high-performance thermal insulation material made from a trademarked synthetic microfiber. Developed in 1983 for the U.S. Army as an alternative to goose down, synthetic, insulating, and water-resistant. Offers a high level of comfort in cold weather by retaining the hand's natural heat. Available in different varieties and densities.

PU – Polyurethane. A flexible plastic material.

PU GRIP – A Polyurethane panel whose surface features hollow and textured dots that give it excellent grip in wet conditions.material.

Pull'N'Ride™ – A pull-tab that makes slipping on a glove easier. (A FIVE brand name)

PVC – Polyvinyl chloride. A highly stable plastic material that exists in rigid or flexible forms.

Reflective – Reflective elements that mirror headlight brightness, to make motorcyclists visible to others on the road during night-time riding.

Spandex™ – A Lycra®-based synthetic material, renowned for its elasticity. Used to enhance elasticity over a specific part of the glove.

Spandex™ 4-Way – A Lycra®-based synthetic material, renowned for its elasticity. Stretches in 4 different directions (up-down and left-right). Used to enhance the overall elasticity of the glove.

SuperFabric® – A material that is highly resistant to skids and to sharp or pointed elements, made of a fabric base whose surface is covered with a multitude of textured resin dots that form a protective barrier. It is also weatherproof and breathable. We use it mostly on our high-performance gloves.

Synthetic Leather – For FIVE, a fine substitute for natural suede leather. Used mainly on the palm side due to its elasticity, durability, and comfort. Machine washable. A vegan material.

Thenar – The rounded, muscular mound on the upper part of the hand, underneath the thumb.

Thinsulate™ – A synthetic fiber and trademark of the 3M® company, offering thermal insulation properties. Derived from the English Thin and insulate. Available in different densities and weights for different parts of the glove and a variety of desired insulation/thickness ratios.

Touch Screen™ – The inclusion of elements that allow for the handling of touchscreens without removing your glove. It is most often found on the index or the index finger and thumb, depending on the particular style of glove. (A FIVE brand name)

TPR – Thermo-Propylene Rubber. A material that can be molded or extruded above its melting point. Used as a decorative or protective element on our gloves.

TPU – Thermo-polyurethane. A plastic material that can be variably firm or flexible, obtained through thermo-molding. We use it for some of our protective shells.

TT / Tourist Trophy – A motorcycle race that is regarded as the most dangerous in the world. It takes place over the roadways of the Isle of Man (UK). Official FIVE rider Peter HICKMAN, equipped with RFX Race gloves, holds the all-time average speed record for this race (218 km/h - 135 mph), and has claimed victories in all its categories.

V-Entrance™ – A specific method of assembling the wristband elements, developed by FIVE to make it easier to slip on the glove. (A FIVE brand name)

Vegan friendly – A synthetic glove that contains no elements of animal origin in its composition.

Velcro® – A contact closure system using tiny hooks and textile loops, commonly known as «scratch» in French.

Water-repellent fabric – Fabric with a texture that allows water droplets to slip over its surface and thus slow their penetration into the glove.

WP – Weatherproof. A glove that features a waterproof, breathable membrane and can be used in the rain, because it keeps hands dry.



FIVE ADVANCED GLOVES

COLLECTION // 2022

RACING



RFX RACE

RFX1 REPLICA

RFX1



RFX1

RFX2

RFX2 AIRFLOW



RFX3

RFX4 EVO



RFX SPORT

RFX SPORT AIRFLOW

RFX WP

SPORT WP

UNFOLD TO VIEW WHOLE COLLECTION

TECHNICAL ICONS

DEFINITION



Conductive fabric on thumb and index to manipulate touchscreens



Conductive fabric on index to manipulate touchscreens



Clear Vision Pad™ screen cleaning system on the left hand



Knuckles protective shell



Palm slider protective shell



Thinsulate™ insulation to protect against cold weather



Waterproof membrane



Heating System with integrated battery



Off-road use only



CE certification EN 13594:2015



EN 13594:2015



EN 13594:2015



EN 13594:2015

FIVE GLOVES SAS / www.FIVE-GLOVES.com
contact@five-gloves.com / +33 (0)4.90.89.98.75

All products, product specifications and data are subject to change without notice / Produits, caractéristiques et informations sujets à modifications sans préavis.

PHOTOS : Damien ROSSO (Studio) - Antonin GRENIER (Ambient Shootings + Cover) - Antonin BIEZ (Photos Factory) - André CHACO (Photos Xavier De SOULTRAIT) - Lukasz SWIDEREK (Photos MotoGP / WSBK) - Pascal HAUDIQUERT (Photos MXGP et MX France) - Stephan LEGRAND / Keyona KEEVEN (Photos Thomas DO) - Jean-Marie POUGET (Photos Loïc LARRIEU) - Kevin FRANCOIS (Photos E3) - Davide MESSORA (Photos Thomas CHAREYRE) - Future 7 Media (Photos Steve HOLCOMBE) - Double Red (Photo Peter HICKMAN) + Photos Courtesy of Team ASSOMOTOR, Tech 32, Team VHR, Team SR Motoblouz - FIVE Team - DR.

PRODUCT DESIGN & DEVELOPMENT : Sebastien ARPOTZO - Boris CHAMBON - Matthieu LALLOZ - Guillaume SCIUS.

CATALOG DESIGN & CONTENT : David GAU - Stéphane FRANC

SPECIAL THANKS : To our legend cover boy Jean-Michel "JMB" BAYLE. To our beautiful model-riders: Alison, Anna & Victoria (Women) / Sébastien CHARPENTIER, Florian MARINO (Racing) / Cédric LEFEBVRE, Pierre DOREZ (Street) / Nicolas FESQUET, Jeremie BOIX, Laurent AUBERT, Anthony, Nico "Ikon Tatoo" (Custom) / Jean-Michel BAYLE (Trail) / Théo BOLLEY (Street, Trail, Winter). To our friends at Moto Park, Moto Sud 34, Ducati Montpellier, MotoShop 34, Chomat Motos Manosque, First On Track, for the loan of bikes and accessories. To Pole Mecanique d'Alès for the race track. To our amazing riders, both official and unofficial ;) To our lovely distributors, dealers and customers around the world. And to everyone who contributed to make this 2022 collection and catalog so great ;)

© FIVE ADVANCED GLOVES 2021



#fivegloves



PROTECTION / FITTING / DESIGN

WWW.FIVE-GLOVES.COM

